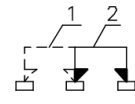
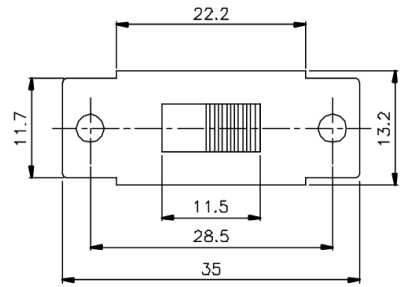
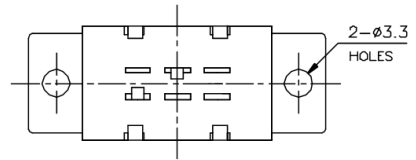
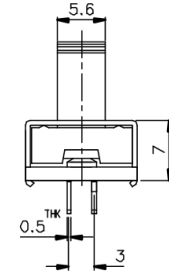
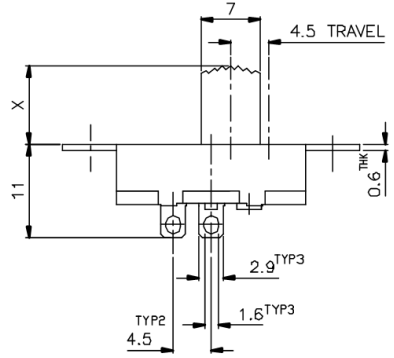


# KSD




NON-SHORTING  
SCHEMATIC



X =

MARKING:

SIDE A: **KSD** 科斯达  
AC 125V 4A  
SIDE B: U4 AC 250V 2A

ISSUED	SPECIFICATION (INITIAL)	TITLE: SLIDE SWITCH 1P2T	
	RATING: AC 125V 4A 250V 2A	MODEL NO:	U4SS-12J21-G
	CONTACT RESISTANCE: MAX. 30mΩ	UNIT: mm	DWN
	INSULATION RESISTANCE: 500MΩ at 500V DC	SCALE: 2 : 1	CHK'D
	WITHSTAND VOLTAGE: AC 1000V for 1 min	TOLERANCE: ±0.20	APPD.
	OPERATION FORCE: 300±100g		
	SWITCHING LIFE: 10000 Cycles(6-10c/m loading)		
BY:	 <b>广东科斯达电子科技有限公司</b> GUANG DONG KE SI DA ELECTRONIC TECHNOLOGY CO., LTD.	DRWG NO:	991052-01
DATE:			