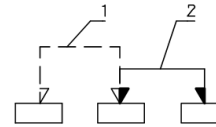
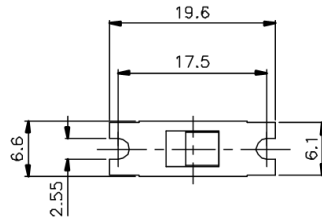
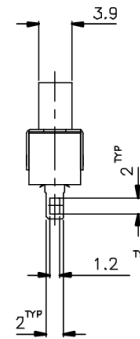
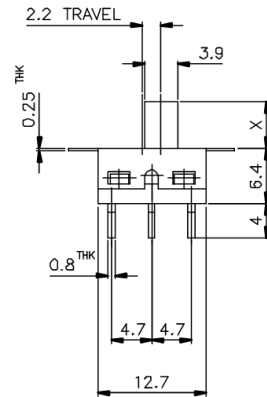



# KSD



NON-SHORTING SCHEMATIC



X=

ISSUED	SPECIFICATION (INITIAL)	TITLE:	SLIDE SWITCH 1P2T		
	RATING: AC 250V 1A	MODEL NO:	WS-12D01-G		
	CONTACT RESISTANCE: Not more than 30mΩ	UNIT:	m m	DWN	
	INSULATION RESISTANCE: 500MΩ at 500V DC	SCALE:	2 : 1	CHK'D	
	WITHSTAND VOLTAGE: AC 1000V for 1 min	TOLERANCE:	±0.2	APPD.	
	OPERATION FORCE: 250±100g				
	SWITCHING LIFE: 10,000 cycles (6-10c/m loading)				
BY:	 <b>广东科斯达电子科技有限公司</b> GUANG DONG KE SI DA ELECTRONIC TECHNOLOGY CO., LTD.	DRWG NO:	880329-00		
DATE:					