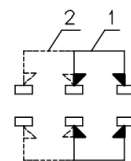
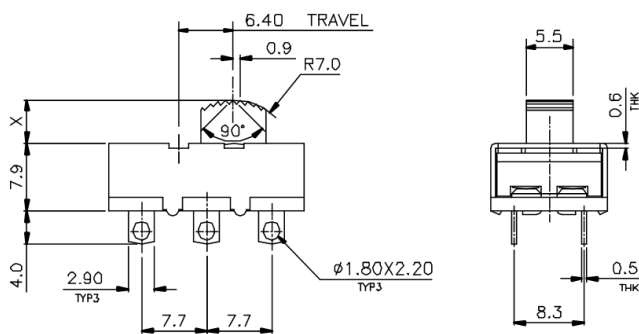
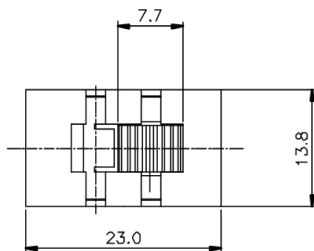


# KSD




NON-SHORTING  
SCHEMATIC



MARKING: SIDE A: **KSD** 司达

SIDE B: U4 AC 125V 11A  
AC 250V 5.5A

X =

ISSUED	SPECIFICATION (INITIAL)	TITLE: SLIDE SWITCH	2P2T
	RATING: 11A 125V AC 5.5A 250V AC	MODEL NO:	U11SS-22L20-G
	CONTACT RESISTANCE: MAX. 30mΩ	UNIT: m m	DWN
	INSULATION RESISTANCE: 500MΩ AT 500V DC	SCALE: 2 : 1	GHK'D
	WITHSTAND VOLTAGE: AC 1000V FOR 1 MIN	TOLERANCE: ±0.20	APPD.
	OPERATION FORCE: 400 ± 200g		
	SWITCHING LIFE: 10000 Cycles (6-10c/m loading)		
BY:	 <b>广东科斯达电子科技有限公司</b> GUANG DONG KE SI DA ELECTRONIC TECHNOLOGY CO., LTD.	DRWG NO:	A10272-00
DATE:			