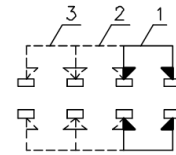
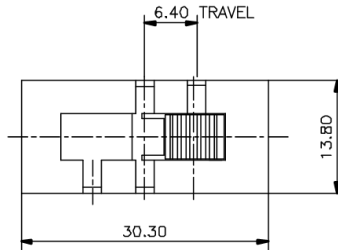
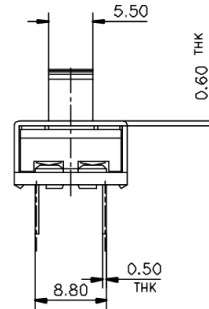
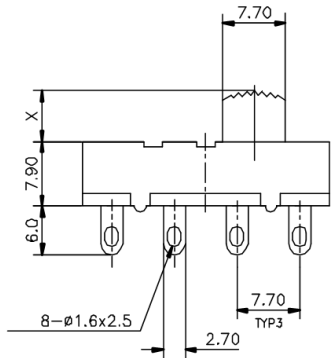


# KSD



NON-SHORTING  
SCHEMATIC



X=


MARKING:

SIDE A: **KSD** 23L04

AC 125V 11A

SIDE B: U11

AC 250V 5.5A

ISSUED	SPECIFICATION (INITIAL)	TITLE: SLIDE SWITCH 2P3T			
	RATING: 11A 125VAC 5.5A 250VAC	MODEL NO: U11SS-23L04-G			
	CONTACT RESISTANCE: MAX. 30mΩ	UNIT: m m	DWN		
	INSULATION RESISTANCE: 500MΩ AT 500V DC	SCALE: 2 : 1	CHK'D		
	WITHSTAND VOLTAGE: AC 1000V FOR 1 MIN	TOLERANCE: ±0.20	APPD.		
	OPERATION FORCE: 400±150g	DRWG NO: 990085-01			
	SWITCHING LIFE: 10000 Cycles (6-10c/m loading)				
BY:	 <b>广东科斯达电子科技有限公司</b> GUANG DONG KE SI DA ELECTRONIC TECHNOLOGY CO., LTD.				
DATE:					