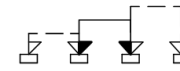
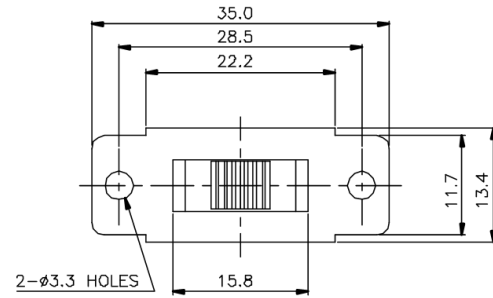
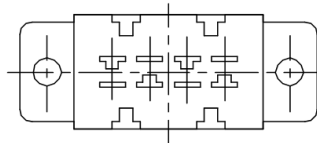
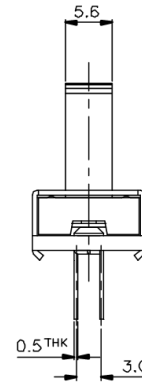
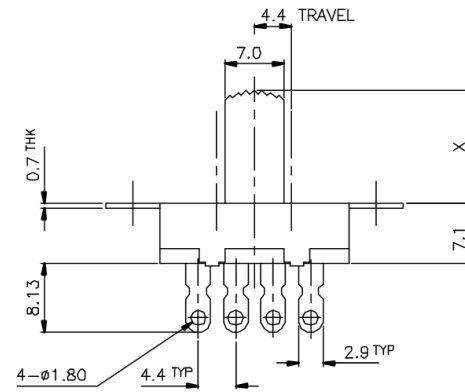


# KSD




NON-SHORTING  
SCHEMATIC



MARKING:

SIDE A: **KSD**  **1s**  
SIDE B: AC 125V 6A

X=

ISSUED	SPECIFICATION (INITIAL)	TITLE: SLIDE SWITCH 1P3T
	RATING: AC 125V 6A	MODEL NO: CLO2-SS13109-G
	CONTACT RESISTANCE: NOT MORE THAN 30mΩ	UNIT: m m DWN
	INSULATION RESISTANCE: 500MΩ AT 500V DC	SCALE: 2 : 1 CHK'D
	WITHSTAND VOLTAGE: AC 1000V FOR 1 MIN	TOLERANCE: ±0.20 APPD.
	OPERATION FORCE: 350±200g	
	SWITCHING LIFE: 10000 Cycles(6-10c/m loading)	
BY:	 <b>广东科斯达电子科技有限公司</b> GUANG DONG KE SI DA ELECTRONIC TECHNOLOGY CO., LTD.	DRWG NO:
DATE:		940336-01