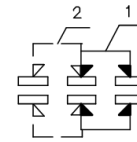
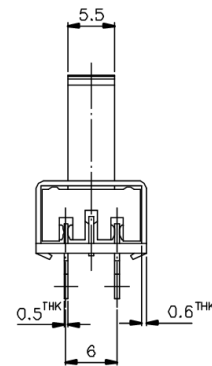
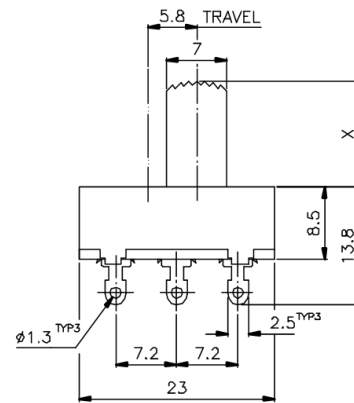
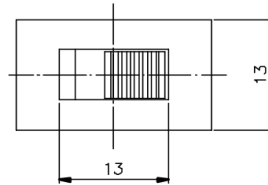


KSD



NON-SHORTING
SCHEMATIC



X=

ISSUED	SPECIFICATION (INITIAL)	TITLE: SLIDE SWITCH 2P2T	
	RATING: DC 12V 6A	MODEL NO:	WS-22L09-G
	CONTACT RESISTANCE: Not more than 30mΩ	UNIT:	mm DWN
	INSULATION RESISTANCE: 500MΩ at 500V DC	SCALE:	2 : 1 CHK'D
	WITHSTAND VOLTAGE: AC 500V for 1 min	TOLERANCE:	±0.4 APPD.
	OPERATION FORCE: 400±150g		
	SWITCHING LIFE:10000Cycles(6-10c/m loading)		
BY:	广东科斯达电子科技有限公司 GUANG DONG KE SI DA ELECTRONIC TECHNOLOGY CO., LTD.	DRWG NO:	930343-00
DATE:			