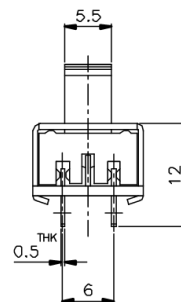
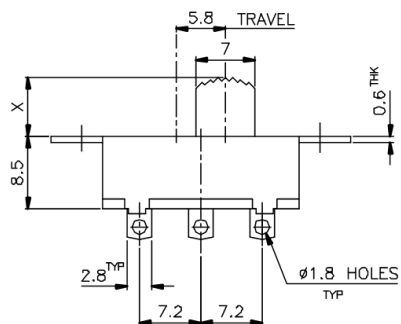
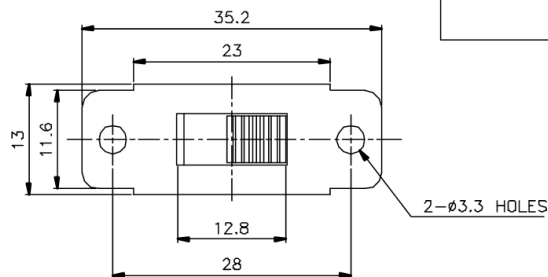
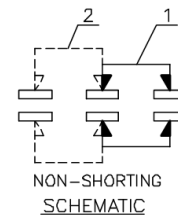


KSD



X=

| | | |
|--------|---|--------------------------|
| ISSUED | SPECIFICATION (INITIAL) | TITLE: SLIDE SWITCH 2P2T |
| | RATING: AC 125V 2A | MODEL NO: WS-22L07-G |
| | CONTACT RESISTANCE: Not more than 30mΩ | UNIT: mm DWN |
| | INSULATION RESISTANCE: 500MΩ at 500V DC | SCALE: 2 : 1 CHK'D |
| | WITHSTAND VOLTAGE: AC 1000V for 1 min | TOLERANCE: ±0.2 APPD. |
| | OPERATION FORCE: 450 ± 150g | |
| | SWITCHING LIFE: 10000cycles(6-10c/m loading) | |
| BY: | 广东科斯达电子科技有限公司 GUANG DONG KE SI DA ELECTRONIC TECHNOLOGY CO., LTD. | DRWG NO: |
| DATE: | | 890120-00 |