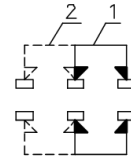
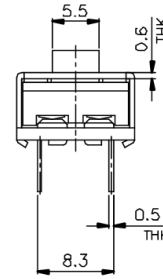
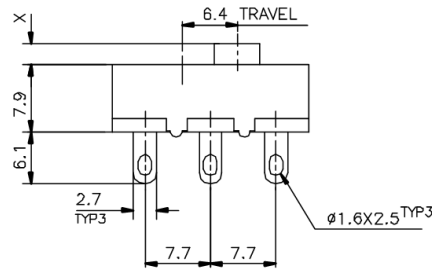
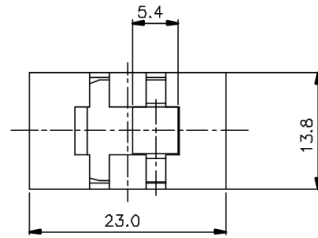


KSD




SCHEMATIC



MARKING: SIDE A: **KSD** 
 SIDE B: U13 AC 125V 13A
 AC 250V 6.5A

X=

ISSUED	SPECIFICATION (INITIAL)	TITLE: SLIDE SWITCH 2P2T
	RATING: 13A 125VAC 6.5A 250VAC	MODEL NO: U13SS-22L23-G(B)
	CONTACT RESISTANCE: MAX. 30mΩ	UNIT: m m DWN
	INSULATION RESISTANCE: 500MΩ AT 500V DC	SCALE: 2 : 1 CHK'D
	WITHSTAND VOLTAGE: AC 1000V FOR 1 MIN	TOLERANCE: ±0.20 APPD.
	OPERATION FORCE: 400±200g	
	SWITCHING LIFE: 10000 Cycles(6-10c/m loading)	
BY:	 广东科斯达电子科技有限公司	DRWG NO: 950402-02
DATE:	GUANG DONG KE SI DA ELECTRONIC TECHNOLOGY CO., LTD.	