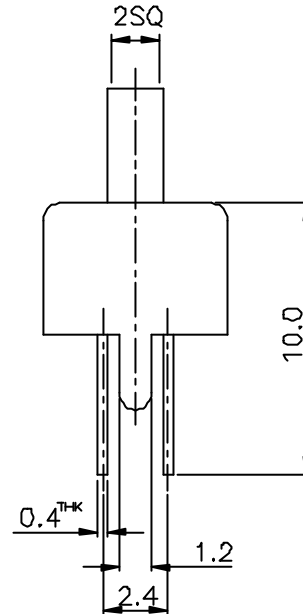
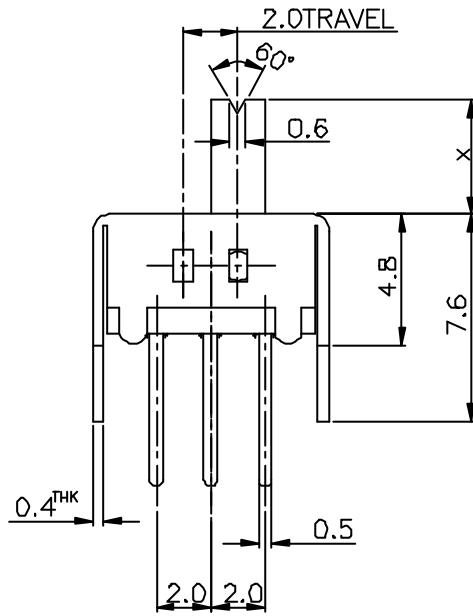
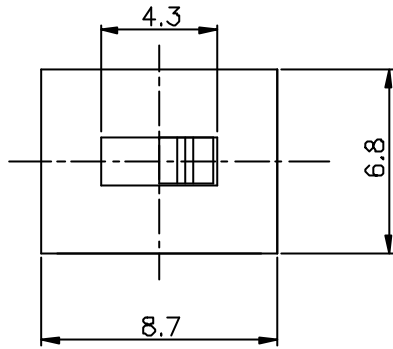



SCHEMATIC



X =

| | | | | | |
|--------|---|--------------------------|-------|-------|----------|
| ISSUED | SPECIFICATION (INITIAL) | TITLE: SLIDE SWITCH 2P2T | | | |
| | RATING: DC 50V 0.5A | MODEL NO: SS-22D02-G(F) | | | |
| | CONTACT RESISTANCE Not more than 30mΩ | UNIT: m m | DWN | Q F L | 15.05.06 |
| | INSULATION RESISTANCE: 500MΩ at 500V DC | SCALE: 4 . 1 | CHK'D | | |
| | WITHSTAND VOLTAGE: AC 500V for 1 min | TOLERANCE: ±0.20 | APPD. | | |
| | OPERATION FORCE: 300±200g | | | | |
| | SWITCHING LIFE: 10000 Cycles(6-10c/m loading) | | | | |
| BY: |  广东科斯达电子科技有限公司 GUANG DONG KE SI DA ELECTRONIC TECHNOLOGY CO., LTD. | DRWG NO: | | | |
| DATE: | | 880053-02 | | | |