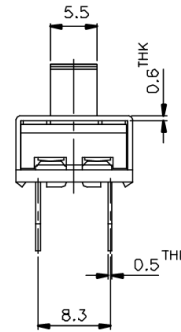
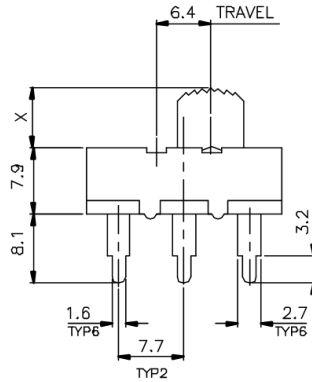
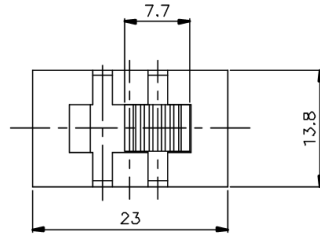
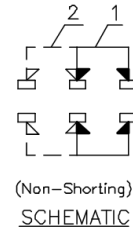


# KSD



MARKING:

SIDE A: **KSD** 科斯达

AC 125V 11A

X=

SIDE B: U11

AC 250V 5.5A

ISSUED	SPECIFICATION (INITIAL)	TITLE: SLIDE SWITCH	2P2T
	RATING: 11A 125VAC 5.5A 250VAC	MODEL NO:	U11S5-22L22-G
	CONTACT RESISTANCE: MAX. 30mΩ	UNIT: m m	DWN
	INSULATION RESISTANCE: 500MΩ AT 500V DC	SCALE: 2 : 1	CHK'D
	WITHSTAND VOLTAGE: AC 1000V FOR 1 MIN	TOLERANCE: ±0.20	APPD.
	OPERATION FORCE: 400±200g		
	SWITCHING LIFE: 10,000 Cycles (6-10c/m loading)		
BY:	<b>广东科斯达电子科技有限公司</b> GUANG DONG KE SI DA ELECTRONIC TECHNOLOGY CO., LTD.	DRWG NO:	
DATE:		950386-02	