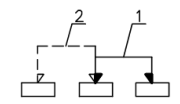
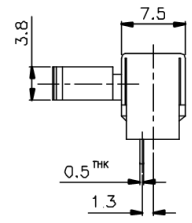
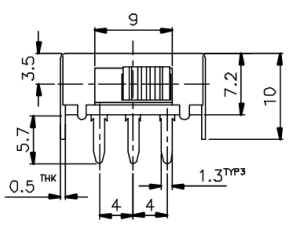
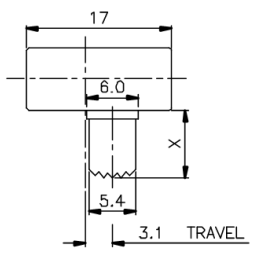



KSD



SCHEMATIC



X=

| | | | |
|--------|---|------------------------------------|-------------|
| ISSUED | SPECIFICATION (INITIAL) | TITLE: SIDE KNOB SLIDE SWITCH 1P2T | |
| | RATING: DC 50V 0.5A | MODEL NO: | SK-12F13-G |
| | CONTACT RESISTANCE: Not more than 30mΩ | UNIT: mm | DWN |
| | INSULATION RESISTANCE: 500MΩ at 500V DC | SCALE: 2 : 1 | CHK'D |
| | WITHSTAND VOLTAGE: AC 500V FOR 1 MIN | TOLERANCE: ±0.2 | APPD. |
| | OPERATION FORCE: 300±150g | | |
| | SWITCHING LIFE: 10000cycles(6-10c/m loading) | | |
| BY: |  广东科斯达电子科技有限公司 GUANG DONG KE SI DA ELECTRONIC TECHNOLOGY CO., LTD. | DRWG NO: | B 801104-00 |
| DATE: | | | |