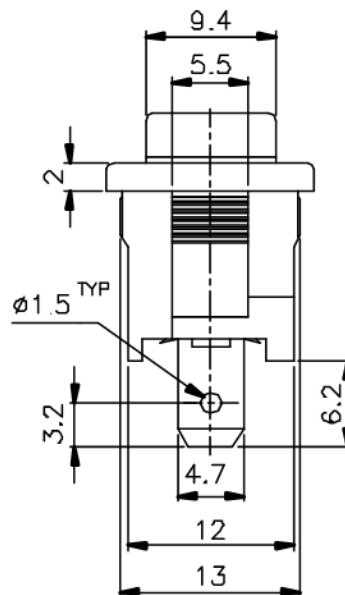
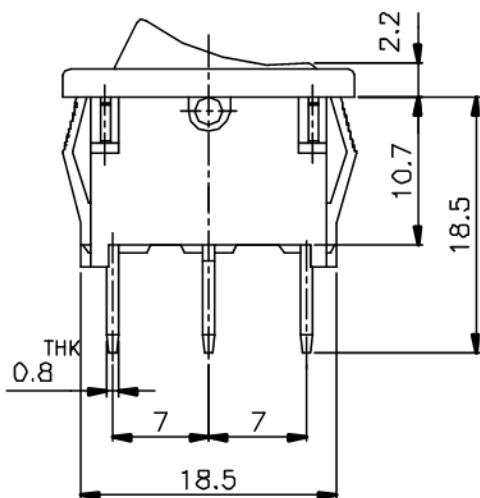
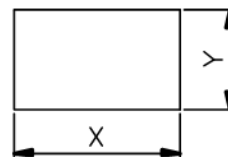



NON-SHORTING
SCHEMATIC



Panel Cut-out Dimensions




Rating : UL: U11  11A 125VAC
5.5A 250VAC

VDE: U11E4   4A 250V~

Remark : Tab Terminal Not For Soldering

Panel Thickness (mm/inch)	DIM X ^{+0.1} (mm/inch)	DIM Y ^{+0.1} (mm/inch)
0.5~1.2 (.02~.047)	19.4 (.764)	13.1 (.518)
1.2~2.0 (.047~.08)	19.7 (.775)	
2.0~3.0 (.08~.118)	20.0 (.787)	

ISSUED	SPECIFICATION (INITIAL)	TITLE: ROCKER SWITCH 1P2T			
	RATING: AC 125V 11A ; AC 250V 5.5A	MODEL NO: U11WR-12N01-R1(00)-00			
	CONTACT RESISTANCE: MAX. 30mΩ	UNIT: mm	DWN		
	INSULATION RESISTANCE: 500MΩ at 500V DC	SCALE: 2 : 1	CHK'D		
	WITHSTAND VOLTAGE: AC 1000V for 1 min	TOLERANCE: ±0.2	APPD.		
	OPERATION FORCE: 450±250g	 广东科斯达电子科技有限公司 GUANG DONG KE SI DA ELECTRONIC TECHNOLOGY CO., LTD.			
	SWITCHING LIFE: 10,000 Cycles(6-10c/m loading)				
BY:		DRWG NO: 980542-02			
DATE:					