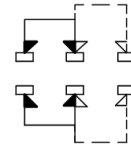
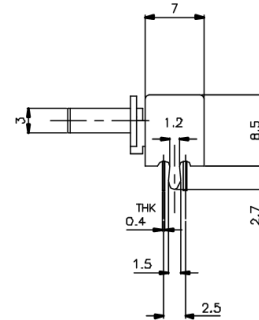
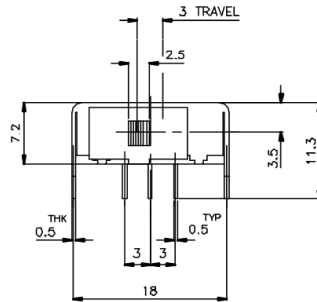
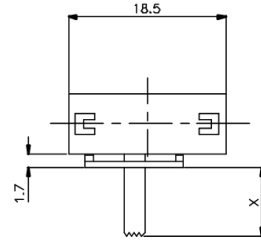



**KSD**



SCHEMATIC



X=

|        |   |                          |                |
|--------|---|--------------------------|----------------|
| ISSUED | SPECIFICATION (INITIAL)   | TITLE: SLIDE SWITCH 2P2T |                |
|        | RATING: DC 50V 0.5A   | MODEL NO:                | SK-22F18-G(A6) |
|        | CONTACT RESISTANCE: Not more than 30mΩ  | UNIT: mm                 | DWN            |
|        | INSULATION RESISTANCE: 500MΩ at 500V DC   | SCALE: 2 : 1             | CHK'D          |
|        | WITHSTAND VOLTAGE: AC 500V for 1 min  | TOLERANCE: ±0.20         | APPD.          |
|        | OPERATION FORCE: 300±200g   |                          |                |
|        | SWITCHING LIFE: 10K Cycles(6-10c/m loading)   |                          |                |
| BY:    |  <b>广东科斯达电子科技有限公司</b><br>GUANG DONG KE SI DA ELECTRONIC TECHNOLOGY CO., LTD. | DRWG NO:                 | 940012-02      |
| DATE:  |   |                          |                |