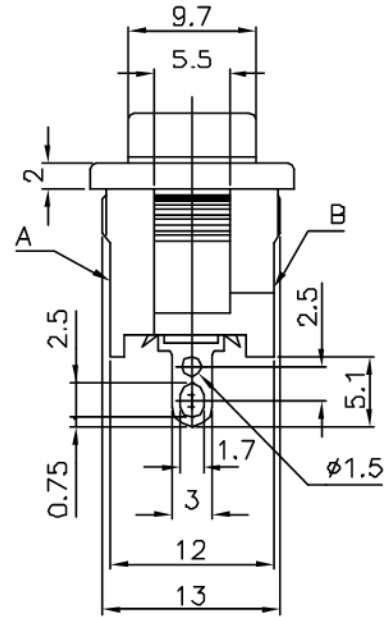
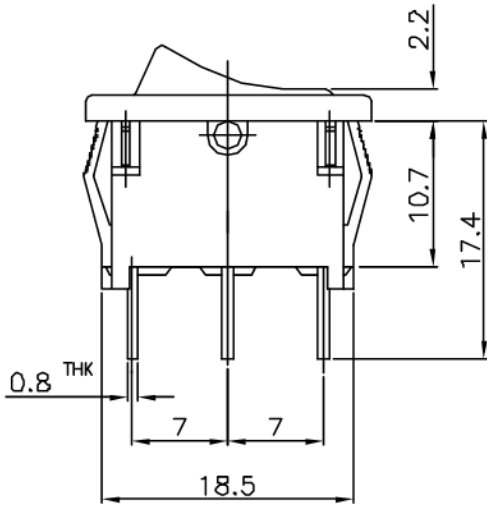
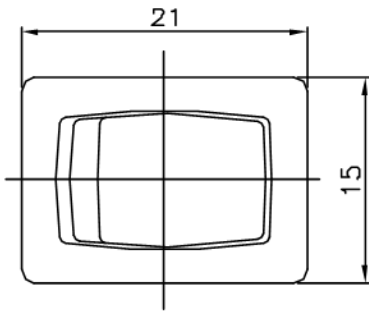
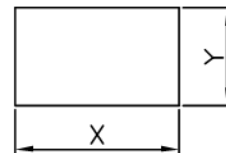


(Non-shorting)  
SCHEMATIC



Panel Cut-out Dimensions



SIDE A : **KSD**  
U11 11A 125VAC  
5.5A 250VAC  
3 2 1

SIDE B :   
U11E4  
4A 250V~

REMARK:

Knob And Shell Colour Are White

Panel Thickness (mm/Inch)	DIM X <sup>+0</sup> <sub>-0.1</sub> (mm/Inch)	DIM Y <sup>+0.1</sup> (mm/Inch)
0.5~1.2 (.02~.05)	19.4 (.764)	13.1 (.516)
1.2~2.0 (.05~.08)	19.7 (.775)	
2.0~3.0 (.08~.12)	20.0 (.787)	

ISSUED	SPECIFICATION (INITIAL)	TITLE:	ROCKER SWITCH 1P2T		
	RATING: AC 125V 11A ; AC 250V 5.5A	MODEL NO:	U11WR-12N02-R1(00)W-W-00		
	CONTACT RESISTANCE: MAX. 30mΩ	UNIT:	mm	DWN	LIU
	INSULATION RESISTANCE: 500MΩ at 500V DC	SCALE:	2 : 1	CHK'D	
	WITHSTAND VOLTAGE: AC 1000V for 1 min	TOLERANCE:	±0.2	APPD.	
	OPERATION FORCE: 450±250g				
	SWITCHING LIFE: 10,000 Cycles(6-10c/m loading)				
BY:	<b>广东科斯达电子科技有限公司</b> GUANG DONG KE SI DA ELECTRONIC TECHNOLOGY CO., LTD.	DRWG NO:	A60557-00		
DATE:					