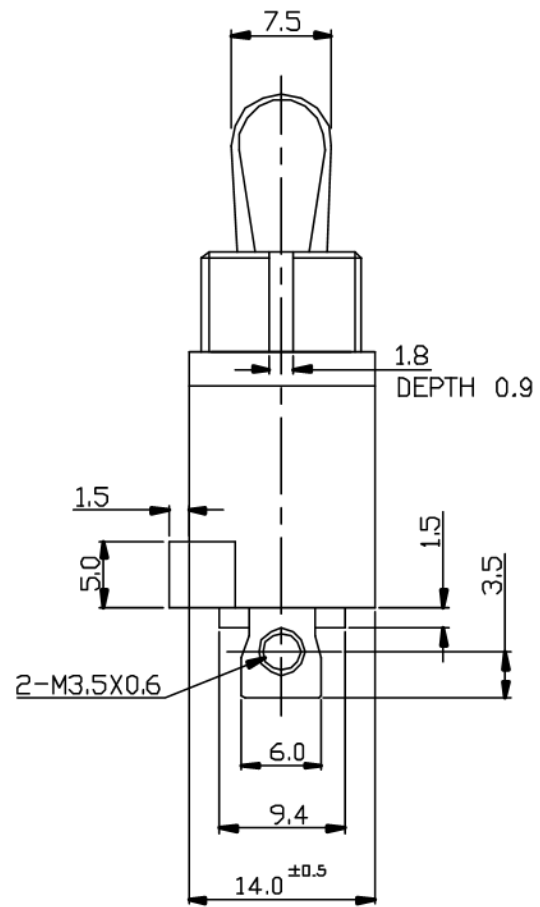
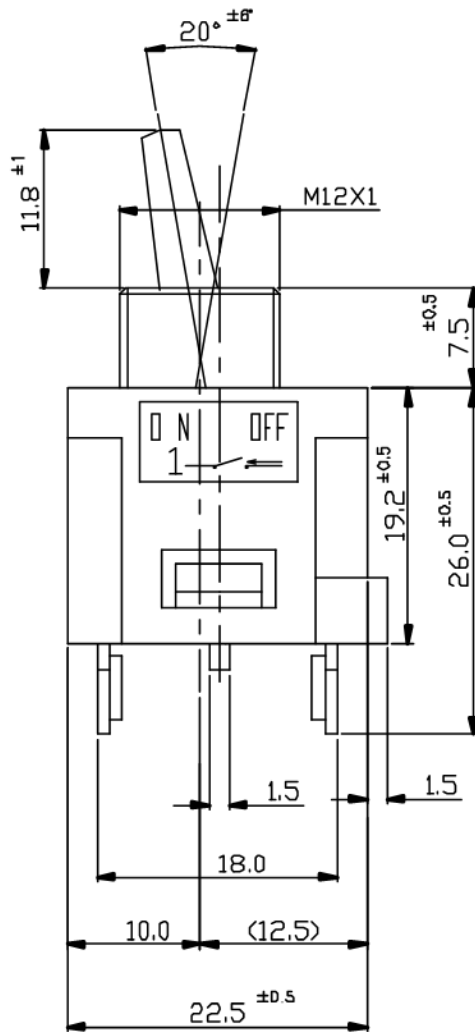



SCHEMATIC



ISSUED	SPECIFICATION (INITIAL)	TITLE: TOGGLE SWITCH 1P1T		
	RATING: 6A 125V AC	MODEL NO: STL106AT		
	CONTACT RESISTANCE: Not more than 30mΩ	UNIT: m m	DWN	
	INSULATION RESISTANCE: 100MΩ at 500V DC	SCALE: 2 : 1	CHK'D	
	WITHSTAND VOLTAGE: AC 2000V for 1 min	TOLERANCE: ±0.20	APPD.	
	OPERATION FORCE: 600g ~ 1000g			
	SWITCHING LIFE: 50,000 Cycles(6~10c/m loading)			
BY:	 广东科斯达电子科技有限公司 GUANG DONG KE SI DA ELECTRONIC TECHNOLOGY CO., LTD.			
DATE:				