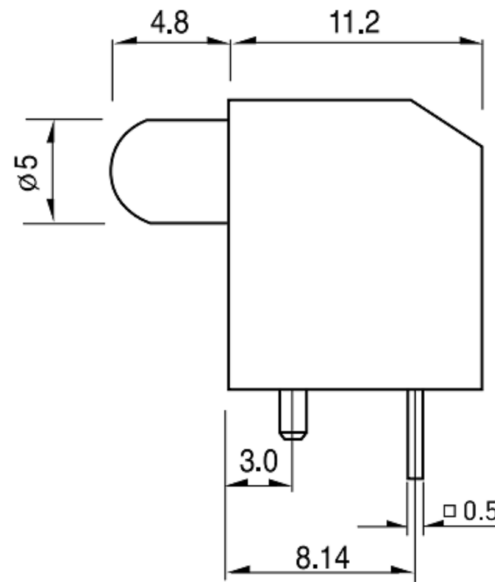
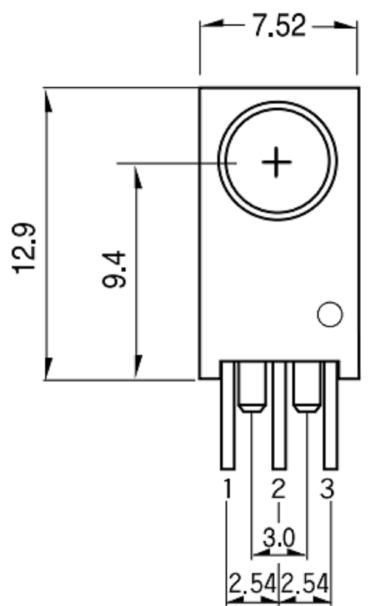
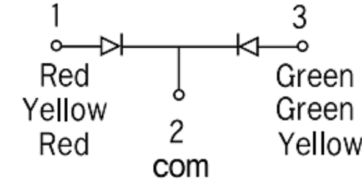


| MODEL | SEQ-5510 | SEQ-5610 | SEQ-5710 |
|-----------|-------------|----------------|--------------|
| LED Color | Red / Green | Yellow / Green | Red / Yellow |
| LED Spec | BL-BEG204 | BL-BYG204 | BL-BEY204 |



P.C.B DIMENSION



| Package | LED TYPE | Part No. | Chip | Emitted Color | Peak Wavelength (nm) | Lens | Absolute Maximum Ratings | | | Electro-optical Data(AI 20mA) | | | Viewing Angle 2θ 1/2° (99°) | |
|-----------------------------------|-------------|--------------|---------------|---------------|----------------------|-----------------|--------------------------|---------|---------|-------------------------------|--------------|--------------|-----------------------------|----|
| | | | | | | | ΔI (mA) | Pd (mW) | If (mA) | Vf(V) | Iv Typ. (mA) | Iv Max. (mA) | | |
| High Efficiency | 01 | BL-B2141K | Green | 568 | Green Diffused | 30 | 100 | 30 | 150 | 2.2 | 2.6 | 30.0 | 50 | |
| | | BL-B3141K | Yellow | 585 | Yellow Diffused | 35 | 100 | 30 | 150 | 2.1 | 2.6 | 20.0 | 50 | |
| | | BL-BA1141K | Amber | 610 | Amber Diffused | 35 | 100 | 30 | 150 | 2.0 | 2.6 | 60.0 | 50 | |
| | | BL-B5141K | Bright Red | 700 | Red Diffused | 90 | 50 | 15 | 50 | 2.2 | 2.6 | 10.0 | 50 | |
| | | BL-BB41V1E | Super Blue | 470 | Blue Diffused | 30 | 100 | 30 | 100 | 3.5 | 4.0 | 550 | 45 | |
| | | BL-B5141K-L | Hi-Eff Red | 635 | Red Diffused | 45 | 15 | 7 | - | 1.7 | 2.2 | 4.5 | 50 | |
| | | BL-B2141K-L | Green | 568 | Green Diffused | 30 | 16 | 7 | - | 1.9 | 2.3 | 7.0 | 50 | |
| | Low Current | 02 | BL-B3141K-L | Yellow | 585 | Yellow Diffused | 35 | 15 | 7 | - | 1.8 | 2.2 | 3.5 | 50 |
| | | | BR-B4541K-GSV | Hi-Eff Red | 635 | Red Diffused | - | - | 8 | - | 5 | - | 15.5 | - |
| | | | BR-B2141K-GSV | Green | 568 | Green Diffused | - | - | 8 | - | 5 | - | 15.5 | - |
| | | | BR-B3141K-GSV | Yellow | 585 | Yellow Diffused | - | - | 8 | - | 5 | - | 14.0 | - |
| | | | BR-B4141K-GSV | Orange | 635 | Orange Diffused | - | - | 8 | - | 5 | - | 15.5 | - |
| | | | BL-BEX271E | Hi-Eff Red | 635 | White Diffused | 45 | 100 | 30 | 150 | 2.0 | 2.6 | 25.0 | 45 |
| | | | BL-BYX271E | Green | 568 | White Diffused | 30 | 100 | 30 | 150 | 2.2 | 2.6 | 30.0 | 45 |
| Bi-color | 07 | BL-BYX271E | Yellow | 585 | White Diffused | 35 | 100 | 30 | 150 | 2.1 | 2.6 | 20.0 | 45 | |
| | | BL-BYX271E | Green | 568 | White Diffused | 30 | 100 | 30 | 150 | 2.2 | 2.6 | 30.0 | 45 | |
| | | BL-B5133N | Bright Red | 700 | Red Diffused | 90 | 50 | 15 | 50 | 2.2 | 2.6 | 50.0 | 40 | |
| | | BL-B2133N | Green | 568 | Green Diffused | 30 | 100 | 30 | 150 | 2.2 | 2.6 | 65.0 | 40 | |
| | | BL-B3133N | Yellow | 585 | Yellow Diffused | 35 | 100 | 30 | 150 | 2.1 | 2.6 | 60.0 | 40 | |
| | | BL-B5134N | Bright Red | 700 | Red Diffused | 90 | 50 | 15 | 50 | 2.2 | 2.6 | 13.0 | 45 | |
| | | BL-B2134N | Green | 568 | Green Diffused | 30 | 100 | 30 | 150 | 2.2 | 2.6 | 90.0 | 45 | |
| T-1 3/4 1.0" Lead Flangeless 5ø | 01 | BL-B3134N | Yellow | 585 | Yellow Diffused | 35 | 100 | 30 | 150 | 2.1 | 2.6 | 70.0 | 45 | |
| | | BL-BB41R4N | Super Blue | 470 | Blue Diffused | 30 | 100 | 30 | 100 | 3.5 | 4.0 | 550 | 45 | |
| | | BL-BEG274N | Hi-Eff Red | 635 | White Diffused | 45 | 100 | 30 | 150 | 2.0 | 2.6 | 45.0 | 45 | |
| | | BL-BEG274N | Green | 568 | White Diffused | 30 | 100 | 30 | 150 | 2.2 | 2.6 | 50.0 | 45 | |
| | | BL-BYX274N | Yellow | 585 | White Diffused | 35 | 100 | 30 | 150 | 2.1 | 2.6 | 35.0 | 45 | |
| | | BL-BYX274N | Green | 568 | White Diffused | 30 | 100 | 30 | 150 | 2.2 | 2.6 | 50.0 | 45 | |
| | | BL-BYX274N | White | 568 | White Diffused | 30 | 100 | 30 | 150 | 2.2 | 2.6 | 50.0 | 45 | |
| T-1 3/4 1.0" Lead Standard 5ø | 07 | BL-BEG204 | Hi-Eff Red | 635 | White Diffused | 45 | 100 | 30 | 150 | 2.0 | 2.6 | 35.0 | 40 | |
| | | BL-BEG204 | Green | 568 | White Diffused | 30 | 100 | 30 | 150 | 2.2 | 2.6 | 45.0 | 40 | |
| | | BL-BYX204 | Yellow | 585 | White Diffused | 35 | 100 | 30 | 150 | 2.1 | 2.6 | 30.0 | 40 | |
| 2.0x5.0x7.0 1.0" Lead Rectangular | | BL-BYX204 | Green | 568 | White Diffused | 30 | 100 | 30 | 150 | 2.2 | 2.6 | 45.0 | 40 | |
| | | BL-RVT302B-R | Hi-Eff Red | 635 | Water Clear | 45 | 100 | 30 | 150 | 2.0 | 2.6 | 4.0 | 80 | |
| | | | Green | 568 | Water Clear | 30 | 100 | 30 | 150 | 2.2 | 2.6 | 4.5 | 80 | |

广东科斯达电子科技有限公司
GUANG DONG KE SI DA ELECTRONIC TECHNOLOGY CO., LTD.

TOLERANCE UNLESS OTHERWISE STATED:
 Up to 5 ±0.2
 Above 5 ~ 15 ±0.3
 Above 15 ~ 30 ±0.4
 Above 30 ~ 50 ±0.5
 Angle ±0.3

3RD. ANGEL'S



UNITS MM

DRAWN BY: Jack Lu DATE: 12/27/22
 CHECKED BY: Jacky Chen DATE: 12/27/22
 APPROVED BY: Tony Kao DATE: 12/27/22

| | | | |
|-----------|--------|----------|----------|
| MAT'L | | TITLE | SWITCH |
| FINISH | | MODLE | SWITCH |
| SCALE | 1 : 1 | DWG NO. | SEQ-5X10 |
| SHEET NO. | 1 of 1 | PART NO. | |
| | | SIZE | A4 |
| | | VER | R |

| ITEM NO. | DESCRIPTION | DRAWN | DATE |
|----------|-------------|-------|------|
| | | | |
| | | | |
| | | | |