

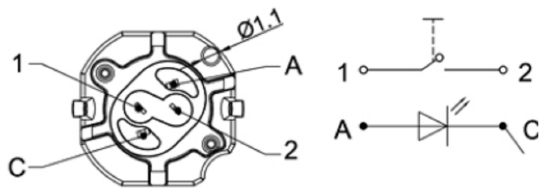
**SPECIFICATIONS**

Circuit  
 Current rating  
 Voltage rating  
 Dielectric withstanding voltage  
 Contact resistance  
 Insulation resistance  
 Operating force  
 Total travel  
 Operating life:  
 Bounce time:  
 Operating speed 100 mm/s(3.94/s)  
 Solder specifications  
 Operating temperature  
 Protection class

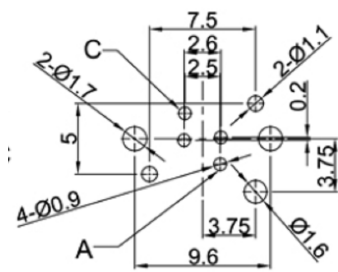
:SPST  
 :10mA min./100mA max.  
 :2V DC min./30V DC max.  
 :500VAC for 1 minute  
 :50m $\Omega$  Max. (Initial)  
 :100M $\Omega$  Min.  
 :600 $\pm$ 100gf  
 :1.5 $\pm$ 0.4mm  
 :1,000,000 cycles Min  
 : $\leq$  1ms

MATERIAL:  
 Base : PA+GF,UL rated:94 V-2 Min;  
 Cap: POM ;  
 Terminal: Brass,Silver plated;

**CIRCUIT**



**P.C.B. LAYOUT**



LED SPECIFICATIONS					
G1	Bright Green 翠绿色	2.8	--	3.4	20 100
W	White 白色	2.8	--	3.4	20 100
U	Blue 蓝色	2.8	--	3.4	20 100
Y	Yellow 黄色	1.8	--	2.4	20 100
G	Green 黄绿色	1.8	--	2.4	20 100
R	Red 红色	1.8	--	2.4	20 100
灯发光颜色(X)		最小	一般	最大	最大脉冲
Emitted Color (X)		顺向电压(V)	(mA)	(mA)	(mA)

**广东科斯达电子科技有限公司**  
 GUANG DONG KE SI DA ELECTRONIC TECHNOLOGY CO., LTD.

TOLERANCE UNLESS OTHERWISE STATED:  
 Up to 5  $\pm 0.2$   
 Above 5 - 15  $\pm 0.3$   
 Above 15 - 30  $\pm 0.4$   
 Above 30 - 50  $\pm 0.5$   
 Angle  $\pm 0.3$

3RD. ANGEL'S

UNITS MM

DRAWN BY:	DATE	MAT'L	TITLE	SWITCH
Jack Lu	12/27/22	FINISH	MODLE	TACT SWITCH WITH LED
CHECKED BY:	DATE	SCALE	DWG NO.	SIZE
Jacky Chen	12/27/22	1 : 1		A4
APPROVED BY:	DATE	SHEET NO.	PART NO.	VER
Tony Kao	12/27/22	1 of 1		R

ITEM NO.	DESCRIPTION	DRAWN	DATE