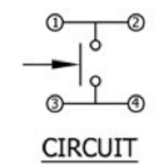
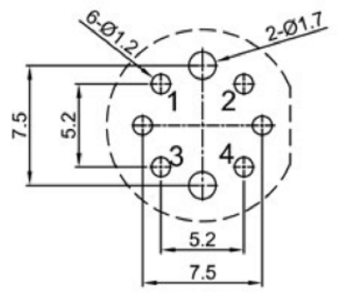
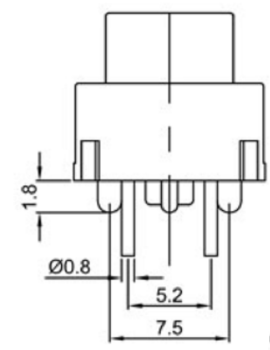


Specifications
 Circuit :SPST
 Current rating :30mA
 Voltage rating :30VDC
 Dielectric withstanding voltage :500VAC for 1 minute
 Contact resistance :30m Ω Max. (Initial)
 Insulation resistance :100M Ω Min
 Operating force :300 \pm 50gf
 Total travel :0.7mm \pm 0.2mm
 Operating life :100,000 cycles Min.
 Solder specifications :260 \pm 5 $^{\circ}$ C for 5 seconds
 Operating temperature :-20 $^{\circ}$ C ~ +60 $^{\circ}$ C
 Welding method :Manual Soldering
 (350 $^{\circ}$ C \pm 5 $^{\circ}$ C, 3s \pm 0.5s)



Y	Yellow	黄色
W	White	白色
U	Blue	蓝色
R	Red	红色
O	Orange	橙色
G	Green	绿色
B	Black	黑色
A	Gray	灰色
CAP COLOR (X)		

P.C.B.LAYOUT

广东科斯达电子科技有限公司
 GUANG DONG KE SI DA ELECTRONIC TECHNOLOGY CO., LTD.

TOLERANCE UNLESS OTHERWISE STATED:
 Up to 5 ± 0.2
 Above 5 ~ 15 ± 0.3
 Above 15 ~ 30 ± 0.4
 Above 30 ~ 50 ± 0.5
 Angle ± 0.3

3RD. ANGEL'S

UNITS MM

DRAWN BY:	DATE	MAT'L	TITLE	SWITCH
Jack Lu	12/27/22			
CHECKED BY:	DATE	FINISH	MODLE	TACT SWITCH WITH LED
Jacky Chen	12/27/22			
APPROVED BY:	DATE	SCALE	DWG NO.	SIZE
Tony Kao	12/27/22	1 : 1		A4
		SHEET NO.	PART NO.	VER
		1 of 1		R

ITEM NO.	DESCRIPTION	DRAWN	DATE