

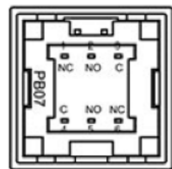
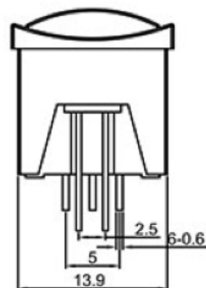
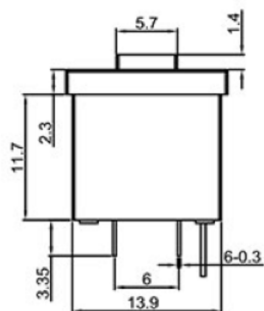
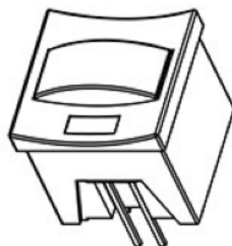
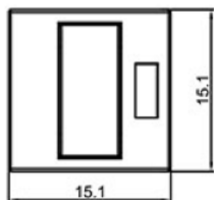
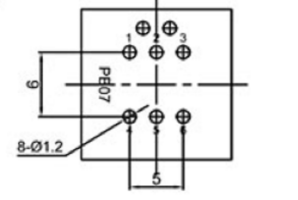
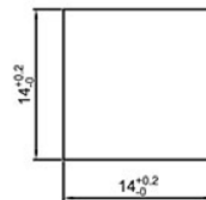
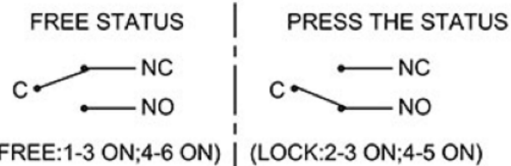


Rating: 100mA 30VDC ;  
 Contact Resistance: 100mΩ Max. ;  
 Insulation Resistance:DC 500V 100MΩ Min. ;  
 Dielectric Strength:AC 250V 1 minute  
 Total Travel: 2.5±0.5mm  
 Operating Force:200±100gf  
 Mechanical Life: Over 50,000 cycles  
 Electrical Life: Over 10,000 cycles  
 Operating Temperature:-20°C~70°C  
 Manual welding:350°C for 3 Seconds

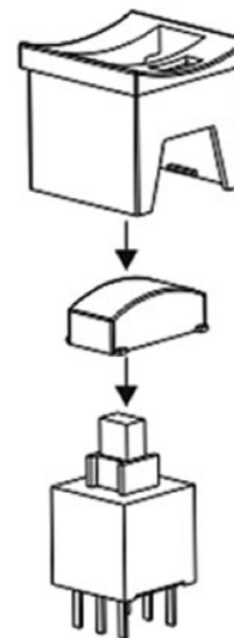
**MATERIAL:**

Outer Frame:ABS;  
 Base:ABS ;  
 Actuator:ABS  
 Terminal: Brass,Silver or Tin plated .

**Contact Configuration**



**BOTTOM VIEW**




**广东科斯达电子科技有限公司**  
 GUANG DONG KE SI DA ELECTRONIC TECHNOLOGY CO., LTD.

TOLERANCE UNLESS OTHERWISE STATED:  
 Up to 5 ±0.2  
 Above 5 ~ 15 ±0.3  
 Above 15 ~ 30 ±0.4  
 Above 30 ~ 50 ±0.5  
 Angle ±0.3



UNITS MM

DRAWN BY:	DATE	MAT'L	TITLE	SWITCH
Jack Lu	12/27/22			
CHECKED BY:	DATE	FINISH	MODLE	TACT SWITCH WITH LED
Jacky Chen	12/27/22			
APPROVED BY:	DATE	SCALE	DWG NO.	
Tony Kao	12/27/22	1 : 1		
		SHEET NO.	PART NO.	
		1 of 1		

SIZE	A4
VER	R

ITEM NO.	DESCRIPTION	DRAWN	DATE