

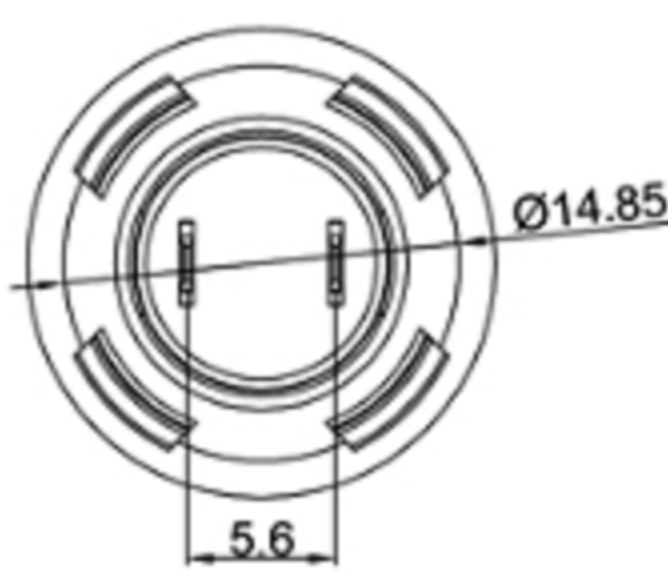
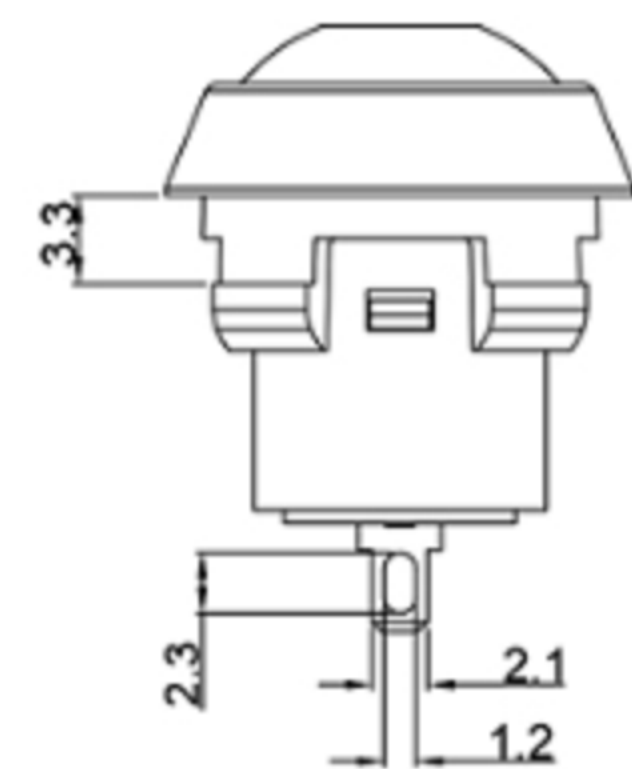
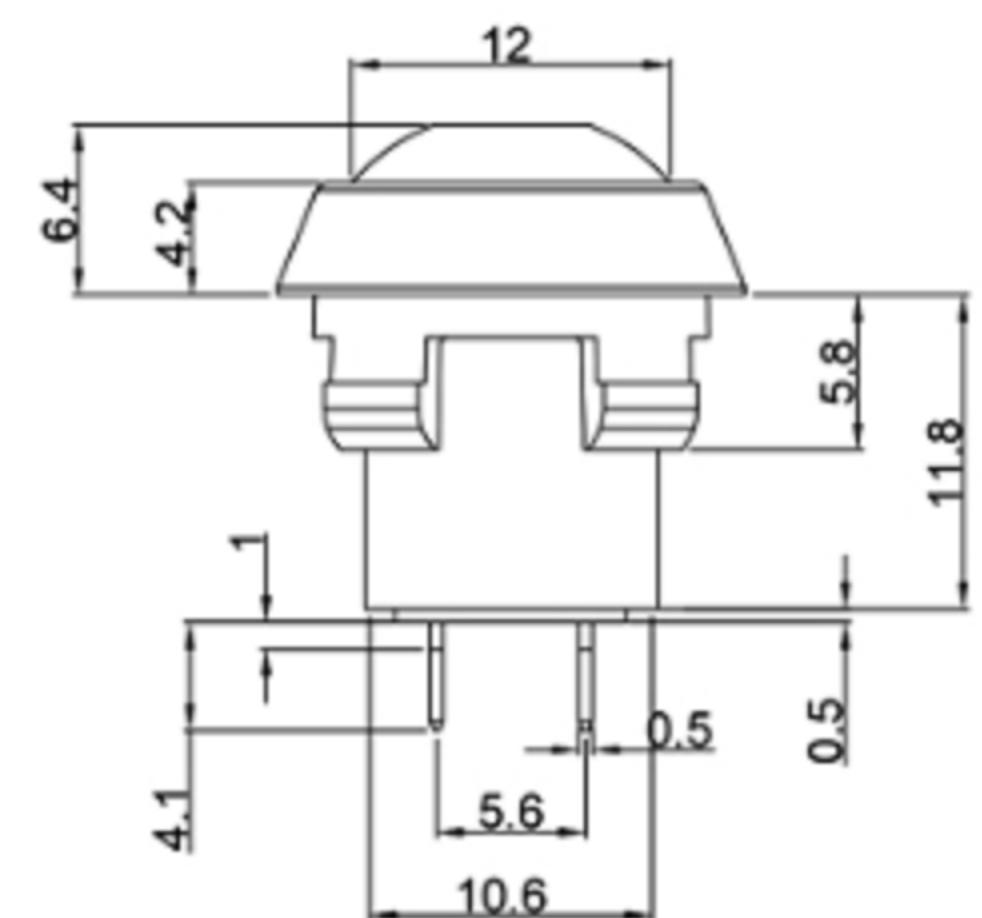


SPECIFICATIONS

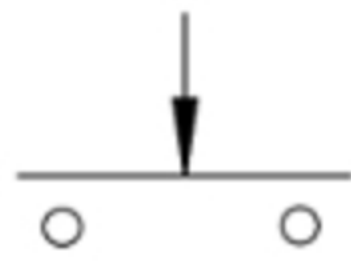
Circuit	:SPST
Current rating	:0.2A
Voltage rating	:250VAC
Dielectric withstanding voltage	:1000VAC for 1 minute
Contact resistance	:50mΩ Max
Insulation resistance	:100MΩ Min
Travel	:2.0mm±0.5mm
Operating Force	:500±150gf
Mechanical Life	:Over 500,000 cycles
Electrical Life	:Over 50,000 cycles
Manual Welding	:350°C for 3 seconds
Function	:Momentary
Operating temperature	: -40°C ~ +85°C
Level of protection	: IP67

MATERIAL:

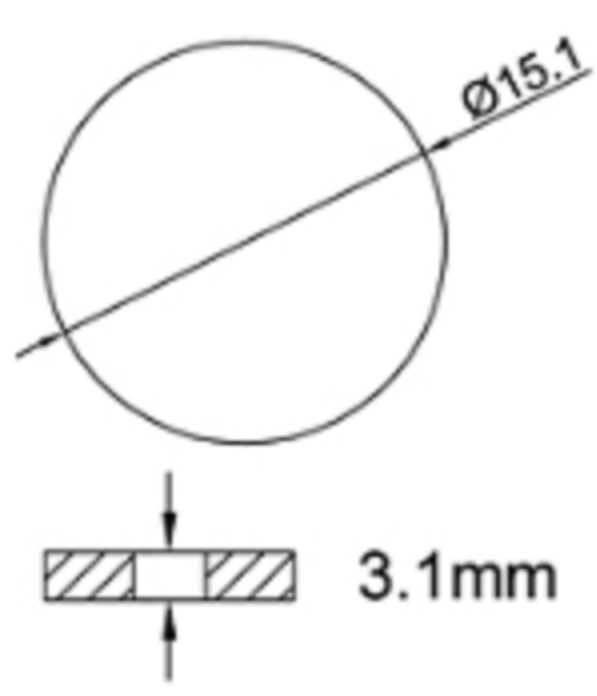
Base: PA66,UL rated:94V-2 Min;
 Cap: PA66 ;
 Terminal: Copper,Silver plated ;



Circuit Diagram



PANEL MOUNTING



B	Black 黑色
W	White 白色
U	Blue 蓝色
G	Green 绿色
R	Red 红色
上盖颜色 X	
Cap color X	

广东科斯达电子科技有限公司
GUANG DONG KE SI DA ELECTRONIC TECHNOLOGY CO., LTD.

TOLERANCE UNLESS OTHERWISE STATED:	Up to 5 ±0.2	3RD. ANGEL'S	UNITS	MM
	Above 5 ~ 15 ±0.3			
	Above 15 ~ 30 ±0.4			
	Above 30 ~ 50 ±0.5			
	Angle ±0.3			

DRAWN BY:	DATE	MAT'L	TITLE	SWITCH
Jack Lu	12/27/22		MODLE	TACT SWITCH WITH LED
CHECKED BY:	DATE	FINISH	DWG NO.	SIZE
Jacky Chen	12/27/22			A4
APPROVED BY:	DATE	SCALE	PART NO.	VER
Tony Kao	12/27/22	1 : 1		R
		SHEET NO.		
		1 of 1		

ITEM NO.	DESCRIPTION	DRAWN	DATE