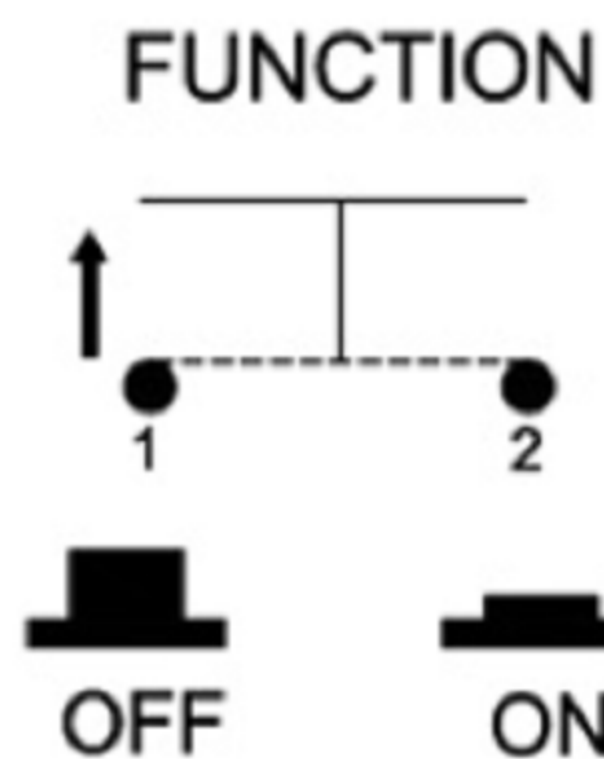
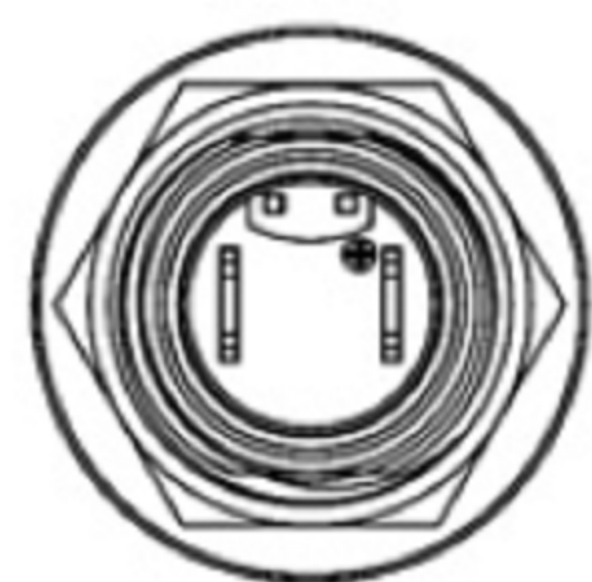


SPECIFICATIONS

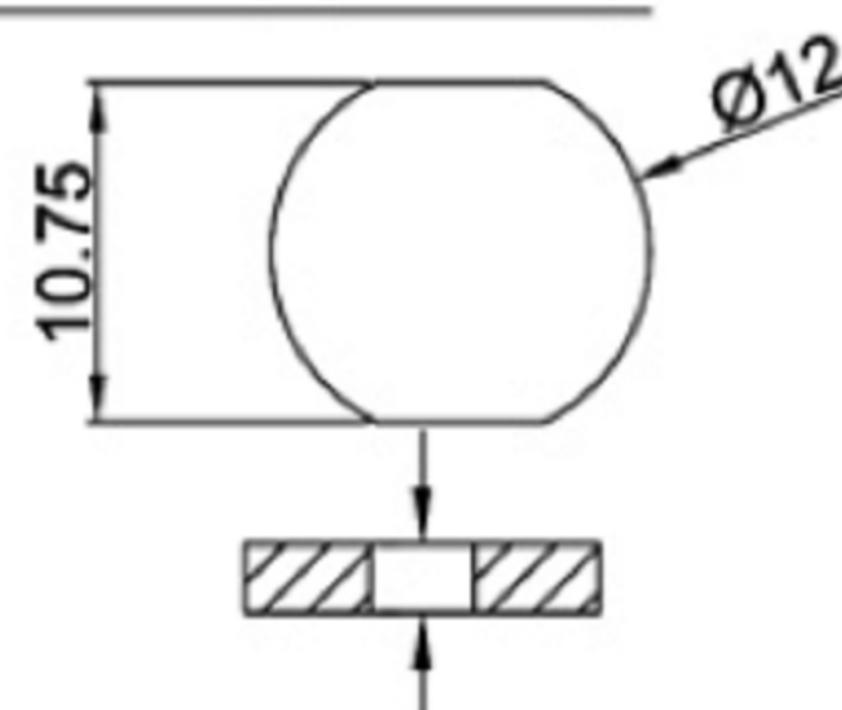
Circuit	:SPST
Current rating	:0.1A / 2A
Voltage rating	:24VDC/125VAC
Dielectric withstanding voltage	:1000VAC for 1 minute
Contact resistance	:50mΩ Max
Insulation resistance	:100MΩMin
Travel	:2.5mm±0.5mm
Operating Force	:400±50gf
Mechanical Life	:Over 100,000 cycles
Electrical Life	:Over 10,000 cycles
Manual Welding	:350°C for 3 seconds
Function	:OFF- (ON)
Operating temperature	:-20°C ~ +70°C
Level of protection	:IP67

MATERIAL:

Base: PA66,UL rated:94V-2 Min;
 Cap: ABS;
 Terminal: Copper,Golden plated ;
 Nut: Brass, NI Plated .



PANEL MOUNTING



Recommended Panel Thickness:
2.5mm~4.0mm

LED SPECIFICATIONS

U(sv)	Blue 蓝色	5.0	6.0	7.0	25	100		
G(sv)	Green 绿色	5.0	6.0	7.0	25	100		
R(sv)	Red 红色	5.0	6.0	7.0	25	100		
B	Black 黑色	U	Blue 蓝色	2.9	3.0	3.4	20	100
W	White 白色	Y	Yellow 黄色	1.9	2.2	2.4	20	100
U	Blue 蓝色	G	Green 绿色	1.8	2.2	2.4	20	100
G	Green 绿色	R	Red 红色	1.9	2.2	2.4	20	100
R	Red 红色	W	White 白色	2.9	3.2	3.5	30	100
Cap Color (X) 上盖颜色 (X)	Clip emitted color (Y) 灯的发光颜色 (Y)	最小	一般	最大	最大操作电流 (mA)	最大脉冲电流 (mA)		
		顺向电压(V)						

广东科斯达电子科技有限公司
 GUANG DONG KE SI DA ELECTRONIC TECHNOLOGY CO., LTD.

TOLERANCE UNLESS OTHERWISE STATED:
 Up to 5 ±0.2
 Above 5 ~ 15 ±0.3
 Above 15 ~ 30 ±0.4
 Above 30 ~ 50 ±0.5
 Angle ±0.3

3RD. ANGEL'S

UNITS MM

DRAWN BY:	DATE	MAT'L	TITLE	SWITCH
Jack Lu	12/27/22	FINISH	MODLE	TACT SWITCH WITH LED
CHECKED BY:	DATE	SCALE	DWG NO.	SIZE
Jacky Chen	12/27/22	1 : 1	PART NO.	A4
APPROVED BY:	DATE	SHEET NO.		VER
Tony Kao	12/27/22	1 of 1		R