

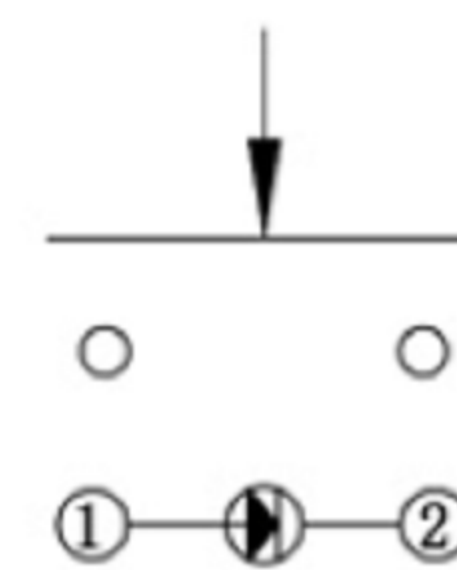
**SPECIFICATIONS**

Circuit	:SPST
Current rating	:0.2A
Voltage rating	:250VAC
Dielectric withstanding voltage	:1000VAC for 1 minute
Contact resistance	:50mΩ Max
Insulation resistance	:100MΩ Min
Travel	:2.0mm± 0.5mm
Operating Force	:500± 150gf
Mechanical Life	:Over 200,000 cycles
Electrical Life	:Over 30,000 cycles
Manual Welding	:350° C for 3 seconds
Function	:Momentary
Operating temperature	:-40° C ~ +85° C
Level of protection	: IP67
Uv rating	: f1

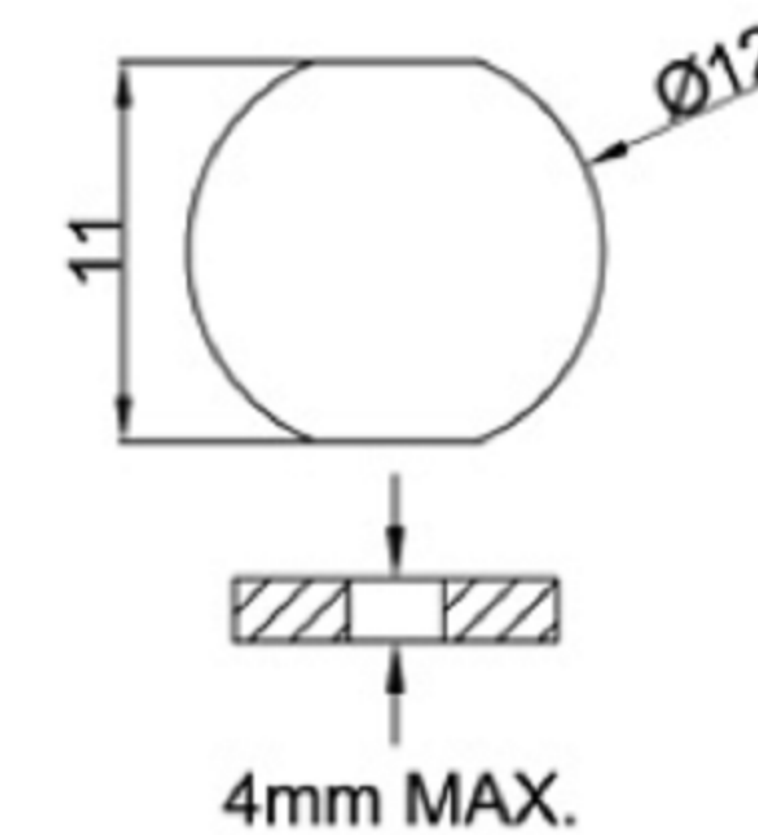
**MATERIAL:**

Base: PA,UL rated: 94 V-2 Min;  
 Cap: PA,UL rated: 94 V-2 Min;  
 Terminal: Copper,Silver plated ;  
 Nut: Brass, NI Plated .

Circuit Diagram



Panel Mounting



 **广东科斯达电子科技有限公司**  
**GUANG DONG KE SI DA ELECTRONIC TECHNOLOGY CO., LTD.**

TOLERANCE UNLESS OTHERWISE STATED :  
 Up to 5 ±0.2  
 Above 5 ~ 15 ±0.3  
 Above 15 ~ 30 ±0.4  
 Above 30 ~ 50 ±0.5  
 Angle ±0.3

3RD. ANGEL'S

UNITS MM

DRAWN BY:	DATE	MAT'L	TITLE	SWITCH
Jack Lu	12/27/22			
CHECKED BY:	DATE	FINISH	MODLE	TACT SWITCH WITH LED
Jacky Chen	12/27/22			
APPROVED BY:	DATE	SCALE	DWG NO.	
Tony Kao	12/27/22	1 : 1		
		SHEET NO.	PART NO.	
		1 of 1		

ITEM NO.	DESCRIPTION	DRAWN	DATE