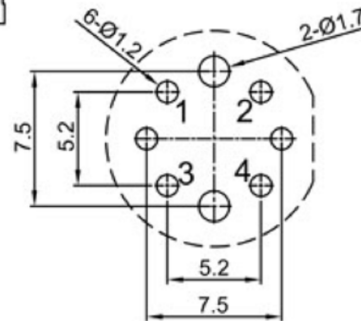
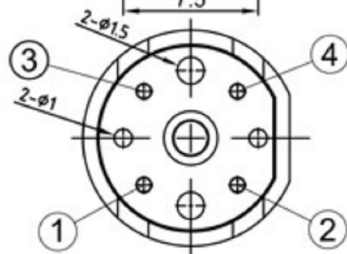
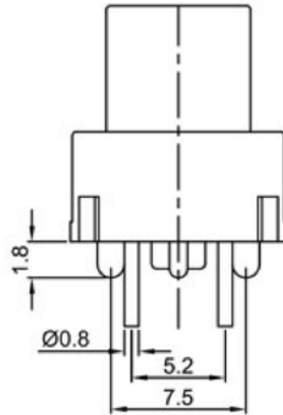
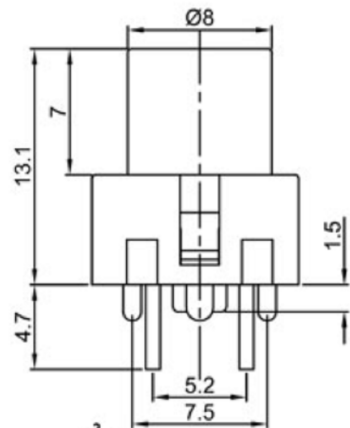
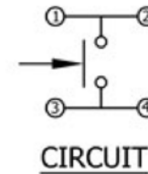


Specifications

Circuit :SPST
 Current rating :30mA
 Voltage rating :30VDC
 Dielectric withstanding voltage :500VAC for 1 minute
 Contact resistance :30m Ω Max. (Inital)
 Insulation resistance :100M Ω Min
 Operating force :300±50gf
 Total travel :0.7mm±0.2mm
 Operating life :100,000 cycles Min.
 Solder specifications :260±5° C for 5 seconds
 Operating temperature :-20° C ~ +60° C
 Welding method :Manual Soldering
 (350° C±5° C,3s±0.5s)



P.C.B.LAYOUT



CIRCUIT

Y	Yellow	黄色
W	White	白色
U	Blue	蓝色
R	Red	红色
O	Orange	橙色
G	Green	绿色
B	Black	黑色
A	Gray	灰色
CAP COLOR (X)		

广东科斯达电子科技有限公司
GUANG DONG KE SI DA ELECTRONIC TECHNOLOGY CO., LTD.

TOLERANCE UNLESS OTHERWISE STATED:
 Up to 5 ±0.2
 Above 5 ~ 15 ±0.3
 Above 15 ~ 30 ±0.4
 Above 30 ~ 50 ±0.5
 Angle ±0.3



UNITS MM

DRAWN BY: Jack Lu
 CHECKED BY: Jacky Chen
 APPROVED BY: Tony Kao
 DATE: 12/27/22

MATL		TITLE	SWITCH
FINISH		MODLE	TACT SWITCH WITH LED
SCALE	1 : 1	DWG NO.	
SHEET NO.	1 of 1	PART NO.	

SIZE A4
 VER R

ITEM NO.	DESCRIPTION	DRAWN	DATE