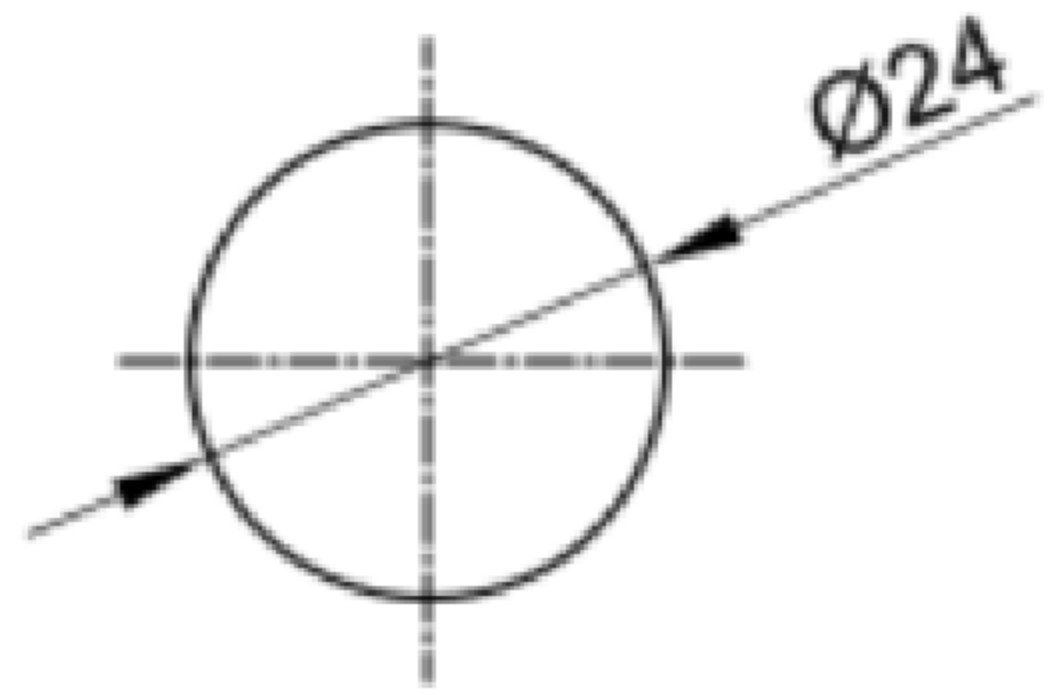


MOUNTING HOLE

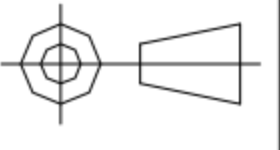


**Specifications:**

Cat#PBS-11,12,14&16 Rating:1A 250VAC(TUV),3A 125VAC  
0.3A 50VDC  
Cat#PBS-13B/C Rating:4A 250VAC(TUV),8A 125VAC  
Contact Resistance:20mΩ max.(inital)  
Insulation Resistance:500VDC 100MΩ min.  
Dielectric voltage-withstand:1000VAC for 1 minute  
Operation force:600±200 gram  
Life cycle:6,000 cycles  
Temperature Rang:0° to +85°C  
Base:PC  
Actuator:POM,optional color  
Cover:PC  
Contact:Silver  
Terminal: brass  
Washer:steel  
Nut:Steel  
Switching function:on-off,off-momentary on,or on-momentary



 **广东科斯达电子科技有限公司**  
GUANG DONG KE SI DA ELECTRONIC TECHNOLOGY CO., LTD.

TOLERANCE UNLESS OTHERWISE STATED:	Up to 5 ±0.2	Above 5 ~ 15 ±0.3	Above 15 ~ 30 ±0.4	Above 30 ~ 50 ±0.5	Angle ±0.3	3RD. ANGEL'S		UNITS	MM
------------------------------------	--------------	-------------------	--------------------	--------------------	------------	--------------	---	-------	----

DRAWN BY:	DATE	MAT'L	TITLE	SWITCH
Jack Lu	12/27/22		MODLE	TACT SWITCH WITH LED
CHECKED BY:	DATE	FINISH	DWG NO.	
Jacky Chen	12/27/22		PART NO.	
APPROVED BY:	DATE	SCALE	1 : 1	
Tony Kao	12/27/22	SHEET NO.	1 of 1	

ITEM NO.	DESCRIPTION	DRAWN	DATE