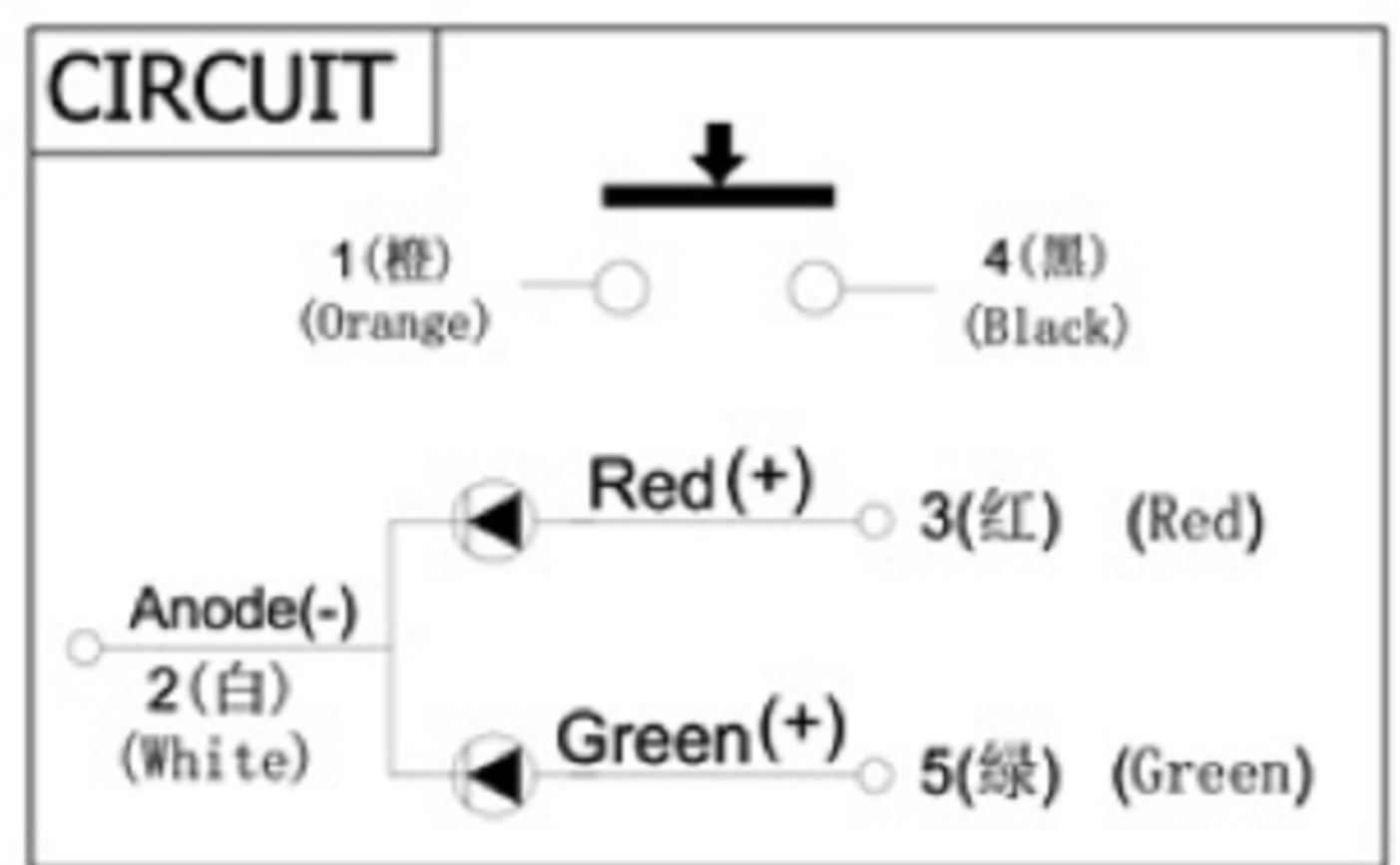


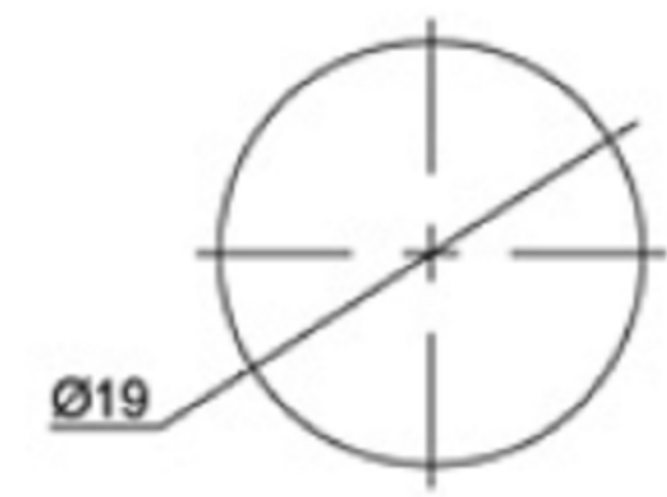
SPECIFICATIONS
 Rating: 1 to 50mA ;
 3 to 24VDC ;
 Degree of protection: IEC IP67;
 Contact Resistance: 100mΩ Max. ;
 Dielectric Strength: 250 VAC For 1 minute ;
 Insulation resistance: 100M Ω Min;
 Total Travel: 0.8~1.0 mm ;
 Operating Force: 600± 100gf ;
 Operating life: 100,000 cycles Min;
 LED Life: 50,000 hours;
 LED Rating: 20mA Max;
 3 to 24VDC ;

Switch the material:
 1. Shell material: SUS;
 2. Key: PC;
 3. Back shroud: PA66;
 4. Supporting plate: POM;

| Wire color(线材颜色) | Function(功能) |
|------------------|----------------|
| 1. Orange(橙) | Function<开关功能> |
| 2. White(白色) | Anode(-)<共阴极> |
| 3. Red(红色) | Red(+)<红灯正极> |
| 4. Black(黑色) | Function<开关功能> |
| 5. Green(绿色) | Green(+)<绿灯正极> |
| 6. Yellow(黄色) | |



PAD LAYOUT



广东科斯达电子科技有限公司
 GUANG DONG KE SI DA ELECTRONIC TECHNOLOGY CO., LTD.

TOLERANCE UNLESS OTHERWISE STATED: Up to 5 ±0.2, Above 5 ~ 15 ±0.3, Above 15 ~ 30 ±0.4, Above 30 ~ 50 ±0.5, Angle ±0.3. 3RD. ANGEL'S

| | | | | |
|--------------|----------|-----------|----------|----------------------|
| DRAWN BY: | DATE | MAT'L | TITLE | SWITCH |
| Jack Lu | 12/27/22 | | | |
| CHECKED BY: | DATE | FINISH | MODLE | TACT SWITCH WITH LED |
| Jacky Chen | 12/27/22 | | | |
| APPROVED BY: | DATE | SCALE | DWG NO. | SIZE |
| Tony Kao | 12/27/22 | 1 : 1 | | A4 |
| | | SHEET NO. | PART NO. | VER |
| | | 1 of 1 | | R |

| ITEM NO. | DESCRIPTION | DRAWN | DATE |
|----------|-------------|-------|------|
| | | | |