



RS 22 SERIES ROTARY SWITCHES

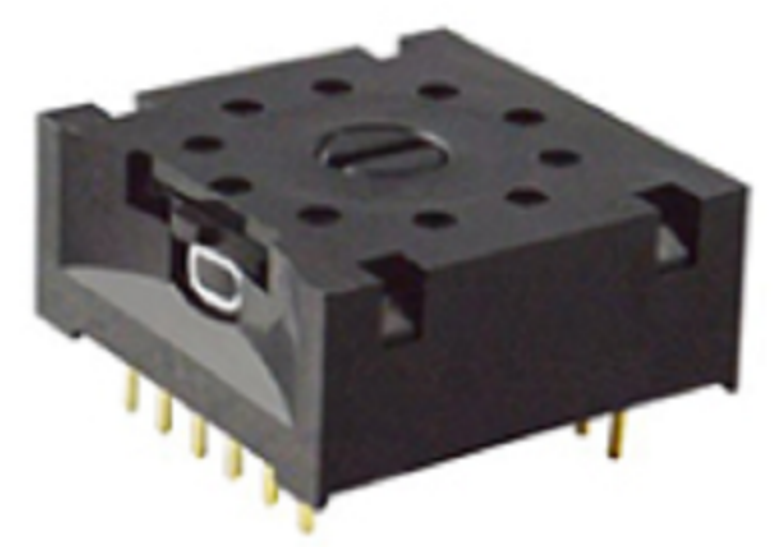


RS22-10-01-G-H

SPECIFICATIONS

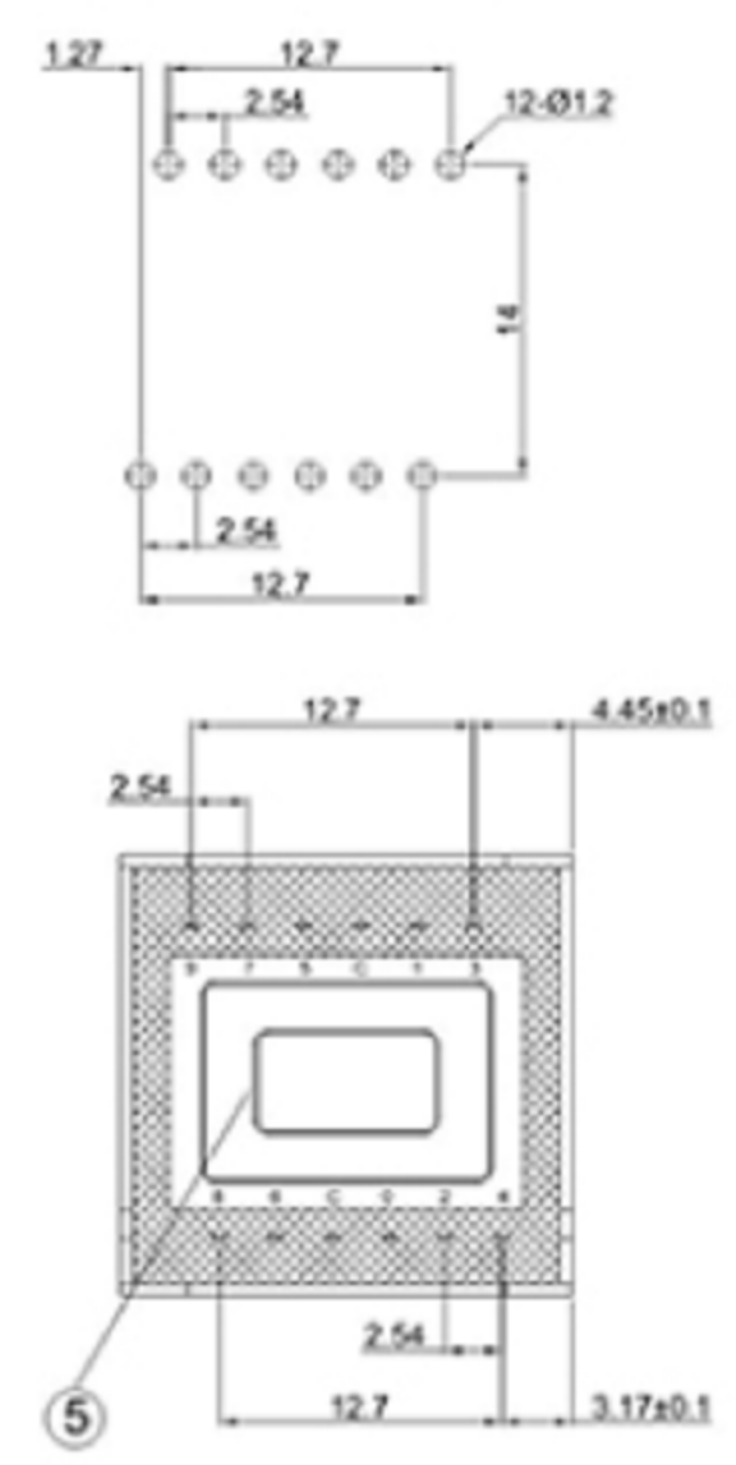
Circuit	:SPST
Current rating	:3A
Voltage rating	:28VDC
Maximum breaking current	:125mA (28VDC)
Minimum operating current	:10μA (5VDC)
Dielectric withstanding voltage	:500VAC for 1 minute
Contact resistance	:100mΩ Max. (Initial) :200mΩ Max. (Final)
Insulation resistance	:1000MΩ Min.
Operating force	:39.2mN·m Max.
Life Test:	:100,000 cycles Min
Solder specifications	:260°C for 5 seconds
Operating temperature	:-25°C ~ +70°C

MATERIAL:
 Base : PA66+GF,UL rated:94 v-2 Min;
 Cap: PA66+GF;
 Terminal: Copper alloy,Gold plated;



RS22-10-01-G-H

P.C.B. LAYOUT



CIRCUIT

		10 进									
		功能脚端子序号排列分布									
表示	0	1	2	3	4	5	6	7	8	9	
0	●										
1		●									
2			●								
3				●							
4					●						
5						●					
6							●				
7								●			
8									●		
9										●	

广东科斯达电子科技有限公司
 GUANG DONG KE SI DA ELECTRONIC TECHNOLOGY CO., LTD.

TOLERANCE UNLESS OTHERWISE STATED:
 Up to 5 ±0.2
 Above 5 ~ 15 ±0.3
 Above 15 ~ 30 ±0.4
 Above 30 ~ 50 ±0.5
 Angle ±0.3

3RD. ANGEL'S

UNITS MM

DRAWN BY:	DATE	MAT'L	TITLE	SWITCH
Jack Lu	12/27/22			
CHECKED BY:	DATE	FINISH	MODLE	TACT SWITCH WITH LED
Jacky Chen	12/27/22			
APPROVED BY:	DATE	SCALE	DWG NO.	SIZE
Tony Kao	12/27/22	1 : 1		A4
		SHEET NO.	PART NO.	VER
		1 of 1		R