



**Fuse Holder For Overload Protection**

**Rating: 10A 250VAC (VDE)**

**20A 600VAC/DC**

**Rated Power Acceptance IEC: 4W / 10A 250VAC ;**

**Dielectric Strength: >3kV**

**>4kV between L/N-PE (50HZ 1min);**

**Insulation Resistance: >10MΩ between L-N**

**>100MΩ between Front Panel and L/N;  
(500VDC 1min)**

**Impulse Withstand Voltage: >4kV between L-N;**

**>6kV between Front Panel and L/N;**

**Contact Resistance: 10mΩ Max;**

**Fuse-Link: Ø5x20 or Ø6.0x30mm;**

**Degree of Protection: IP40**

**Cap:Screw type;**

**Mounting:Panel mount,Front Side;**

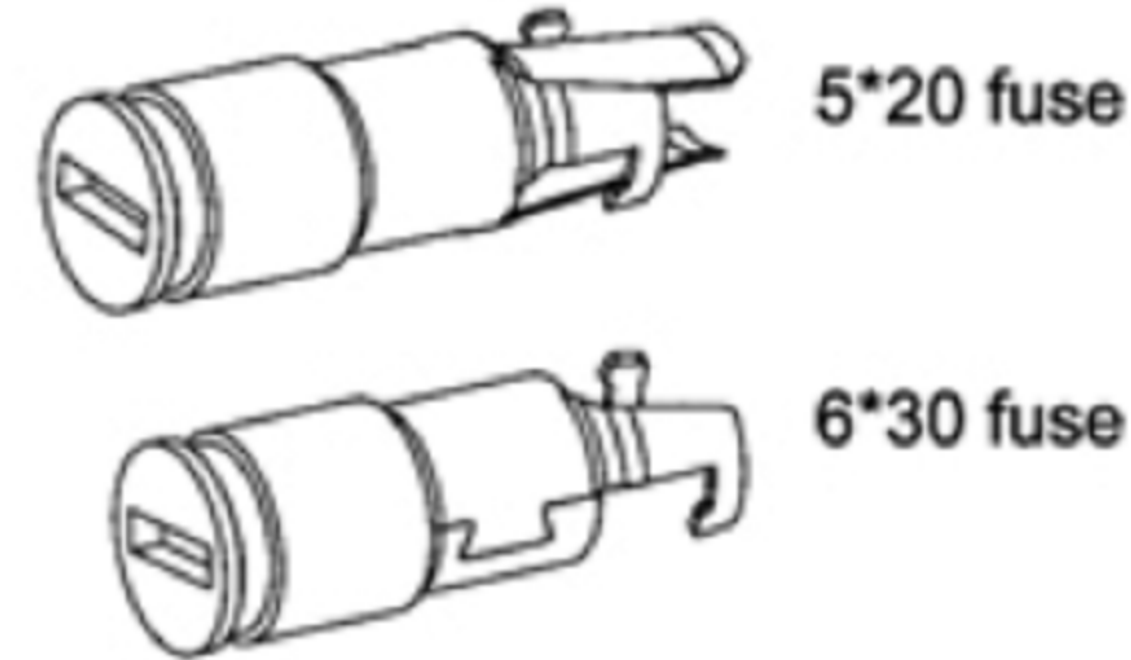
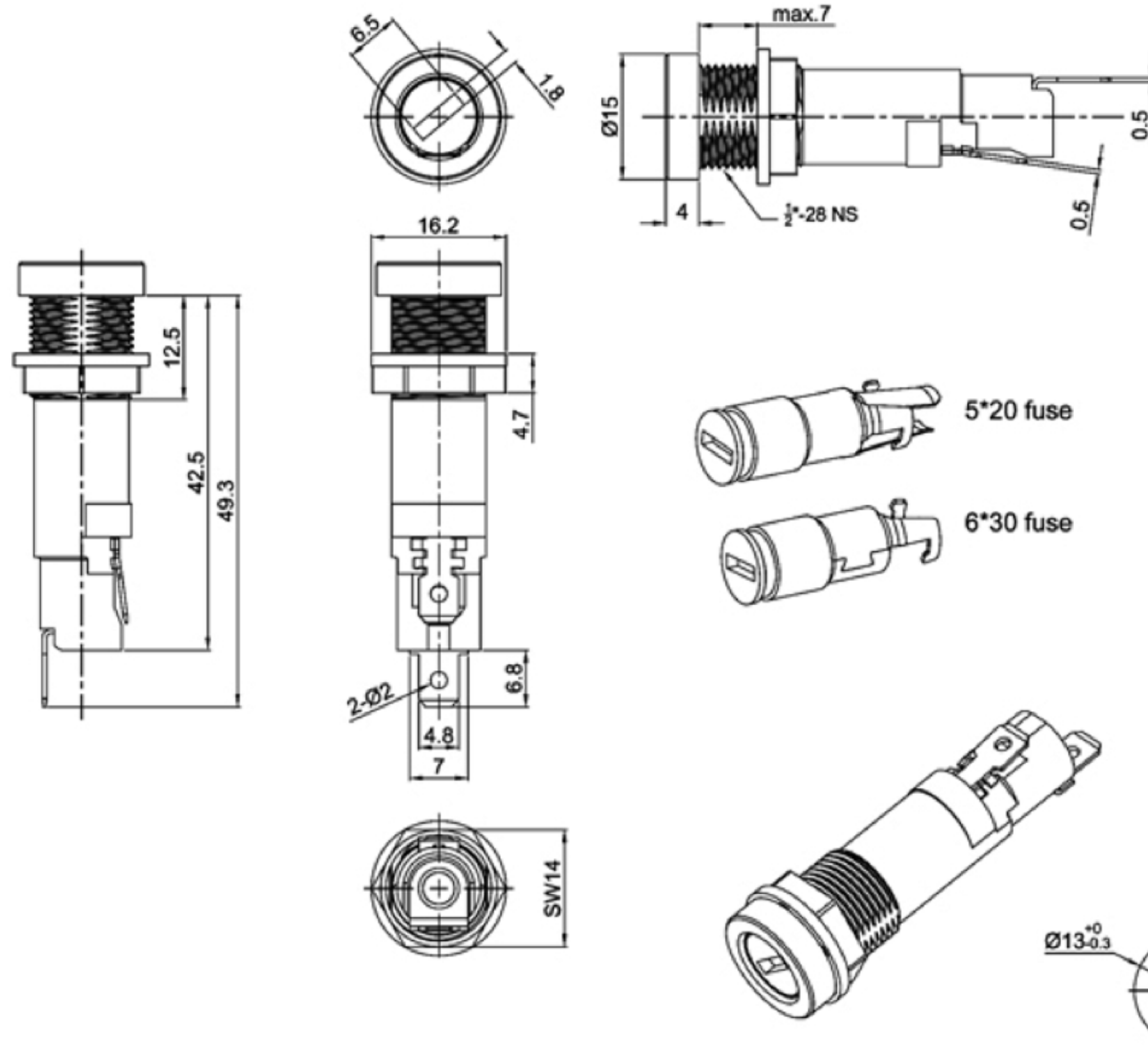
**Admissible Torque on Fixing Nut: max 1.2Nm;**

**Panel thickness:7.0mm max;**

**Operating Temperature: -40°C ~ +85°C;**

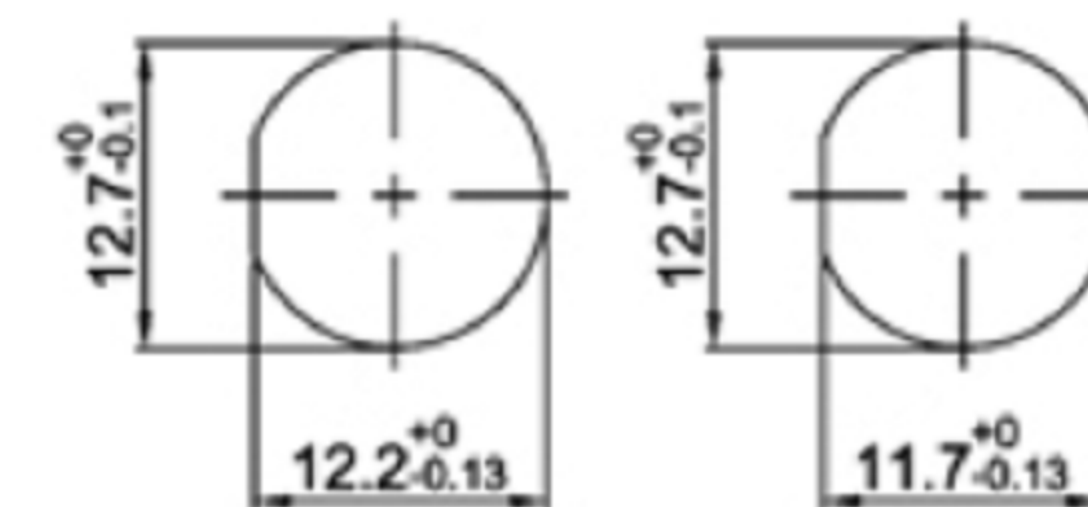
**Soldering Methods: Manual Soldering(350°C±5°C,3s±0.5s);**

**Safety Approval: CE CCC**



**Mounting holes**

**Panel thickness**



**广东科斯达电子科技有限公司**  
**GUANG DONG KE SI DA ELECTRONIC TECHNOLOGY CO., LTD.**

TOLERANCE UNLESS OTHERWISE STATED:  
 Up to 5 ±0.2  
 Above 5 ~ 15 ±0.3  
 Above 15 ~ 30 ±0.4  
 Above 30 ~ 50 ±0.5  
 Angle ±0.3

3RD. ANGEL'S

UNITS MM

DRAWN BY:	DATE	MAT'L	TITLE	SWITCH
Jack Lu	12/27/22			
CHECKED BY:	DATE	FINISH	MODLE	TACT SWITCH WITH LED
Jacky Chen	12/27/22			
APPROVED BY:	DATE	SCALE	DWG NO.	SIZE
Tony Kao	12/27/22	1 : 1		A4
		SHEET NO.	PART NO.	VER
		1 of 1		R