

Fuse holder for overload protection

Screw-in mounting

Rating: 10A 250VAC

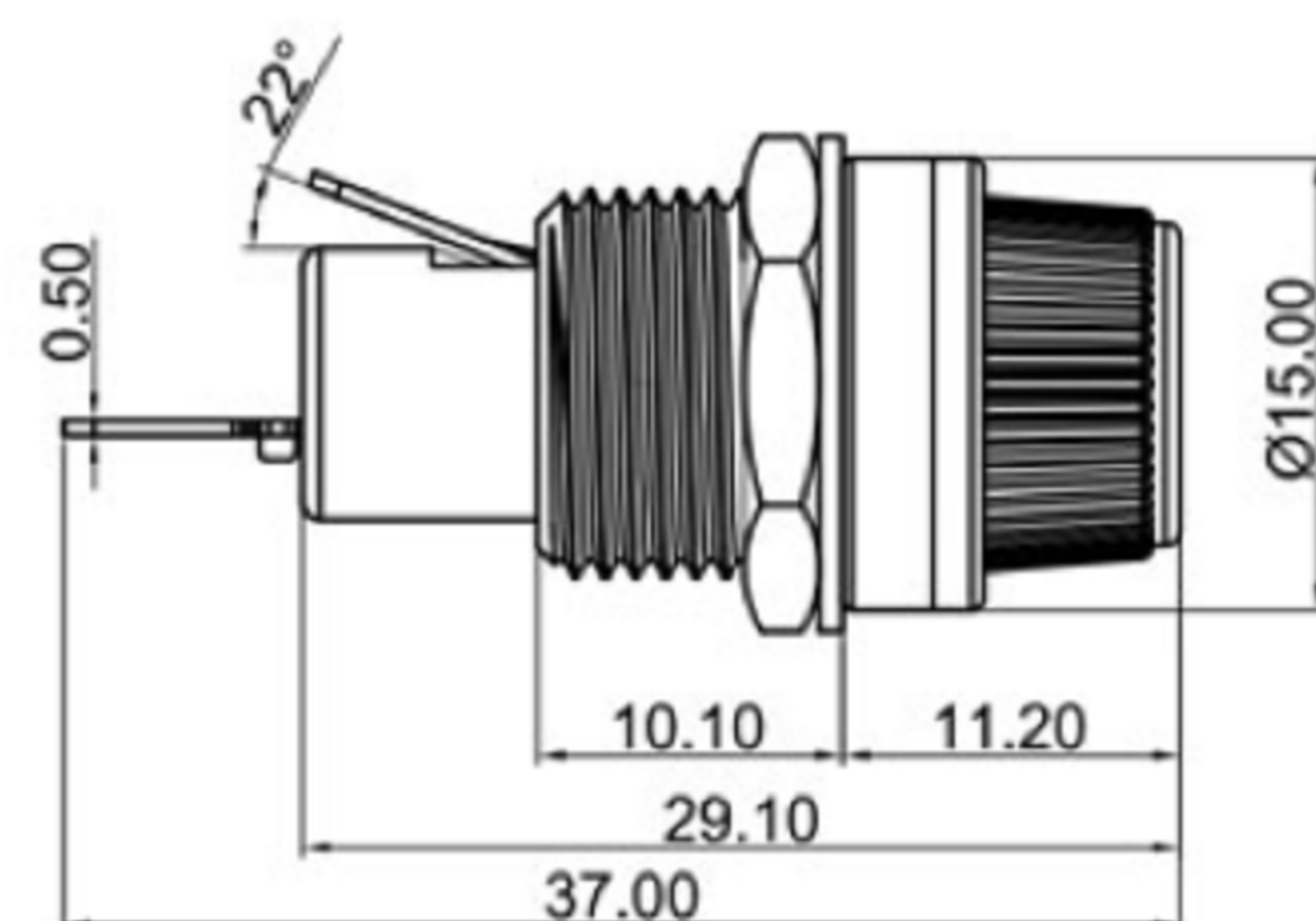
Fuse: $\varnothing 5.0 \times 20 \text{mm}$

Cap: Screw type

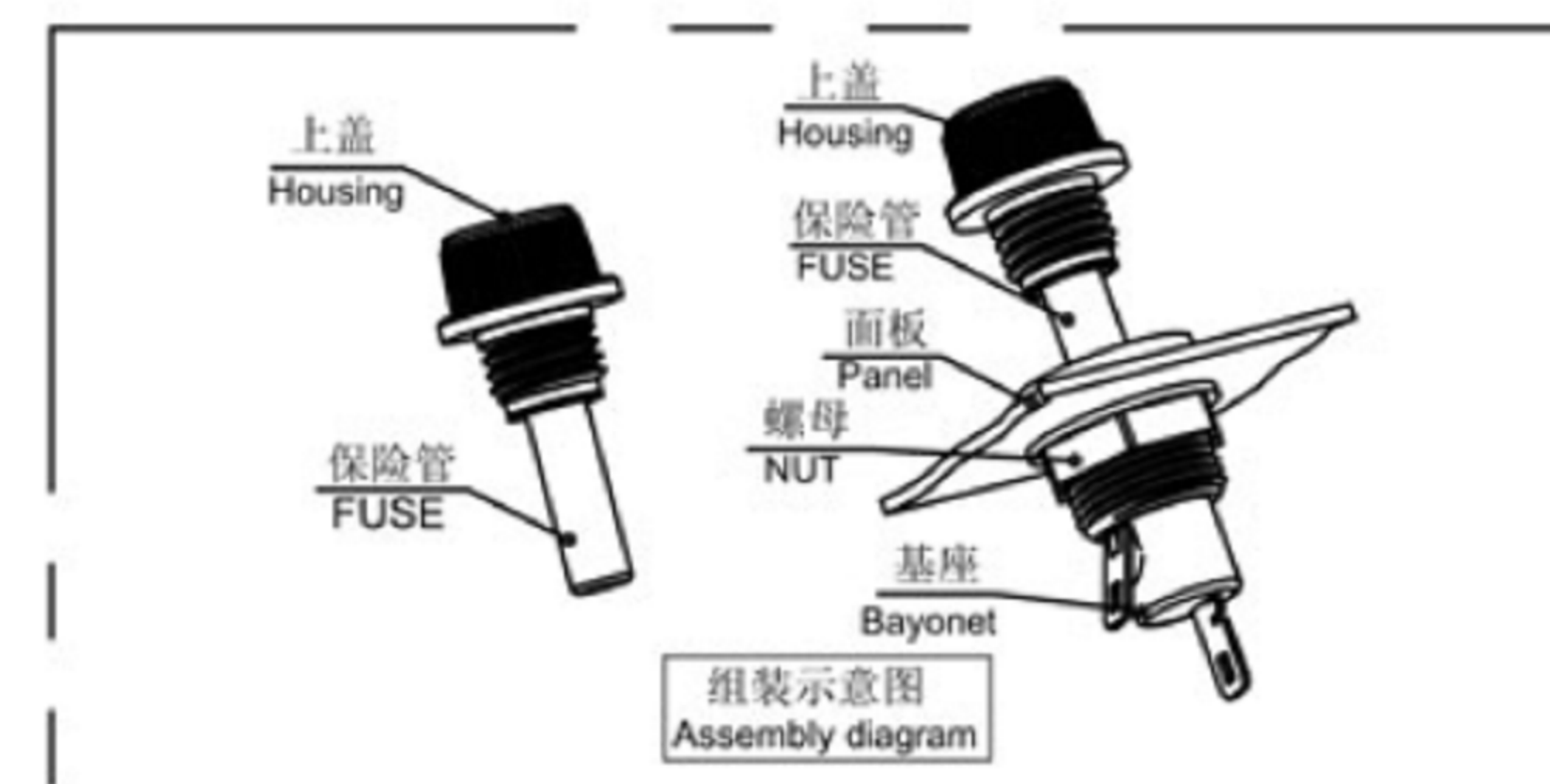
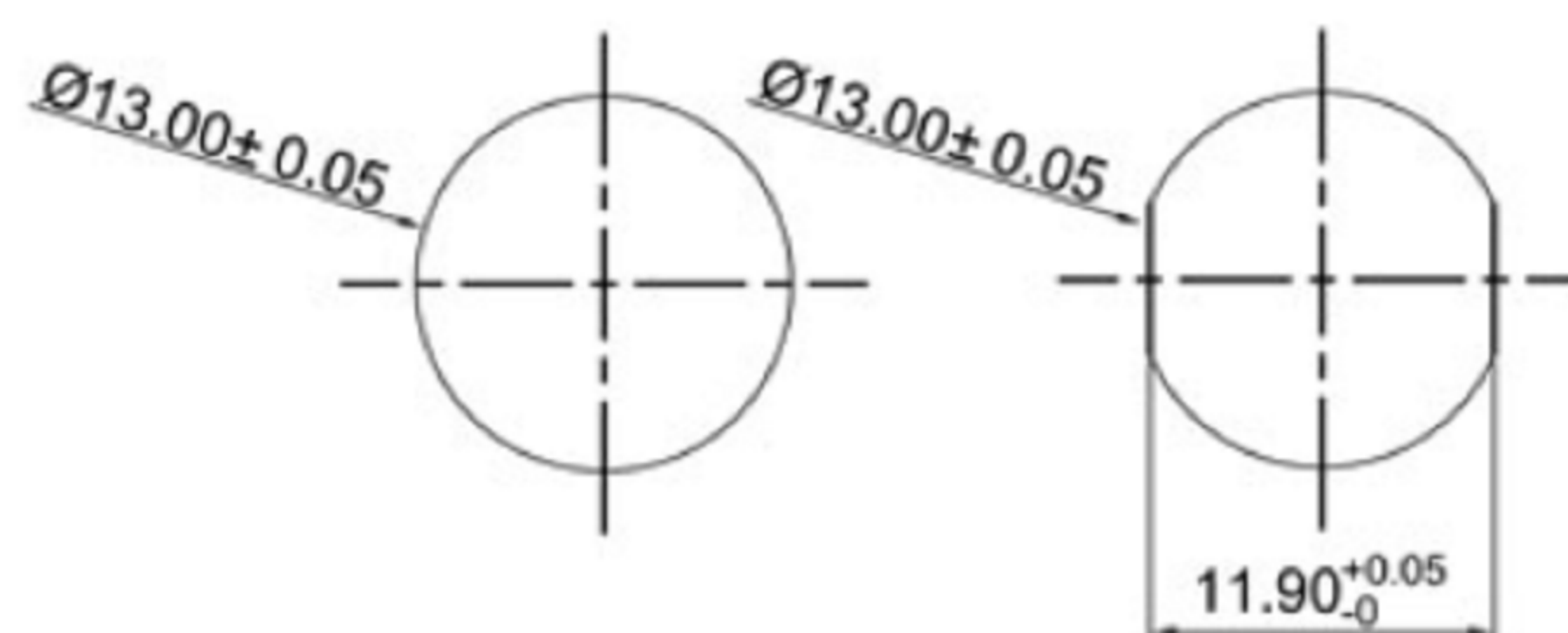
Panel thickness: 4.5mm max

Operating Temperature: $-10^{\circ}\text{C} \sim +70^{\circ}\text{C}$

Welding method: Manual Soldering ($350^{\circ}\text{C} \pm 5^{\circ}\text{C}, 3\text{s} \pm 0.5\text{s}$)



CUT-OUT



安装方法:

1. 将基座装入适配面板, 用螺母进行固定, 完成后进行端子焊线.
2. 装保险丝进入上盖, 然后将上盖装入基座中扭紧.

Installation method:

1. The base into adapter panel, using the fixed nut, after the completion of the terminal welding wire.
2. Put the fuse into the cover, and then stamped into the base of twist.

广东科斯达电子科技有限公司
GUANG DONG KE SI DA ELECTRONIC TECHNOLOGY CO., LTD.

TOLERANCE UNLESS OTHERWISE STATED: Up to 5 ± 0.2 , Above 5 ~ 15 ± 0.3 , Above 15 ~ 30 ± 0.4 , Above 30 ~ 50 ± 0.5 , Angle ± 0.3 . 3RD. ANGEL'S UNITS MM

DRAWN BY:	DATE	MAT'L	TITLE	SWITCH
Jack Lu	12/27/22			
CHECKED BY:	DATE	FINISH	MODLE	TACT SWITCH WITH LED
Jacky Chen	12/27/22			
APPROVED BY:	DATE	SCALE	DWG NO.	SIZE
Tony Kao	12/27/22	1:1		A4
		SHEET NO.	PART NO.	VER
		1 of 1		R