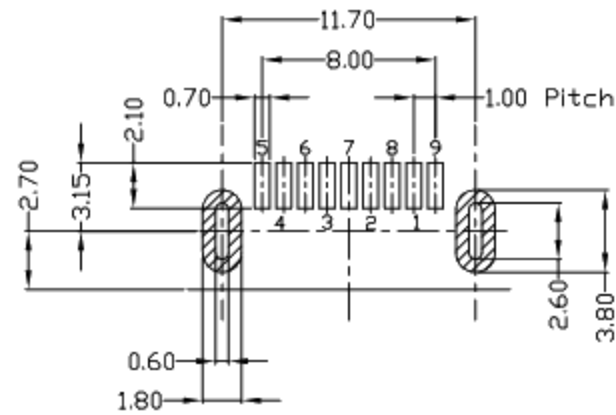
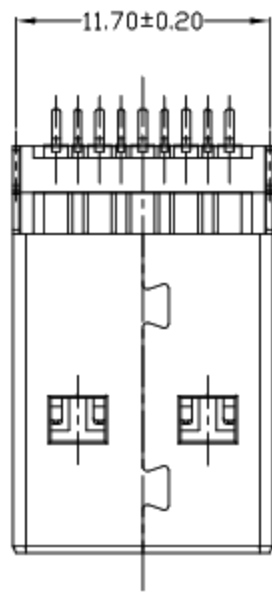
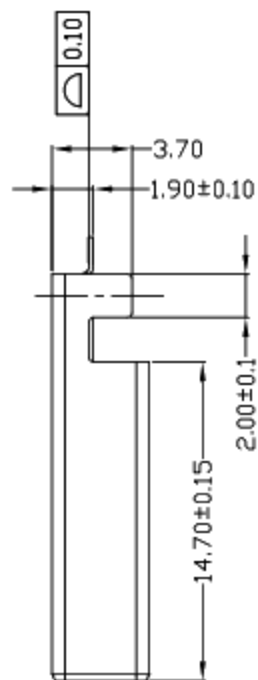
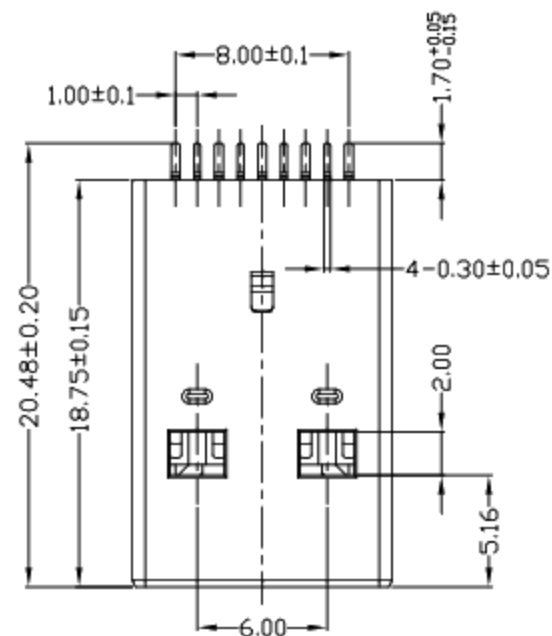


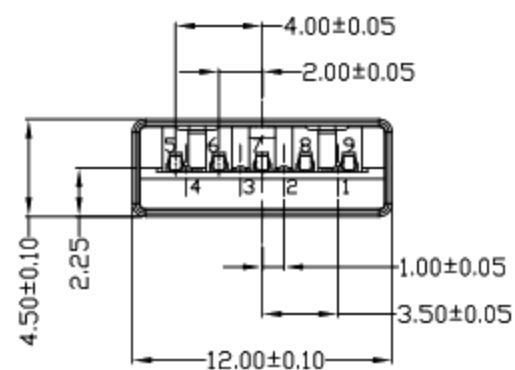
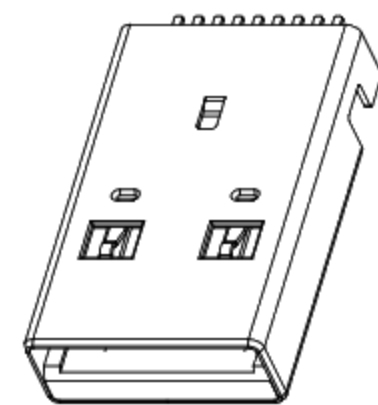


RoHS
Compliant
2002/95/EC

| REV | LTR | DESCRIPTION | DATE | REVISER | APPD |
|-----|-----|-------------|------|---------|------|
| | | | | | |



RECOMMENDED P.C.B LAYOUT



- NOTES:
- ELECTRICAL:
 - VOLTAGE CURRENT RATING: 1.5AMP, 30V AC;
 - INSULATION RESISTANCE: 100MΩ MIN;
 - CONTACT RESISTANCE: 30mΩ MAX;
 - WITHSTANDING VOLTAGE: 500V AC;
 - OPERATING TEMPERATURE: -55°C TO +85°C.
 - Mechanical:
 - Mating Force: 35N MAX
 - Unmating Force: 10N MIN.
 - DIMENSIONS MARKED *▼* TO BE CHECKED BY Q.C & IPQC.

4. PART NO.

- 1-Au 1U*
- 5-Au 15U*
- 6-Au 30U*
- W-WHITE
- B-BLACK
- BL-BLUE
- 1-PBT
- 2-PA6T
- 3-PA9T
- 4-LCP

Bill of materials:

| NO | PARTS | MATERIAL | QTY | FINISHING |
|----|----------|--------------|-----|-----------------|
| 3 | HOUSING | LCP+30%GF | 1 | PLATED NICKEL |
| 2 | SHELL | SPCC | 1 | UL94V-0 |
| 1 | TERMINAL | COPPER ALLOY | 9 | PLATED GOLD/TIN |

| UNITS | mm |
|------------|---------|
| X. ±0.35 | X.* ±2' |
| .X ±0.3 | .X* ±1' |
| .XX ±0.25 | .XX* |
| .XXX ±0.15 | .XXX* |

THESE DRAWINGS AND SPECIFICATIONS ARE THE PROPERTY OF ACCURATE INNOTECH INC. AND SHALL NOT BE REPRODUCED, COPIED OR USED IN ANY MANNER WITHOUT THE PRIOR WRITTEN CONSENT OF ACCURATE INNOTECH INC.

廣東科斯達電子科技有限公司

| | | | | |
|---|-----------|-------|------|------------------|
| TITLE: USB AM 3.0 I=18.7MM 沉板1.9MM 无柱(外壳脚长3.70MM) 锡脚1.7 | PART NO.: | | | |
| DR: Ricky 2019/2/18 | DWG NO.: | | | |
| CHKD: Ricky 2019/2/18 | SCALE | SHEET | REV. | CUSTOMER DRAWING |
| APPD: | 1:1 | 1/1 | B | |