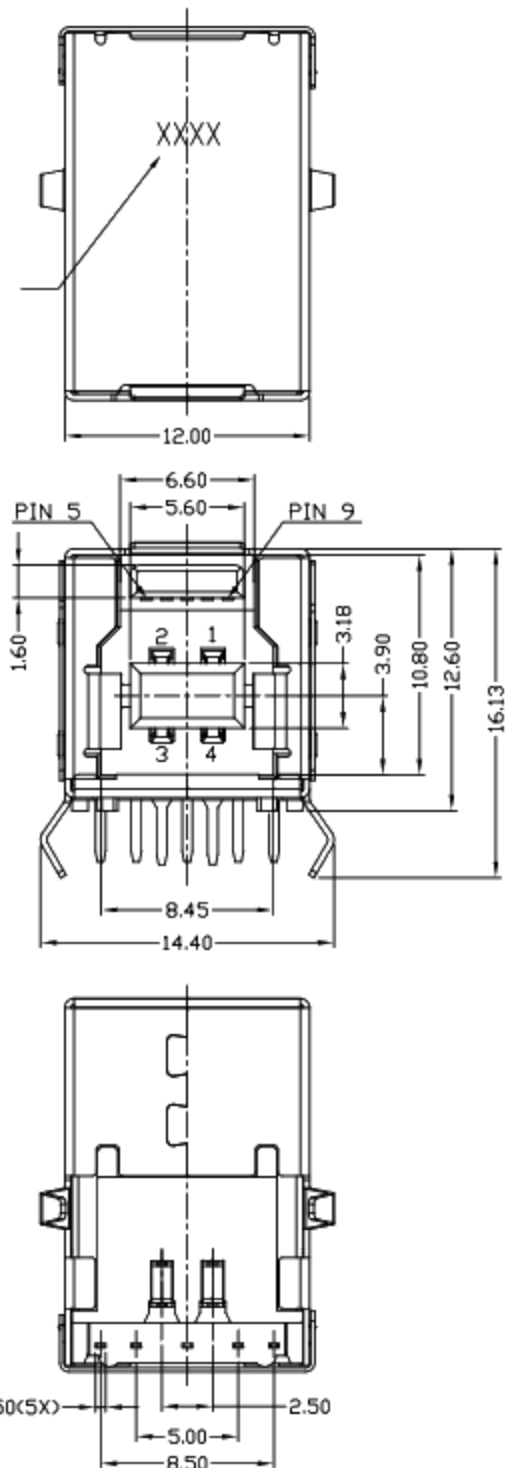




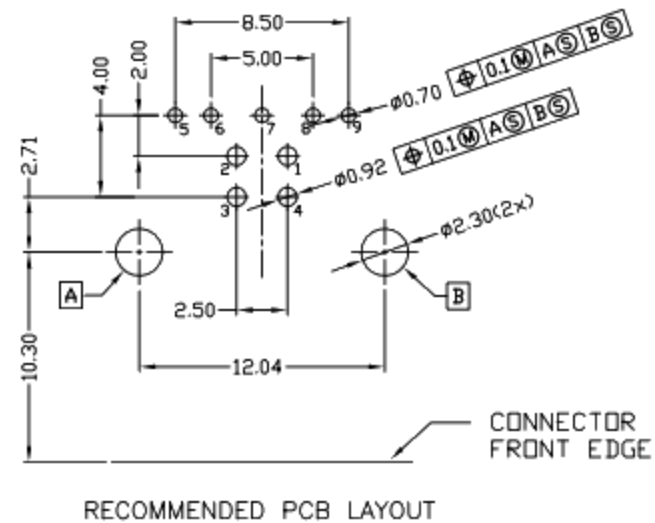
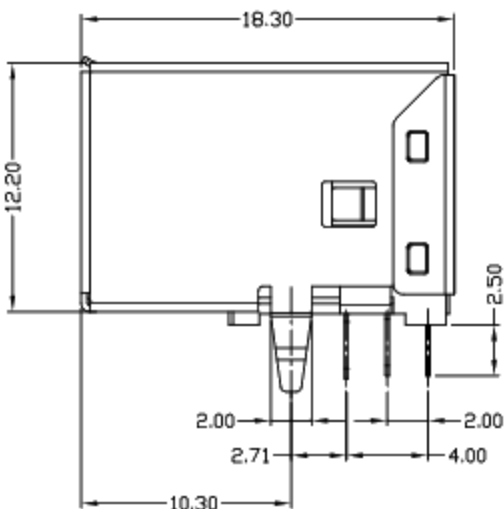
RoHS
Compliant
2002/95/EC

REV.	ECN.	NO.	APPD.

冲字内容,
依料号选择



PIN NUMBER	SIGNAL NAME
1	V BUS
2	D-
3	D+
4	GND
5	STDB_SSTX-
6	STDB_SSTX+
7	GND_DRAIN
8	STDB_SSRX-
9	STDB_SSRX+
Shell	Shield



NOTES:

- ELECTRICAL:
 - CURRENT RATING: 1.5AMP;
 - INSULATION RESISTANCE: 100MΩ MIN;
 - CONTACT RESISTANCE: 30mΩ MAX;
 - WITHSTANDING VOLTAGE: 100V AC;
 - OPERATING TEMPERATURE: -40°C ~ +85°C.
- Mechanical:
 - Mating Force: 35N MAX
 - Unmating Force: 10N MIN.
- DIMENSIONS MARKED "▼" TO BE CHECKED BY Q.C & IPQC.

4. PART NO.

1-Au 1U'	W: WHITE
5-Au 15U'	B: BLACK
6-Au 30U'	BL: BLUE
	1-PBT
	2-PA6T
	3-PA9T
	4-LCP

Bill of materials:

NO	PARTS	MATERIAL	QTY	FINISHING	UNITS	mm
5	HOUSING	LCP+30%GF	1	UL94V-0	X. ±0.35	X.* ±2*
4	BACK COVER	COPPER ALLOY/SPCC	1	PLATED NICKEL	.X ±0.3	.X* ±1*
3	SHELL	COPPER ALLOY	1	PLATED NICKEL	.XX ±0.25	.XX*
2	TERMINAL(4P)	COPPER ALLOY	4	PLATED GOLD/TIN	.XXX ±0.15	.XXX*
1	TERMINAL(5P)	COPPER ALLOY	5	PLATED GOLD/TIN		
NO	PARTS	MATERIAL	QTY	FINISHING		

THESE DRAWINGS AND SPECIFICATIONS ARE THE PROPERTY OF ACCURATE INMTECH INC AND SHALL NOT BE REPRODUCED, COPIED OR USED IN ANY MANNER WITHOUT THE PRIOR WRITTEN CONSENT OF ACCURATE INMTECH INC.

UNITS mm		廣東科斯達電子科技有限公司	
MAT'L SEE NOTE			
FINISH SEE NOTE		TITLE: USB3.0 90° DIP 弯脚 H12.6 成品图	
Q'TY		PART NO.:	
APPD:		DWG NO.:	
CHKD: gon 2017/01/09		SCALE SHEET REV. CUSTOMER DRAWING	
APPD: gon 2017/01/09		1:1 1/1 B	