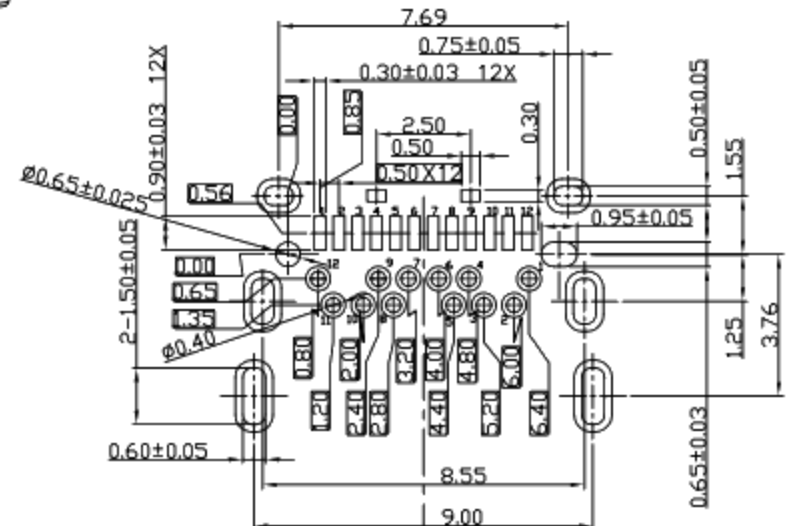
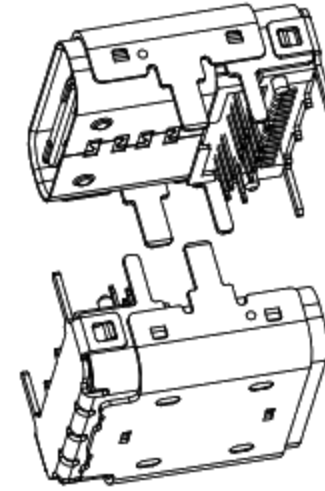
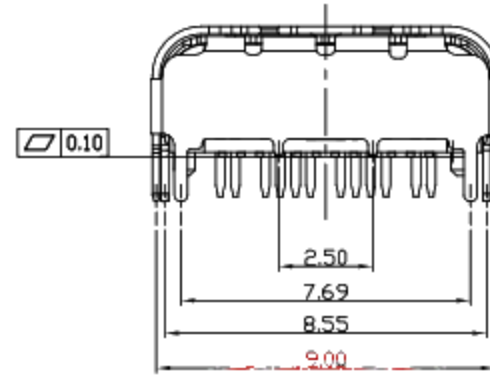
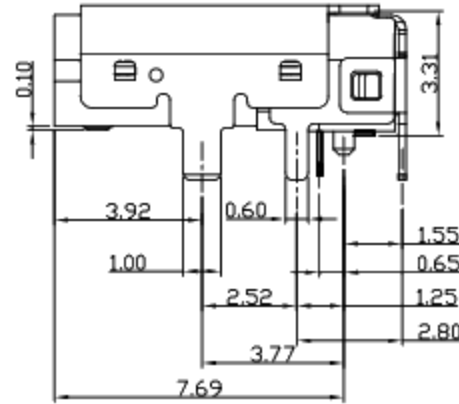
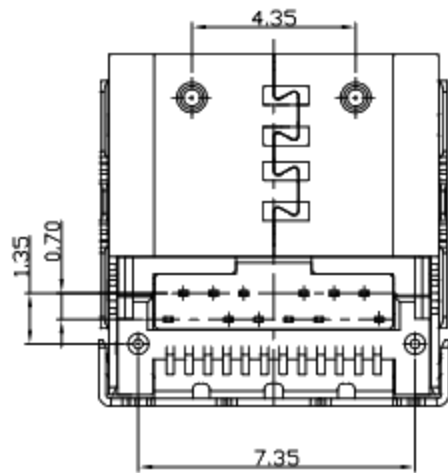
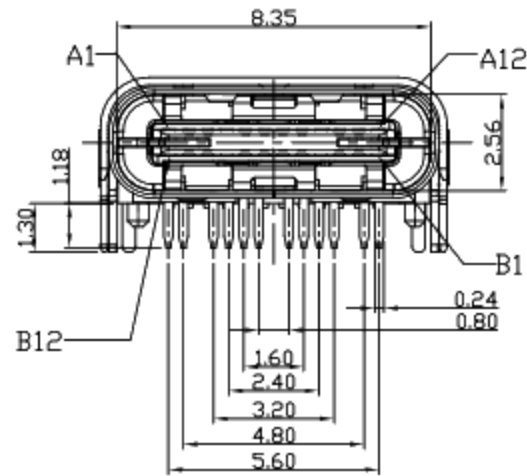
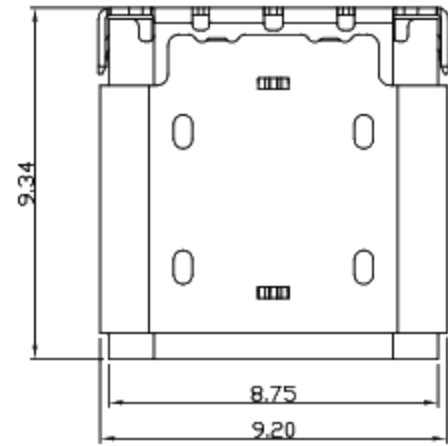




RoHS Compliant
2002/95/EC

REV.	ECN.	NO.	APPD.



CONNECTOR FRONT EDGE

RECOMMENDED P.C.B. LAYOUT (T:1.00mm)
TOLERANCE UNSPECIFIED ±0.05mm

A1	GND	B12	GND
A2	SSTXP1	B11	SSRXP1
A3	SSTXN1	B10	SSRXN1
A4	VBUS	B9	VBUS
A5	CC1	B8	SBU2
A6	DP1	B7	DN2
A7	DN1	B6	DP2
A8	SBU1	B5	CC2
A9	VBUS	B4	VBUS
A10	SSRXN2	B3	SSTXN2
A11	SSRXP2	B2	SSTXP2
A12	GND	B1	GND
PIN	SIGNAL NAME	PIN	SIGNAL NAME

NOTES:

- ELECTRICAL:
 - CURRENT RATING: 3AMP MAX;
 - INSULATION RESISTANCE: 100MΩ MIN;
 - CONTACT RESISTANCE: 40mΩ MAX;
 - WITHSTANDING VOLTAGE: 100V AC;
 - OPERATING TEMPERATURE: -30°C TO +85°C.
- Mechanical:
 - Mating Force: 5N~20N
 - Unmating Force: 8N~20N
 - Durability: 10,000 cycles
- DIMENSIONS MARKED "▼"
TO BE CHECKED BY Q.C & IPQC.

4.PART NO.



NO	PARTS	MATERIAL	QTY	FINISHING	X	X' ±2'	UNITS
6	TOP SHELL	STAINLESS STEEL	1	PLATED NICKEL	X. ±0.35	X' ±2'	mm
5	SHELL	STAINLESS STEEL	1	PLATED NICKEL	.X ±0.30	.X' ±1'	MAT'L
4	SPRING	STAINLESS STEEL	1		.XX ±0.20	.XX' ±0.5'	SEE NOTE
3	SHIELDING PLATE	STAINLESS STEEL	1	PLATED NICKEL	.XXX ±0.10	.XXX'	FINISH
2	CONTACT	COPPER ALLOY	24	PLATED GOLD/NICKEL			SEE NOTE
1	HOUSING	LCP+30%GF	1	UL94V-0			Q'TY

THESE DRAWINGS AND SPECIFICATIONS ARE THE PROPERTY OF ACCURATE INNOTECH INC AND SHALL NOT BE REPRODUCED, COPIED OR USED IN ANY MANNER WITHOUT THE PRIOR WRITTEN CONSENT OF ACCURATE INNOTECH INC

廣東科斯達電子科技有限公司

TITLE:	PART NO.:			
USB C F TYPE 前插后贴带上盖				
DR:	DWG NO.:			
Ricky 2017/11/13				
CHKD:	SCALE	SHEET	REV.	CUSTOMER DRAWING
Ricky 2017/11/13	1:1	1/1	B	
APPD:				