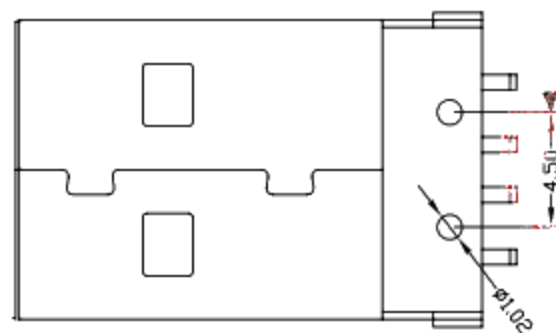
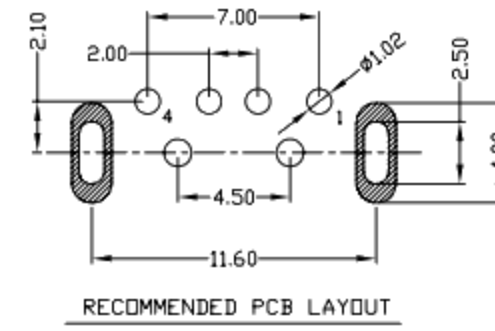
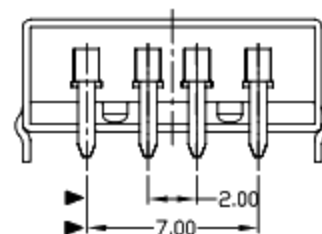
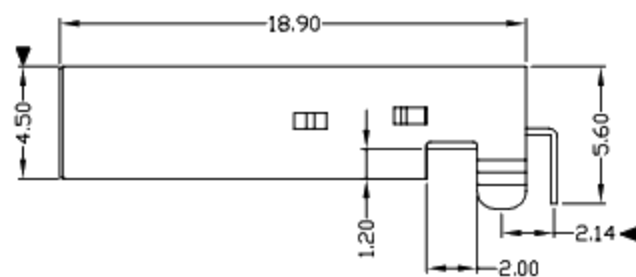
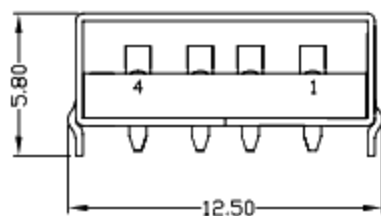
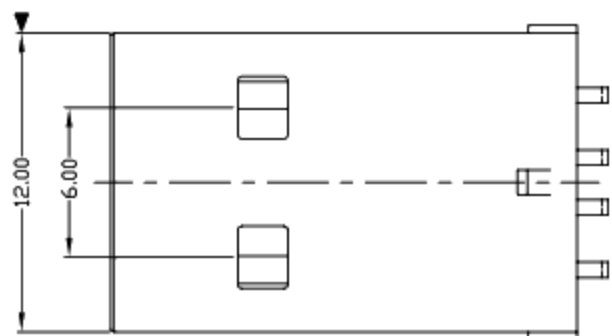




RoHS
Compliant
2002/95/EC

REV.	ECN.	NO.	APPD.



NOTES:

1. ELECTRICAL:

- 1) VOLTAGE CURRENT RATING: 2AMP, 30V AC;
- 2) INSULATION RESISTANCE: 1000M Ω MIN;
- 3) CONTACT RESISTANCE: 30m Ω MAX;
- 4) WITHSTANDING VOLTAGE: 500V AC;
- 5) OPERATING TEMPERATURE: -55°C TO +85°C.

2. Mechanical:

- 1) Mating Force: 35N MAX
- 2) Unmating Force: 10N MIN.

3. NOTE: 1. DIMENSIONS MARKED "▼"
TO BE CHECKED BY Q.C & IPQC.

4. PART NO.

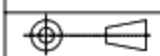
1Au 1U"
6Au 30U"

W: WHITE
B: BLACK
1PBT
2PA6T
3PA9T
4LCP

Bill of materials:

NO	PARTS	MATERIAL	QTY	FINISHING	X.	X.*	UNITS
3	HOUSING	PBT	1	UL94V-0	± 0.35	$\pm 2'$	mm
2	SHELL	SPCC	1	PLATED NICKEL	± 0.3	$\pm 1'$	MAT'L
1	TERMINAL	COPPER ALLOY	4	PLATED GOLD/TIN	± 0.25	$\pm .XX'$	SEE NOTE
					± 0.15	$\pm .XXX'$	FINISH SEE NOTE
							Q'TY

THESE DRAWINGS AND SPECIFICATIONS ARE THE PROPERTY OF ACCURATE INNOTECH INC AND SHALL NOT BE REPRODUCED, COPIED OR USED IN ANY MANNER WITHOUT THE PRIOR WRITTEN CONSENT OF ACCURATE INNOTECH INC.



廣東科斯達電子科技有限公司

TITLE: LSB A/M DIP 90° 弯脚 胶芯 1.2	PART NO.:
DR: gan 2012/7/03	DWG NO.:
CHKD: gan 2012/7/03	SCALE: 1:1
APPD:	SHEET: 1/1
	REV: B
	CUSTOMER DRAWING