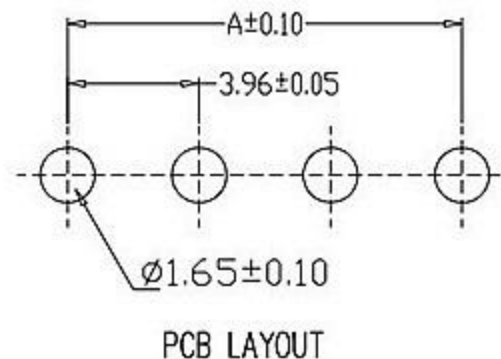
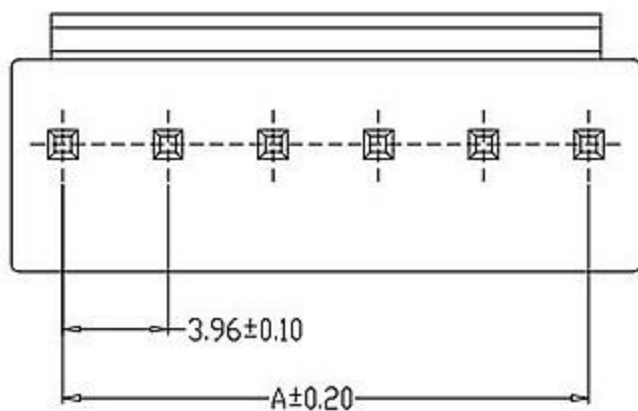


SPECIFICATIONS

Current rating : 2.0A AC , DC
 Voltage rating : 100V AC , DC
 Temperature rating : $-25^{\circ}\text{C} \sim +85^{\circ}\text{C}$
 Insulation resistance : $1,000\text{M}\Omega$ min.
 Withstand voltage : 800V AC/minute
 Contact resistance : $20\text{m}\Omega$ /Max
 Material:
 Housing : Nylon 66, UL94V-2
 Pin : Brass / Tin-plated
 Contact : Phosphor Bronze



| pin數 | A尺寸 | B尺寸 |
|------|-------|-------|
| 2pin | 3.96 | 7.92 |
| 3pin | 7.92 | 11.88 |
| 4pin | 11.88 | 15.84 |
| 5pin | 15.84 | 19.80 |
| 6pin | 19.80 | 23.76 |
| 7pin | 23.76 | 27.72 |
| 8pin | 27.72 | 31.68 |

廣東科斯達電子科技有限公司

TOLERANCE UNLESS OTHERWISE STATED :
 Up to 5 ± 0.2
 Above 5 ~ 15 ± 0.3
 Above 15 ~ 30 ± 0.4
 Above 30 ~ 50 ± 0.5
 Angle ± 0.3

3RD. ANGEL'S



UNITS MM

DRAWN BY: Jack Lu
 CHECKED BY: Jacky Chen
 APPROVED BY: Tony Kao
 DATE: 11/13/12

MAT'L
 FINISH
 SCALE: 1 : 1
 SHEET NO. 1 of 1

TITLE CONNECTOR
 MODLE
 DWG NO.
 PART NO.

SIZE A4
 VER R