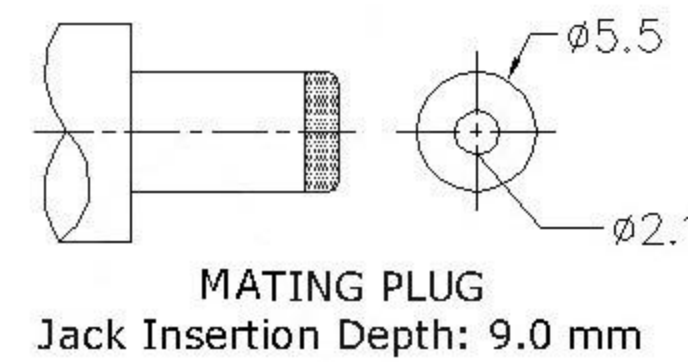
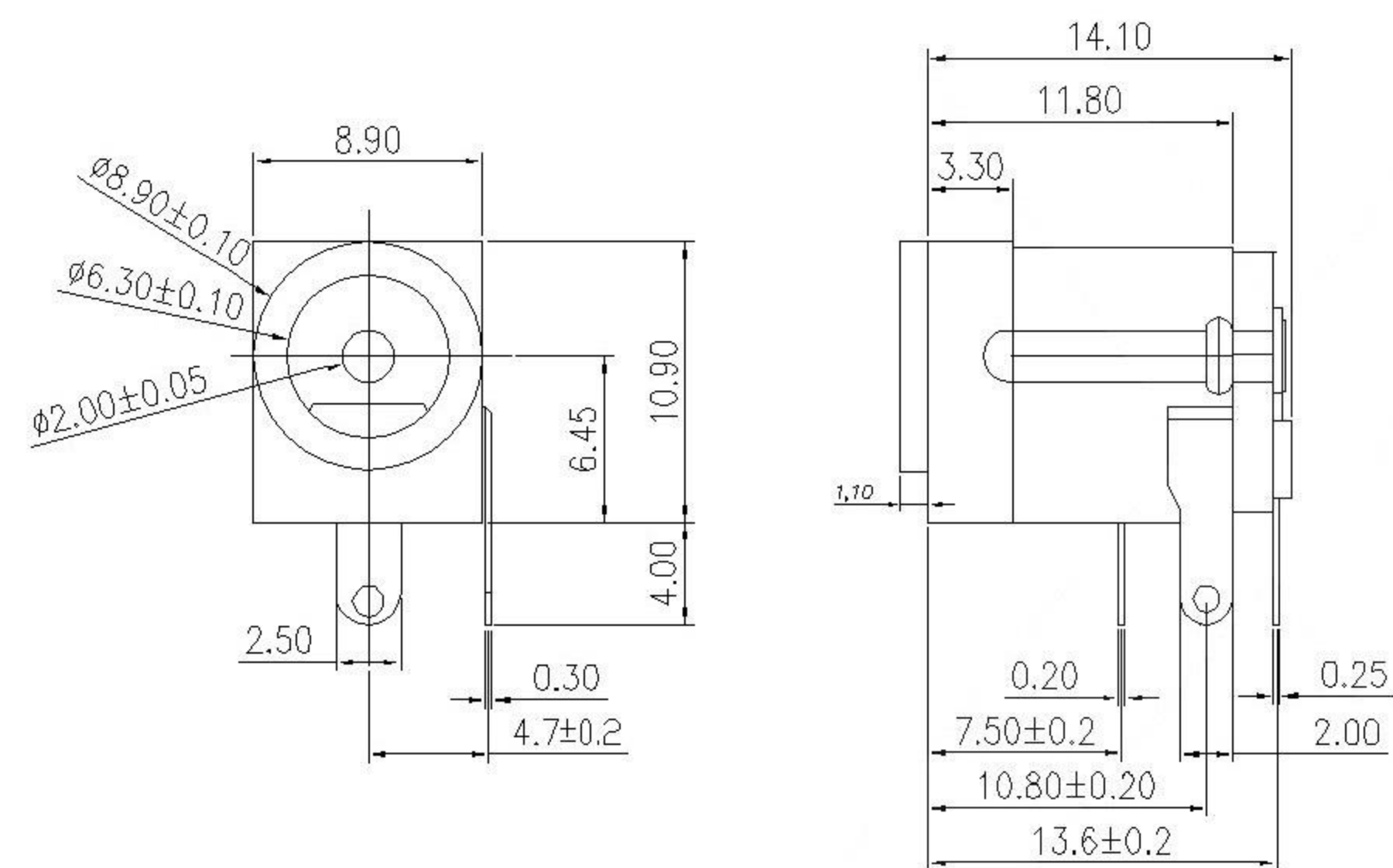


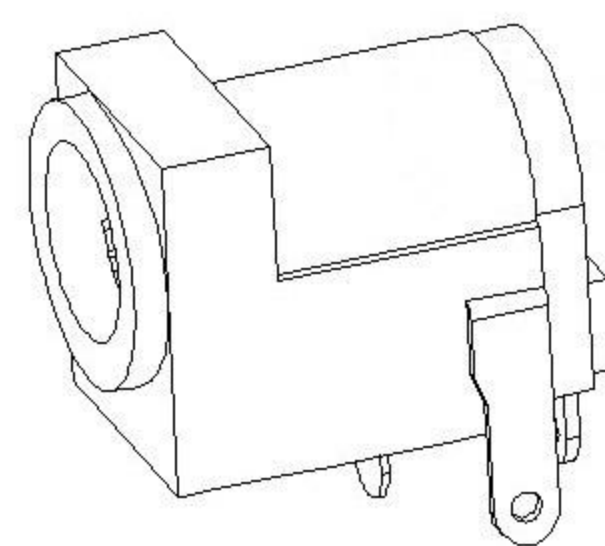
PCB LAYOUT TOP VIEW

SPECIFICATIONS:

1. ELECTRICAL CHARACTERISTICS:
 - 1-1. RATING:
 - 1-2. CONTACT RESISTANCE: 30mΩ MAX.(INITIAL)
 - 1-3. DIELECTRIC WITHSTANDING VOLTAGE: 500V AC FOR ONE MINUTE
 - 1-4. INSULATION RESISTANCE: 100MΩ MIN. MEASURED BY 500V DC
2. MECHANICAL CHARACTERISTICS:
 - 2-1. INSERTION FORCE : 0.3~3.0 KGF
 - 2-2. WITHDRAWAL FORCE : 0.3~3.0 KGF
3. LIFE TEST: 5,000 CYCLES MIN.
4. FOR REFLOW SOLDERING LEAD-FREE PROCESS.
5. * REPRESENT CRITICAL DIMENSIONS.



| | |
|------------|---------|
| SCHEMATIC | |
| Model | |
| Center Pin | Ø2.0 mm |
| | Ø2.5 mm |



| | MATERIAL | PLATING |
|------------|----------|---------|
| center pin | Brass | tin |
| terminal 1 | Brass | tin |
| terminal 2 | Sus | tin |
| terminal 3 | Brass | tin |
| plastic | Pbt | |

| MARK | DESCRIPTION | DATE | REVISED | APPROVED | UNSPECIFIED TOLERANCES | DSND | DATE | SCALE: N/A | MODEL TYPE: DC POWER JACK | | |
|-----------|-------------|------|---------|----------|------------------------|----------------------|------|------------|------------------------------|--------------|----------------|
| ΔX | | | | | ANGLAR ±5° | DWN | DATE | VIEW: | PART NO.: | | |
| ΔX | | | | | X.X ±0.2mm | CHKD | DATE | UNIT: mm | DWG NO.: | | |
| ΔX | | | | | X.XX ±0.1mm | APPD | DATE | SIZE: A4 | | | |
| ΔX | | | | | X.XXX ±0.05mm | | | | | | |
| REVISIONS | | | | | | 廣東科斯達電子科技有限公司 | | | WEIGHT 1.0g | SHEET 1/1 | REVISION A0 |