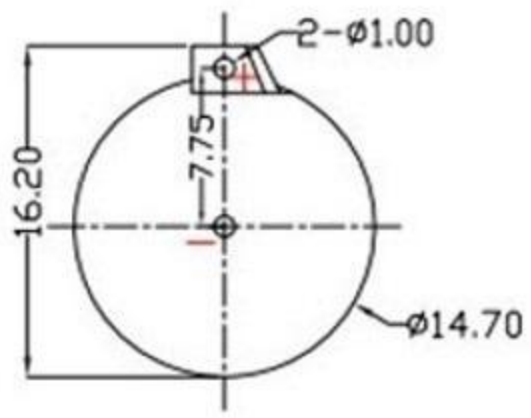
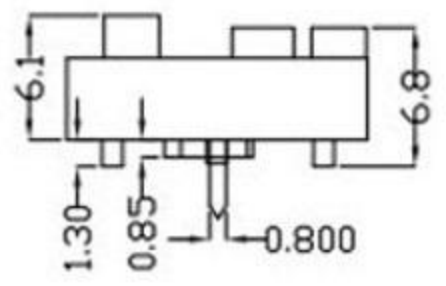
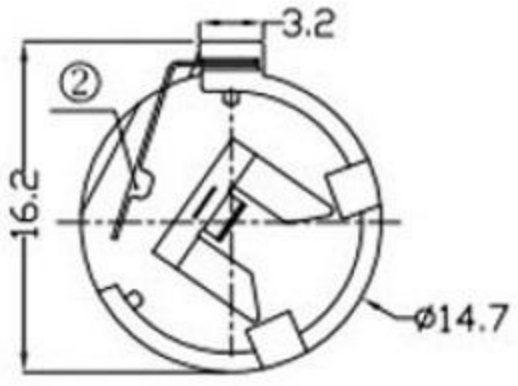
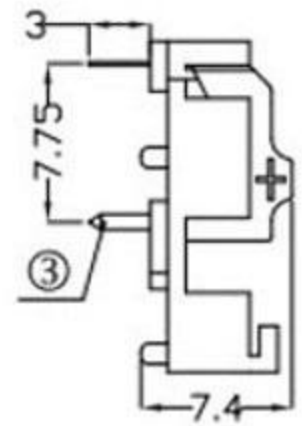




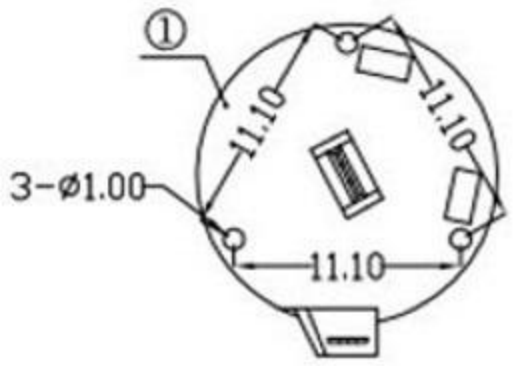
REV.	ECN NO.	REVISED	DATE

1.MATERIAL:
 a.HOUSING:PBT UL94V-0
 b.CONTACT:PHOSPHOR BRONZE
 (SURFACE PLATING:Sn100u"-120u")
 SEE ORDERING INFORMATION

2.ELECTRIC:
 a.CONTACT RESISTANCE: 30 MILLIOHMS MAX
 b.INSULATION RESISTANCE: 1000 MEGA OHMS MIN
 c.DIELECTNIC VOLTAGE: 500V AC ONE SEC LEVEL
 d.OPERATING TEMPERATURE: -25°C~ +85°C



PCB Layout Diagram
Top View



电池座系列
 DIP 90° TYPE

PLATING:
 A-Au1U"
 J-Ni100U"~120U"
 K-Sn100U"~120U"
 M-Si3U"~Ni10U"

MATERIAL:
 1A-PBT BLACK
 1B-PA66 BLACK
 2A-PPA BROWN
 2B-PPA BLACK
 3A-PPS BROWN
 3B-PPS BLACK
 4A-LCP WHITE
 4B-LCP BLACK

3	TERMINAL(-)	1	PHOSPHOR BRONZE, T=0.20mm	Sn plating
2	TERMINAL(+)	1	PHOSPHOR BRONZE, T=0.20mm	Sn plating
1	HOUSING	1	PBT	BLACK
NO.	PART NAME	Q'TY	MATERIAL	PLATING & COLOR

UNLESS OTHERWISE SPECIFIED TOLERANCES				廣東科斯達電子科技有限公司			
DECIMALS: X :±0.30 X.X :±0.25 X.XX :±0.20 X.XXX :±0.10	ANGLES: X :±1° X.X :±0.5°	DSND	DATE	2017-12-20	TITLE:		
WEIGHT: 0.40g		CHKD	DATE	2017-12-20	PART NO.:		
SHEET 1 OF 1		APVD	DATE	2017-12-20	DRAW NO.		
SCALE: 2:1	SIZE: A4	VIEW:	UNIT: mm	REV.: A/0	OBJECT: MY		