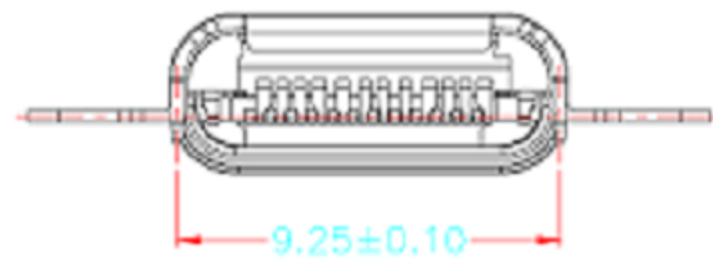
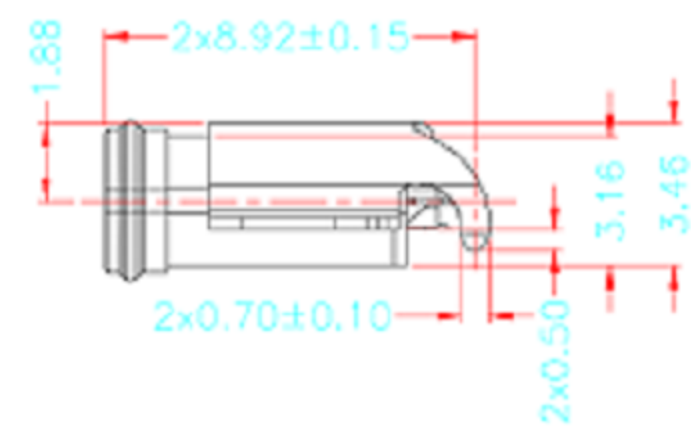
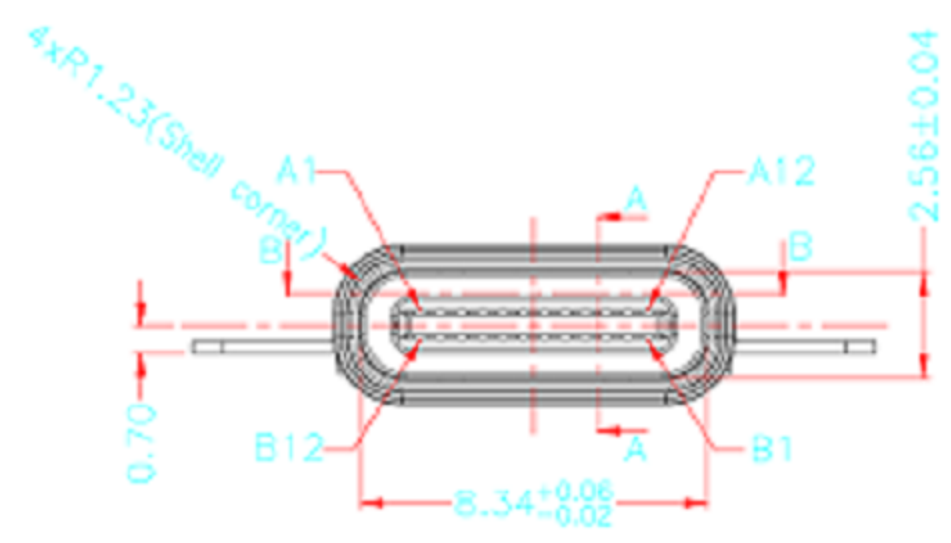


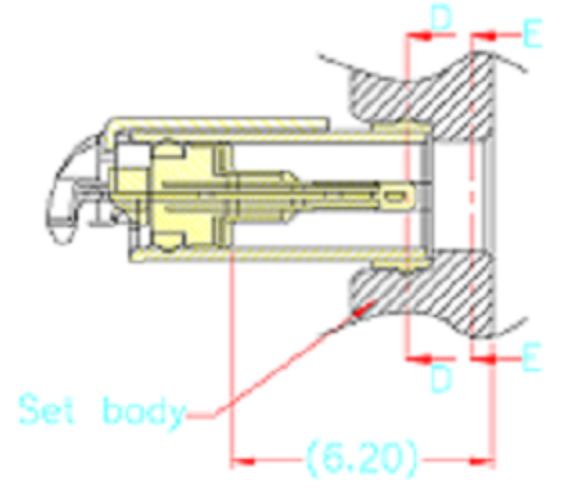
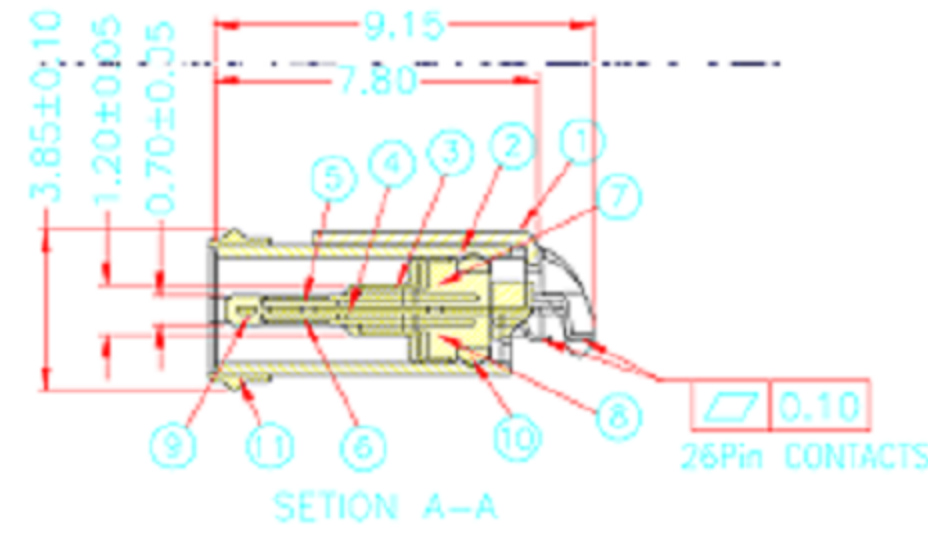
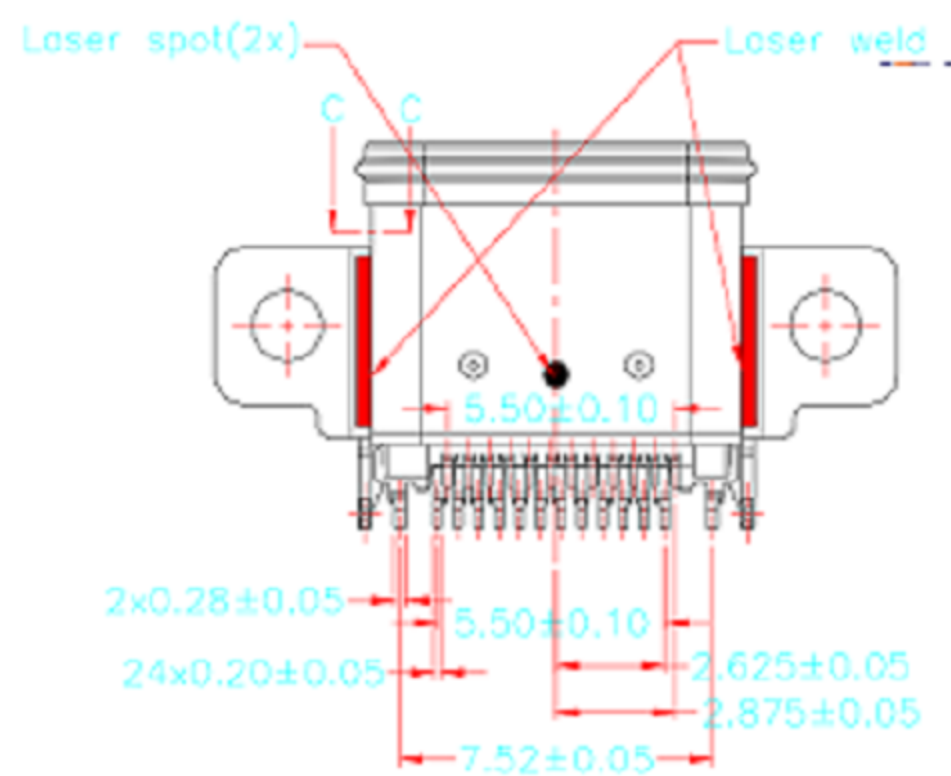
RECOMMENDED PCB LAYOUT
DEFAULT TOLERANCE: ±0.05



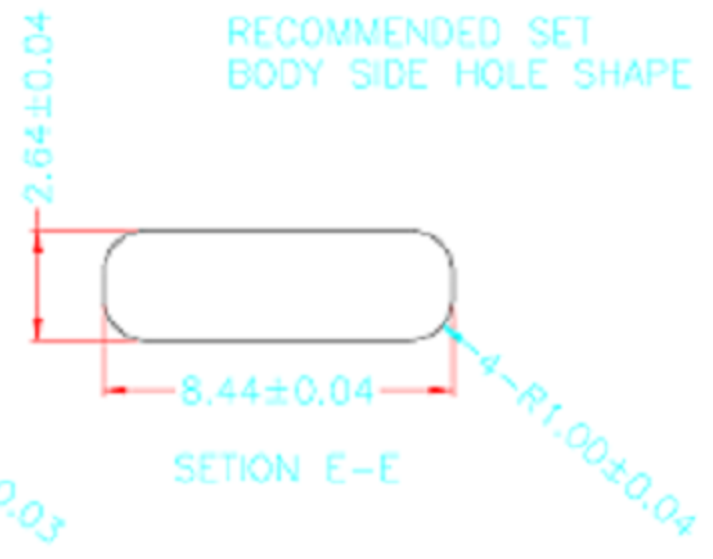
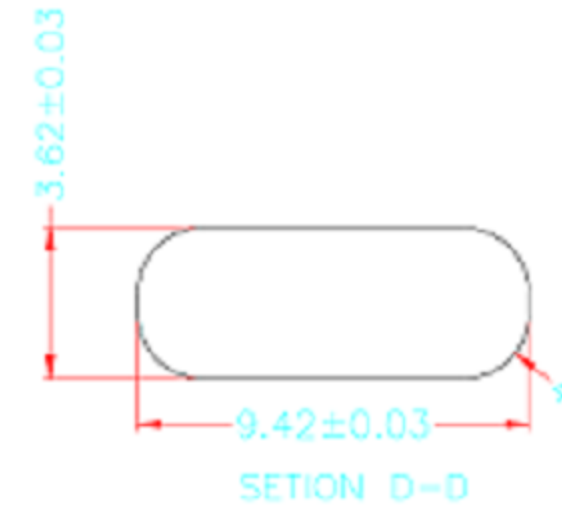
PIN DEFINITION:

A1	A2	A3	A4	A5	A6	A7	A8	A9	A10	A11	A12
GND	TX1+	TX1-	VBUS	CC1	D+	D-	SBU1	VBUS	RX2-	RX2+	GND
GND	RX1+	RX1-	VBUS	SBU2	D-	D+	CC2	VBUS	TX2-	TX2+	GND
B12	B11	B10	B9	B8	B7	B6	B5	B4	B3	B2	B1

Item	Title	Material	Dispose
1	Frame	Stainless Steel, T=0.30	Ni:40u" Min.
2	Shell	Stainless Steel, T=0.30	Ni:40u" Min.
3	GND Plate	Stainless Steel, T=0.10	None
4	Mid Plate	Stainless Steel, T=0.15	Ni 40u"Min.+Solder area:1u"Min.
5	Top Contact	Copper Alloy, T=0.12	Mating Area: Ni 80u"+Au 15u" Min.
6	Bottom Contact	Copper Alloy, T=0.12	Solder Tets: Ni 80u"+Au 1u" Min.
7	Housing A	High Temperature Plastic	UL 94V-0/Black
8	Housing B	High Temperature Plastic	UL 94V-0/Black
9	Housing C	High Temperature Plastic	UL 94V-0/Black
10	Rubber(O-ring)	Si	White or Gray
11	Rubber	Si	Black



RECOMMENDED SET BODY SIDE HOLE SHAPE



X1	TE2020-XXXX	New Drawing	LEE	2020/10/15
REV	ECH NO	DESCRIPTION	DESIGN	DATE

X ± 0.55	APPD: LEE	TITLE: USB TYPE C WATERPROOF FEMALE Mid-Mount Dual-Row SMT TYPE	PART NO:
.X ± 0.30	CHKD:		
.XX ± 0.25			
.XXX ±			
X' ± 2'	广东科斯达电子科技有限公司 6556 Guangdong Kesida Electronic Technology Co., Ltd.		
X' ± 1.5'			
UNITS: mm	SCALE: 3:1	DWG NO: CUSTOMER DRAWING	SHEET: 1 OF 1
			REV: X1