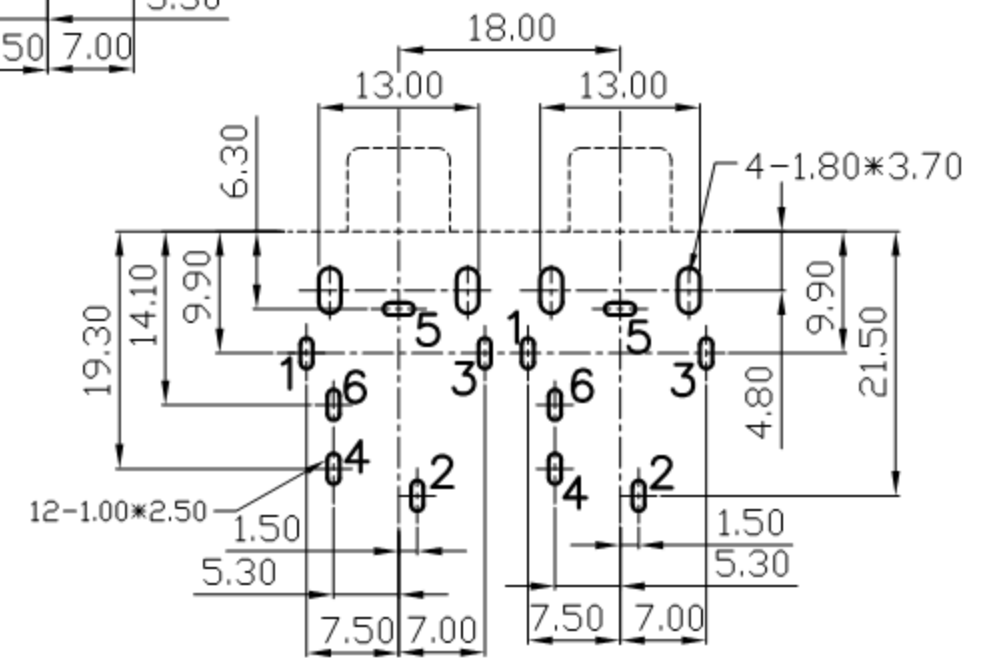
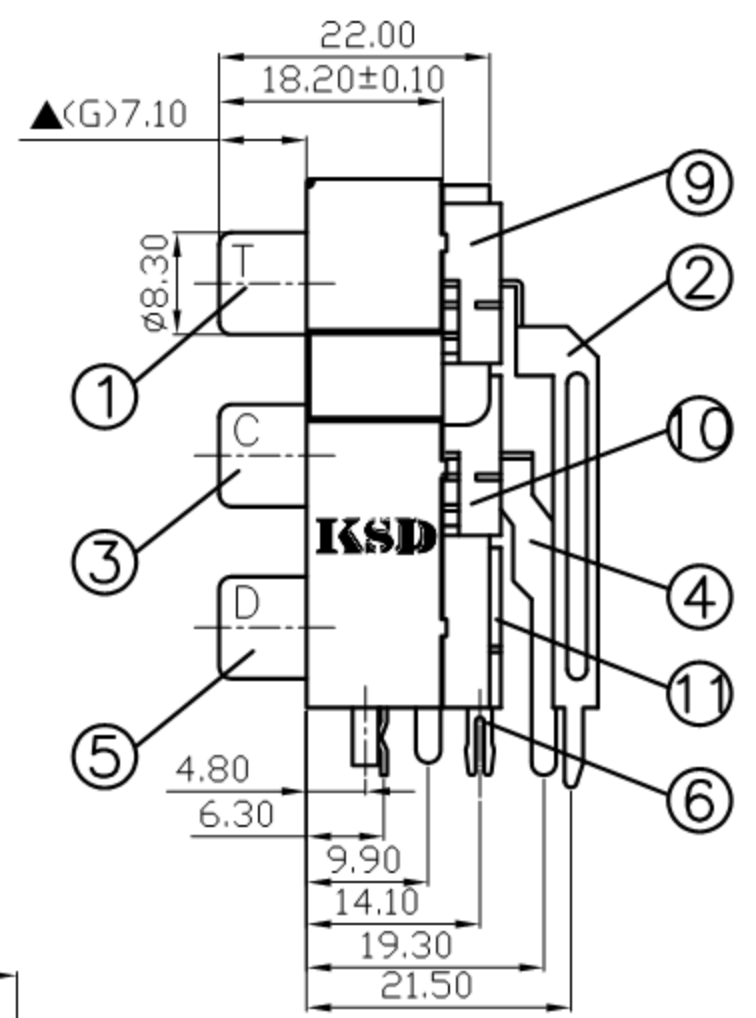
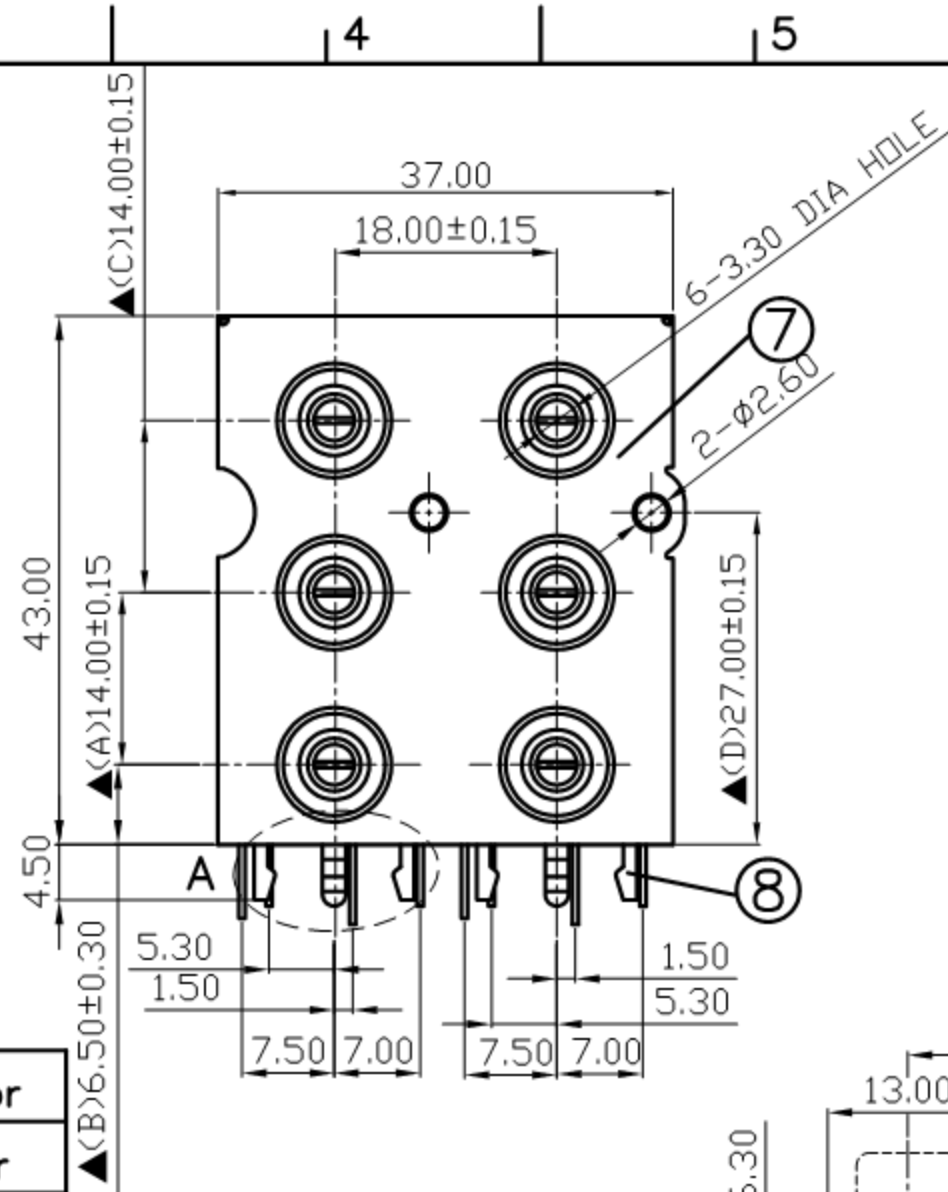


A部詳圖: (塑柱: 2/1)



Pin Hole Layout
(Jack Bottom View)

| | | | | |
|-----|--------------------|-----------------------|------|---------------|
| 11. | Housing | PBT | 2 | Yellow Color |
| 10. | Housing | PBT | 2 | White Color |
| 9. | Housing | PBT | 2 | Red Color |
| 8. | Base | ABS | 2 | Black Color |
| 7. | Panel Ground | 0.25T Stainless Steel | 1 | |
| 6. | Contact Terminal D | 0.5T Brass | 2 | Silver Plated |
| 5. | Earth Terminal D | 0.5T Brass | 2 | Nickel Plated |
| 4. | Contact Terminal C | 0.5T Brass | 2 | Silver Plated |
| 3. | Earth Terminal C | 0.5T Brass | 2 | Nickel Plated |
| 2. | Contact Terminal T | 0.5T Brass | 2 | Silver Plated |
| 1. | Earth Terminal T | 0.5T Brass | 2 | Nickel Plated |
| NO. | Description | Material | Q'TY | Finish |

| | | | | | |
|--|------------|-----|------|------|---------|
| 广东科斯达电子科技有限公司 GUANG DONG KE SI DA ELECTRONIC TECHNOLOGY CO., LTD. | DATE | DWN | CHKD | APVD | MANAGER |
| | 09.06.2006 | | | | |

| | | |
|---------------------|-------------------------------|--------------|
| PART NAME: PIN JACK | PART NUMBER: SCP655FNS234234G | VERSION: 3.0 |
|---------------------|-------------------------------|--------------|

| | | |
|--|----------|------------|
| TOLERANCE: ±0.3mm UNLESS OTHERWISE SPECIFIED | UNIT: mm | SCALE: 1/1 |
|--|----------|------------|

SPECIFICATIONS:
 Contact Resistance : 30mΩ max
 Insulation Resistance : 100MΩ min. at DC 500V
 Dielectric Withstanding Voltage: AC 500V for one minute
 Remark: ▲: The Most Important Dimension

RoHS Compliant
 For Reference 仅供参考