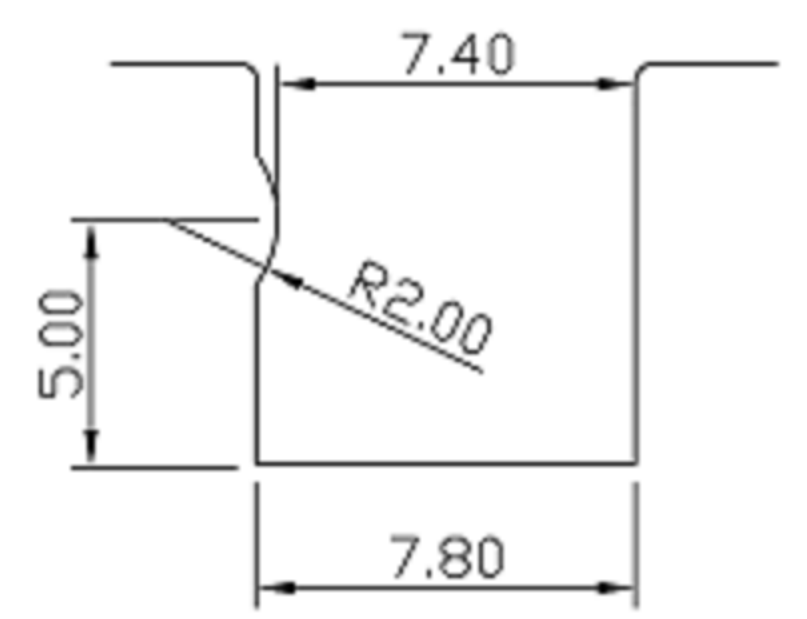
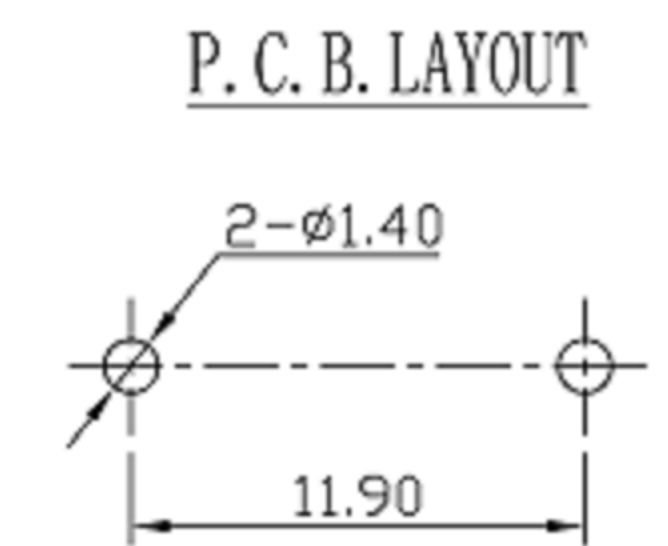


SPECIFICATIONS

Rating	DC 12V 0.1A
Contact Resistance	100mΩ Max
Insulation Resistance	50MΩ Min
Operating Force	40 ±20gf
Life	100,000 cycles



Panel cutout detail maximum panel thickness 0.8~1.0 mm



NO.	PARTS	MATERIALS	Q'TY	FINISH
E	THERMINAL	PHOSPHOR BRONZE	4	Ag PLATED
D	CONTACT SPRING	PHOSPHOR BRONZE	1	Ag PLATED
C	COVER	PA46	1	BLACK
B	CASE	PA46	1	BLACK
A	KNOB	PA46	1	BLACK

广东科斯达电子科技有限公司
 GUANG DONG KE SI DA ELECTRONIC TECHNOLOGY CO., LTD.

TOLERANCE UNLESS OTHERWISE STATED:
 Up to 5 ±0.2
 Above 5 ~ 15 ±0.3
 Above 15 ~ 30 ±0.4
 Above 30 ~ 50 ±0.5
 Angle ±0.3°

3RD. ANGEL'S

UNITS MM

DRAWN BY:	DATE	MAT'L	TITLE	SWITCH
Jack Lu	09/26/13	FINISH	MODLE	DETECTOR SWITCH
CHECKED BY:	DATE	SCALE	DWG NO.	KSD-RS-PB238L
Jacky Chen	09/26/13	SHEET NO.	PART NO.	
APPROVED BY:	DATE			
Tony Kao	09/26/13			

ITEM NO.	DESCRIPTION	DRAWN	DATE