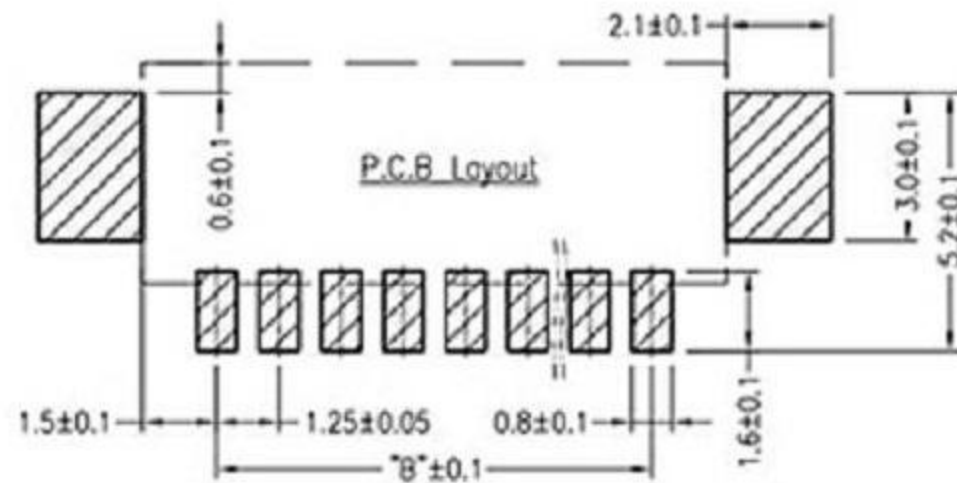
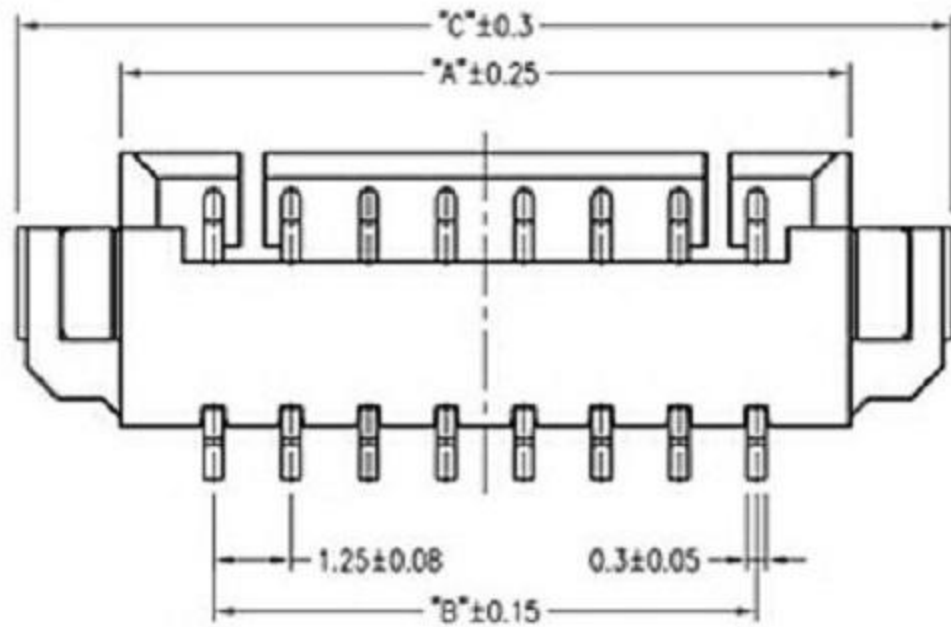


**SPECIFICATIONS**

Current rating : 2.0A AC , DC  
 Voltage rating : 100V AC , DC  
 Temperature rating : -25°C ~ +85°C  
 Insulation resistance : 1,000MΩ min.  
 Withstand voltage : 800V AC/minute  
 Contact resistance : 20mΩ/Max  
 Material:  
 Housing : Nylon 66, UL94V-2  
 Pin : Brass / Tin-plated  
 Contact : Phosphor Bronze

Poles	DIM.A	DIM.B	DIM.C
2A	4.25	1.25	7.55
3A	5.50	2.50	8.80
4A	6.75	3.75	10.05
5A	8.00	5.00	11.30
6A	9.25	6.25	12.55
7A	10.50	7.50	13.80
8A	11.75	8.75	15.05
9A	13.00	10.00	16.30
10A	14.25	11.25	17.55
11A	15.50	12.50	18.80
12A	16.75	13.75	20.05
13A	18.00	15.00	21.30
14A	19.25	16.25	22.55
15A	20.50	17.50	23.80
16A	21.75	18.75	25.05



**廣東科斯達電子科技有限公司**

TOLERANCE UNLESS OTHERWISE STATED:  
 Up to 5 ±0.2  
 Above 5 ~ 15 ±0.3  
 Above 15 ~ 30 ±0.4  
 Above 30 ~ 50 ±0.5  
 Angle ±0.3

3RD. ANGEL'S



UNITS MM

DRAWN BY:	DATE	MAT'L	TITLE	CONNECTOR
Jack Lu	11/13/12			
CHECKED BY:	DATE	FINISH	MODLE	
Jacky Chen	11/13/12			
APPROVED BY:	DATE	SCALE	DWG NO.	SIZE
Tony Kao	11/13/12	1 : 1		A4
		SHEET NO.	PART NO.	VER
		1 of 1		R

ITEM NO.	DESCRIPTION	DRAWN	DATE