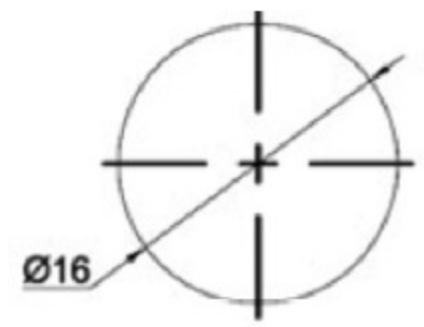
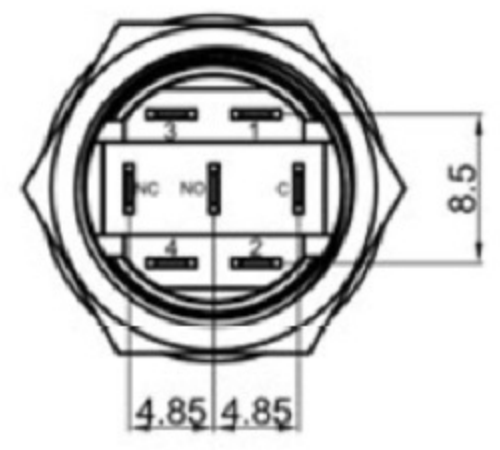
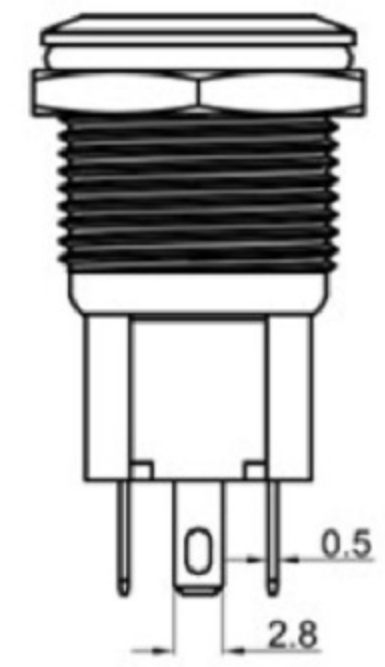
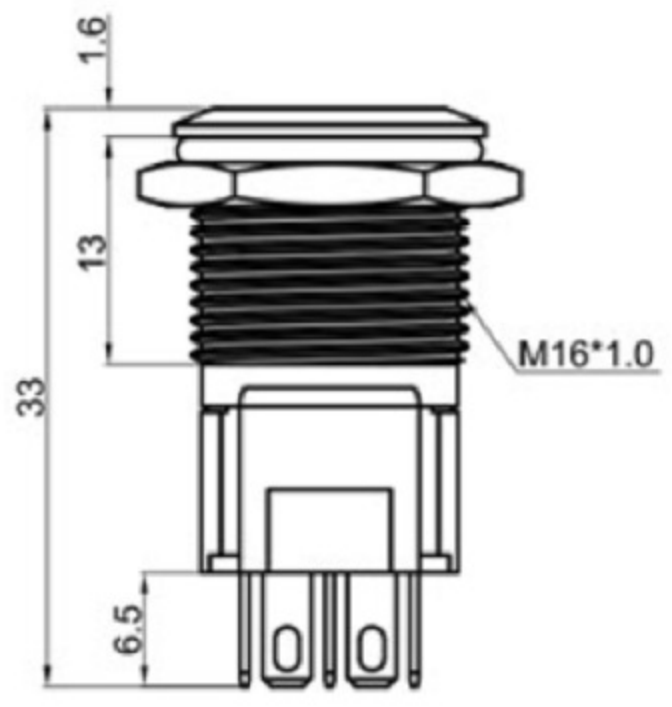
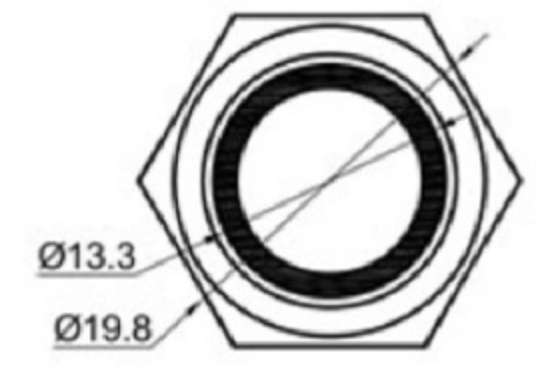


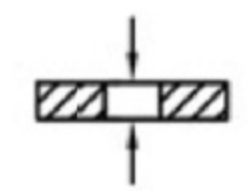
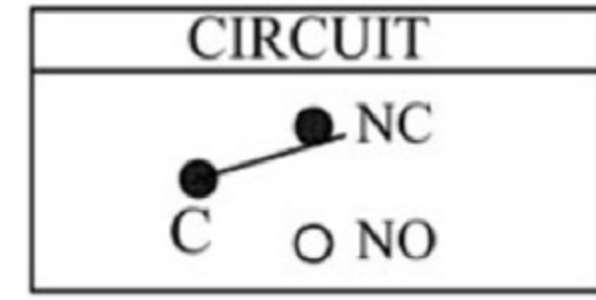


Switch Specifications

Rating: 3A 250VAC ;
 2A 36VDC ;
 Degree of protection: IP65 ;
 Contact Resistance: 50mΩ Max. ;
 Dielectric Strength: 1000VAC For 1 minute ;
 Total Travel: 3.0± 0.5mm ;
 Operating Force: 450± 150gf ;
 Mechanical Life: 200,000 cycles ;
 Load Life: 50,000 cycles ;
 Operating Temperature: -20° C ~ 70° C ;
 Function: LOCK



CUT-OUT



Panel Thickness: 6mm MAX.

LED Specifications



RGB	红色	1.8	2.0	2.4	15
	绿色	2.8	3.0	3.6	15
	蓝色	2.8	3.0	3.6	15
灯发光颜色 X Emitted color X	最小	一般	最大	额定 电流 (mA)	
	顺向电压(V)				

广东科斯达电子科技有限公司
 GUANG DONG KE SI DA ELECTRONIC TECHNOLOGY CO., LTD.

TOLERANCE UNLESS OTHERWISE STATED :
 Up to 5 ±0.2
 Above 5 ~ 15 ±0.3
 Above 15 ~ 30 ±0.4
 Above 30 ~ 50 ±0.5
 Angle ±0.3

3RD. ANGEL'S

UNITS MM

DRAWN BY:	DATE	MATL	TITLE	SWITCH
Jack Lu	12/27/22			
CHECKED BY:	DATE	FINISH	MODLE	TACT SWITCH WITH LED
Jacky Chen	12/27/22			
APPROVED BY:	DATE	SCALE	DWG NO.	SIZE
Tony Kao	12/27/22	1 : 1		A4
		SHEET NO.	PART NO.	VER
		1 of 1		R

ITEM NO.	DESCRIPTION	DRAWN	DATE