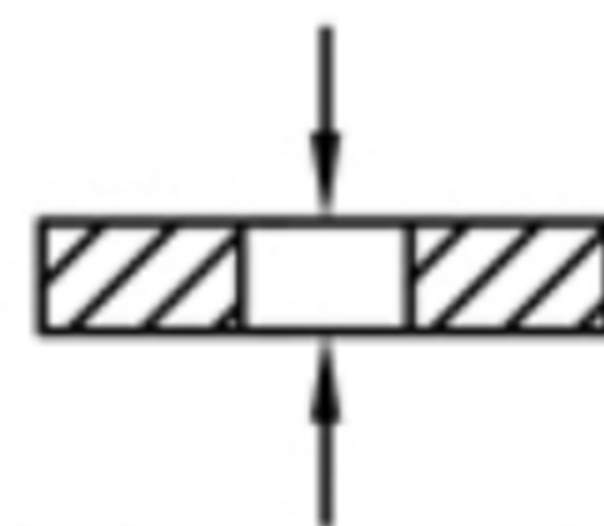
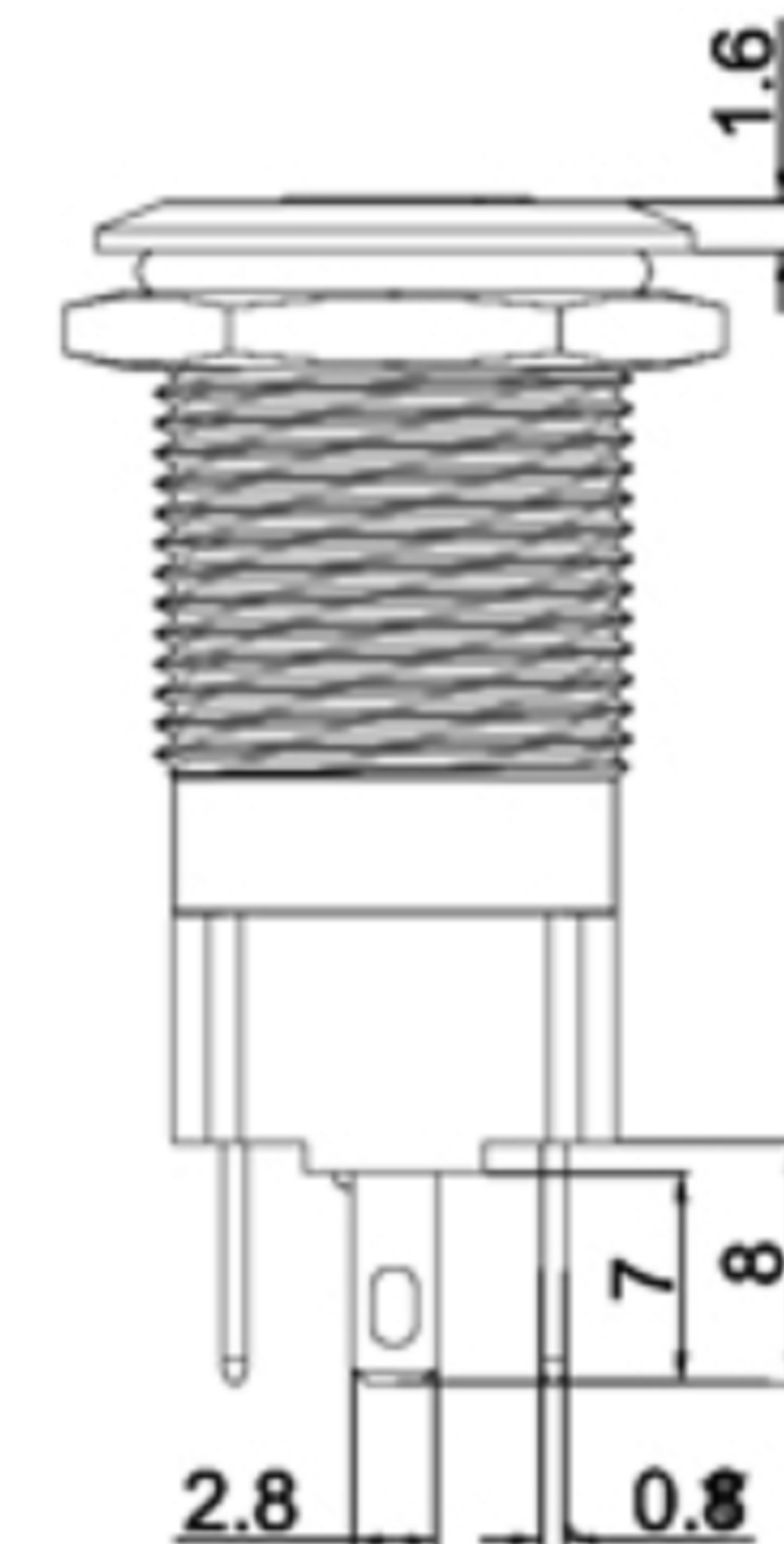
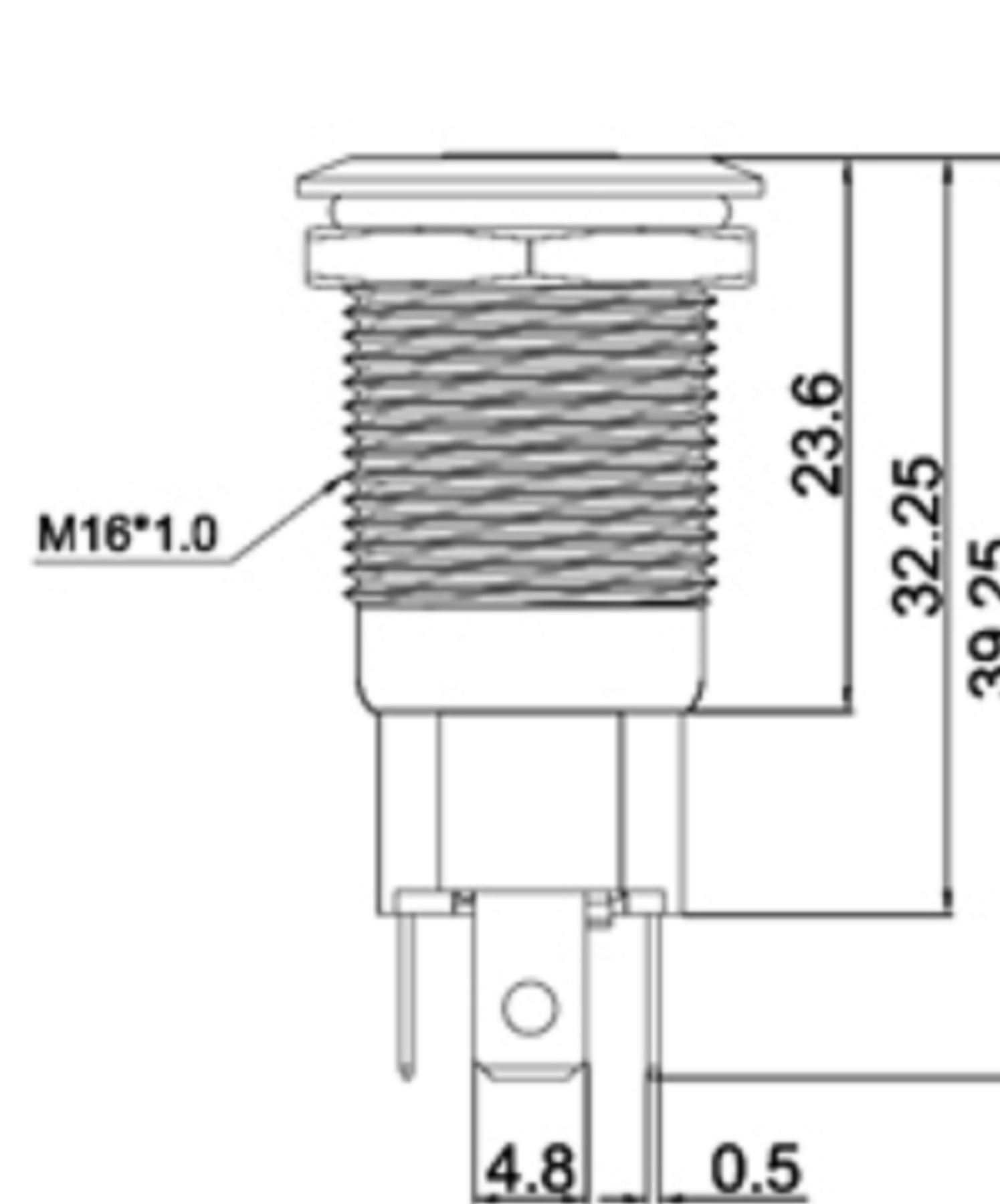
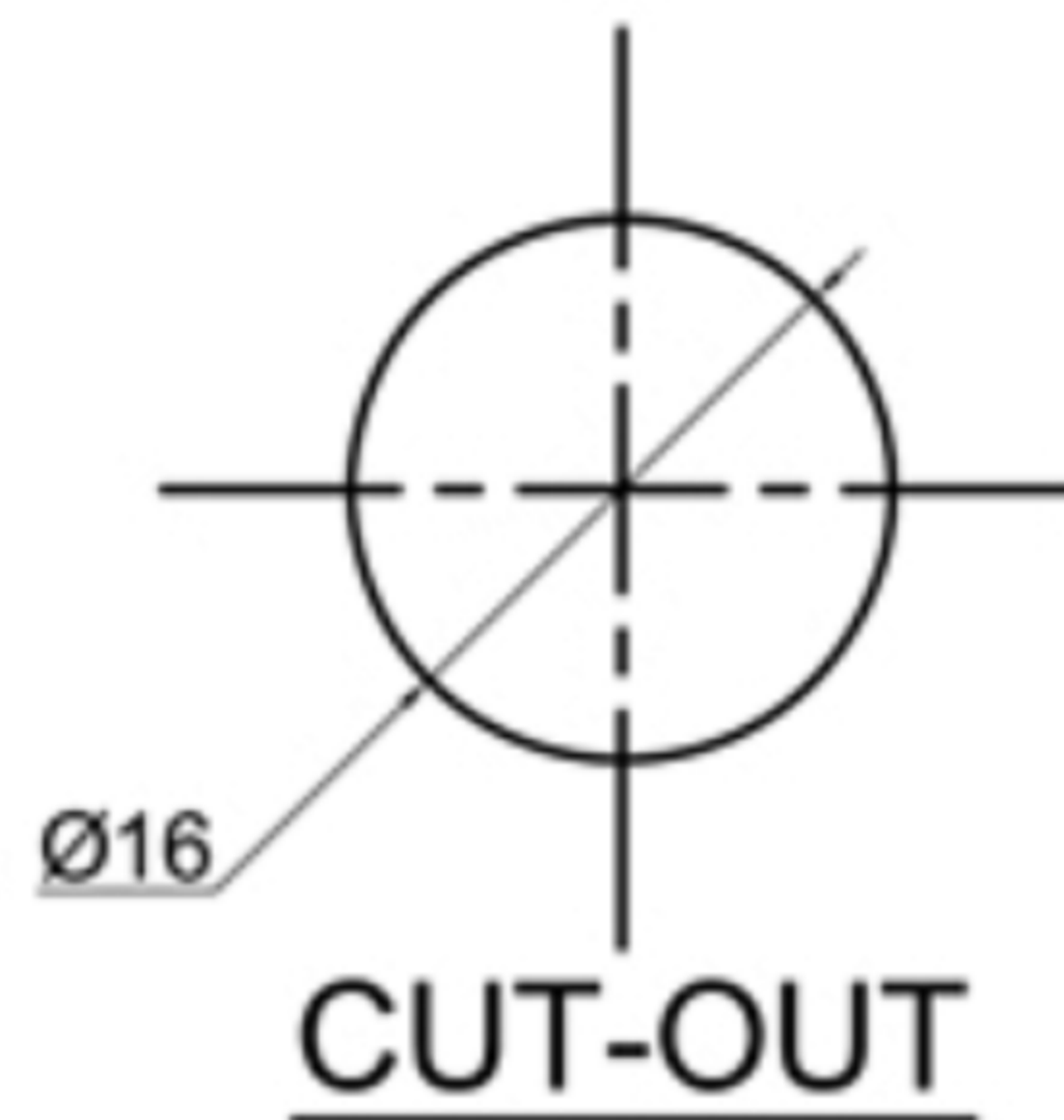
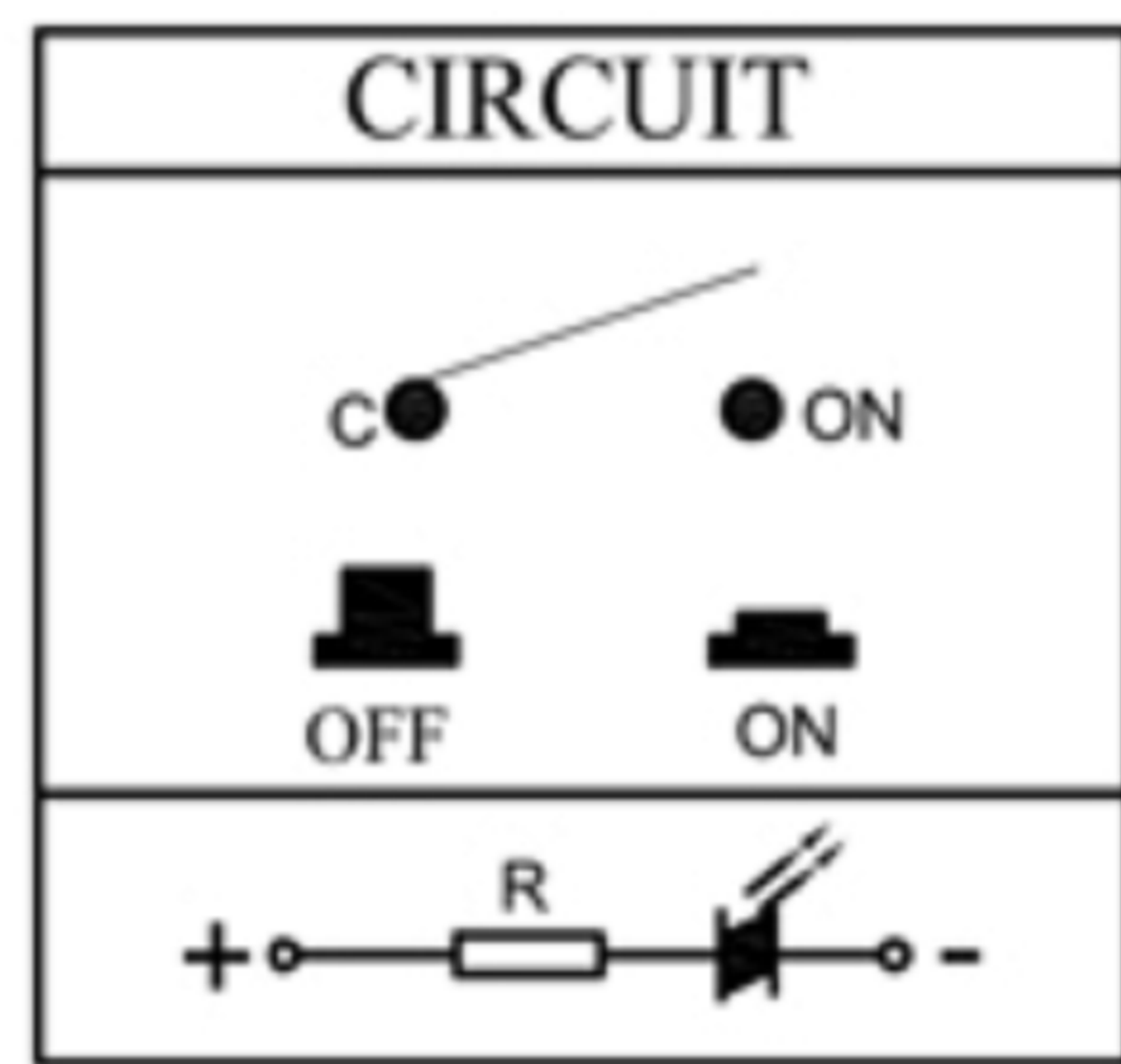
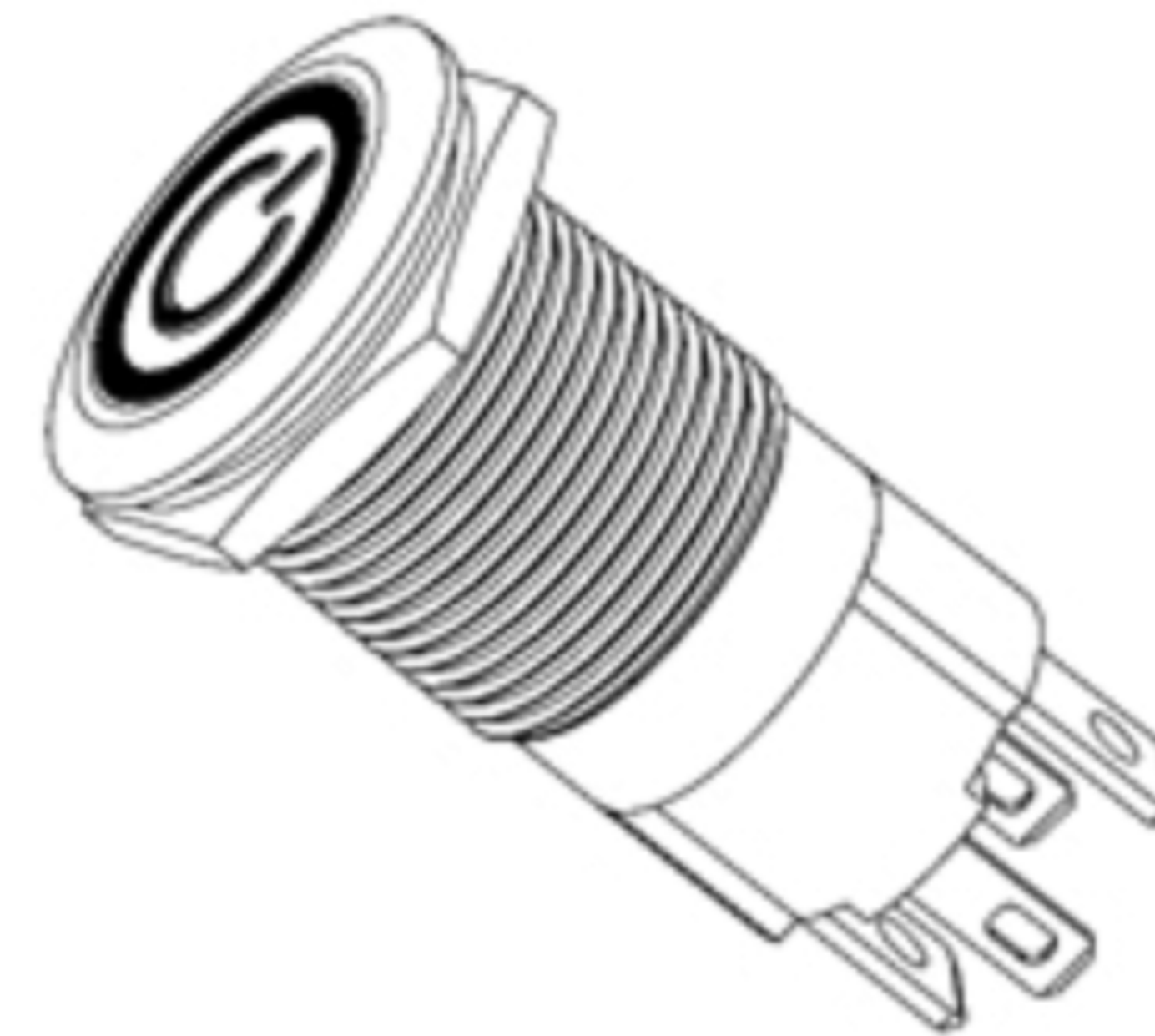




# SPECIFICATIONS

Rating: 10A 250VACmax;  
 Degree of protection: IP67;  
 Contact Resistance: 50mΩ Max. ;  
 Dielectric Strength: 1500VAC For 1 minute ;  
 Total Travel: 3± 0.5mm ;  
 Operating Force: 600± 200gf ;  
 Mechanical Life: 30,000 cycles ;  
 Load Life: 10,000 cycles ;  
 Operating Temperature: -20° C~70° C ;  
 Function: LOCK



Panel Thickness: 10mm MAX.


**广东科斯达电子科技有限公司**  
 GUANG DONG KE SI DA ELECTRONIC TECHNOLOGY CO., LTD.

TOLERANCE UNLESS OTHERWISE STATED: Up to 5 ±0.2, Above 5 ~ 15 ±0.3, Above 15 ~ 30 ±0.4, Above 30 ~ 50 ±0.5, Angle ±0.3  
 3RD. ANGEL'S  
 UNITS MM

DRAWN BY:	DATE	MAT'L	TITLE	SWITCH
Jack Lu	12/27/22			
CHECKED BY:	DATE	FINISH	MODLE	TACT SWITCH WITH LED
Jacky Chen	12/27/22			
APPROVED BY:	DATE	SCALE	DWG NO.	SIZE
Tony Kao	12/27/22	1 : 1		A4
		SHEET NO.	PART NO.	VER
		1 of 1		R