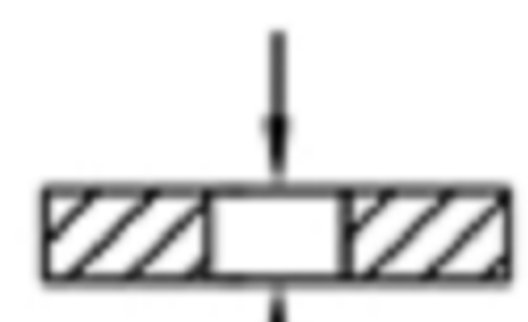
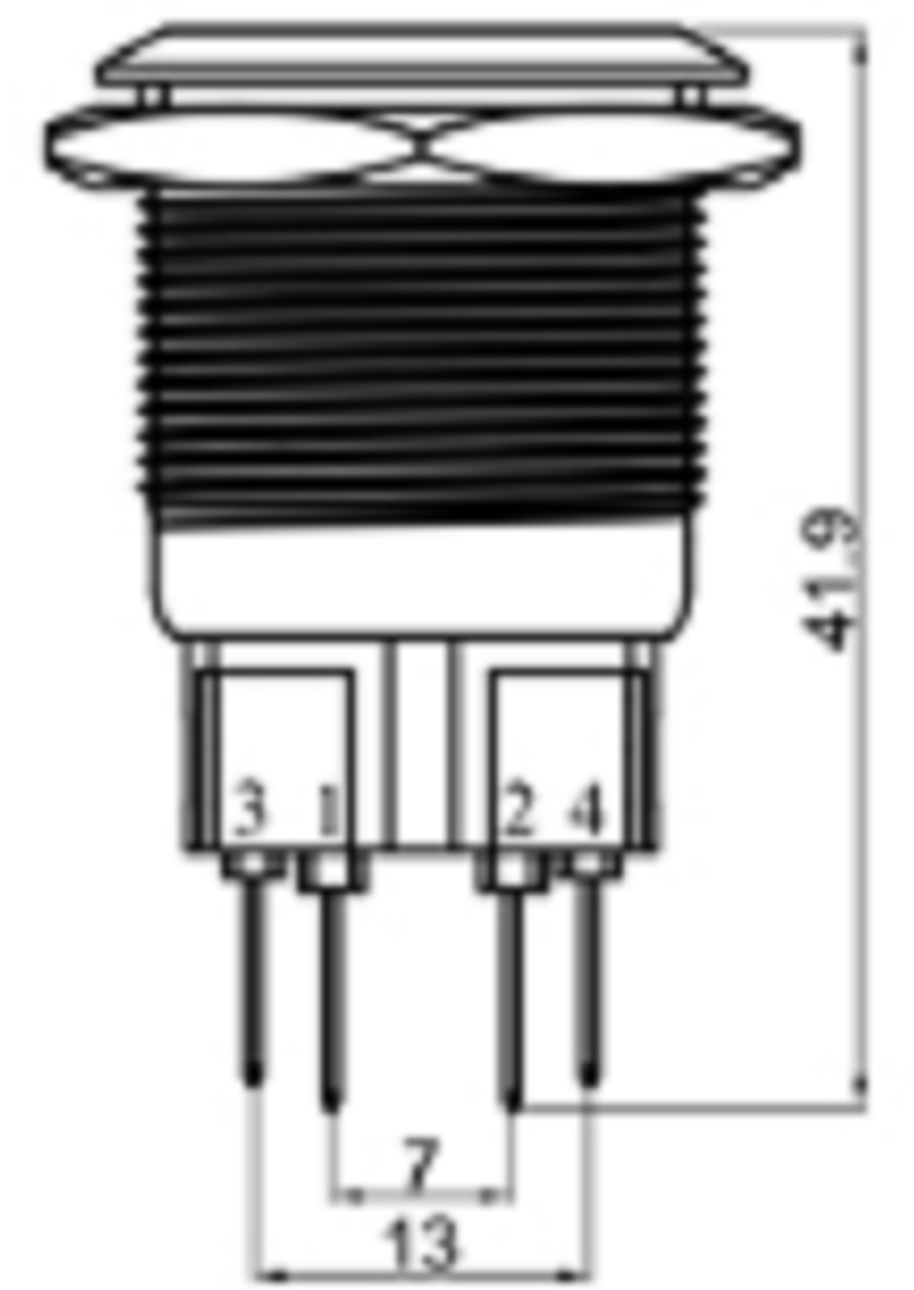
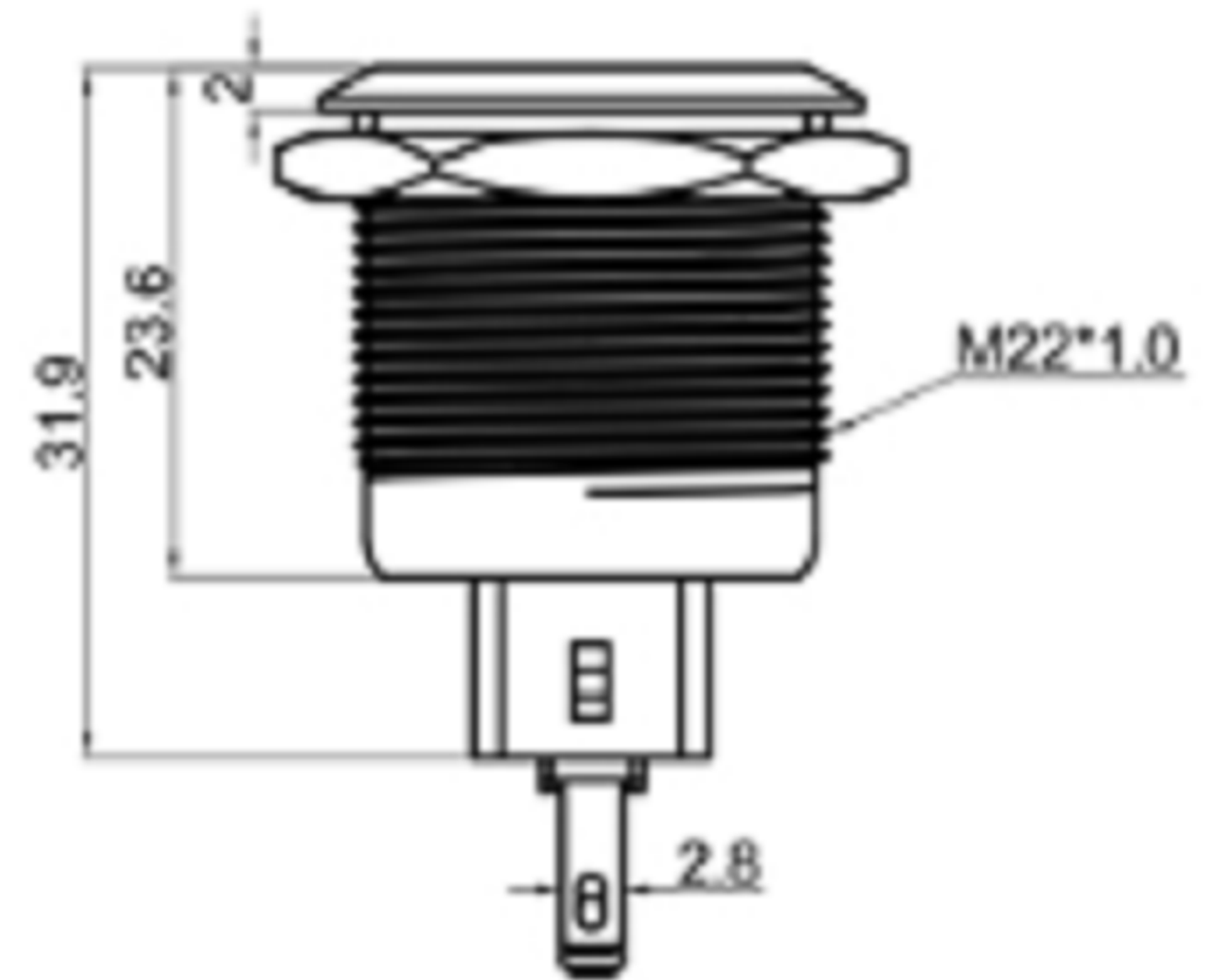
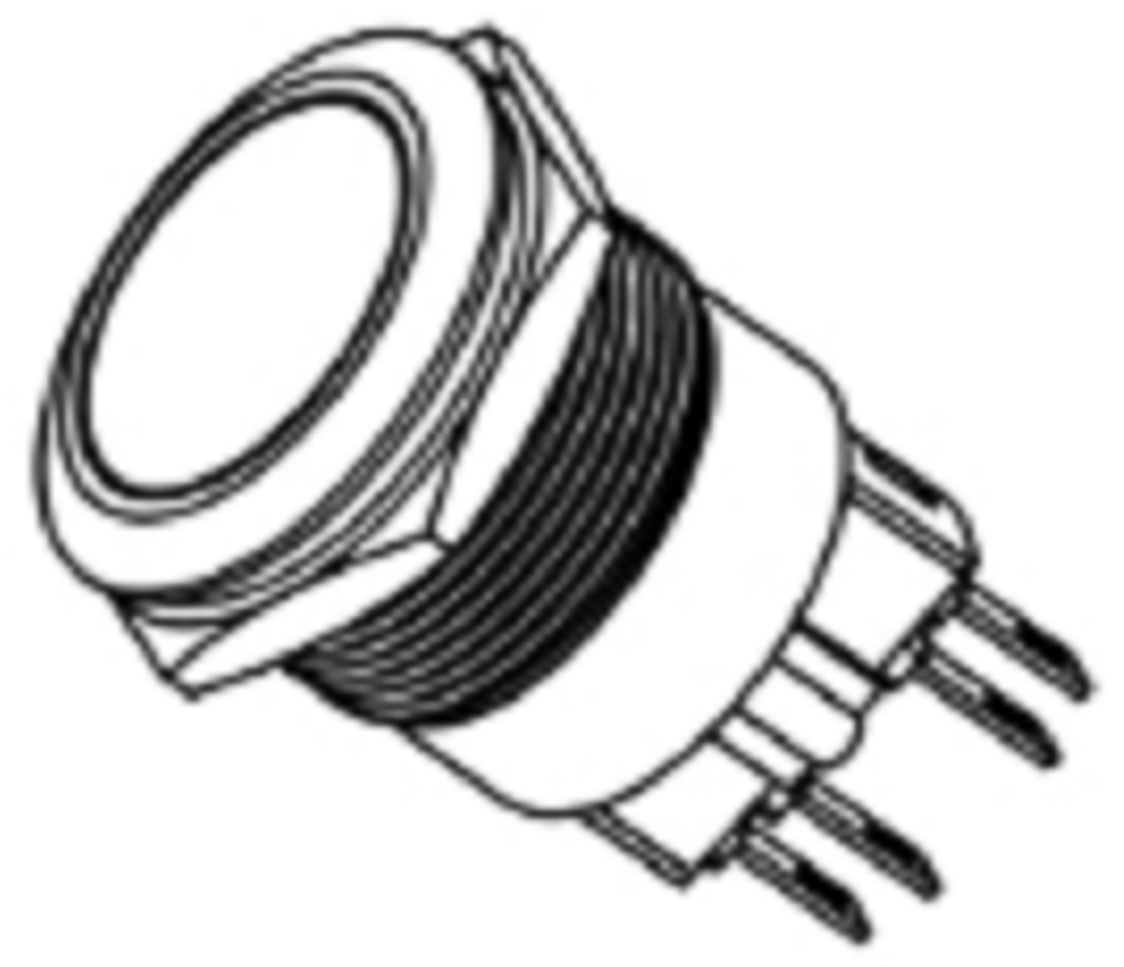
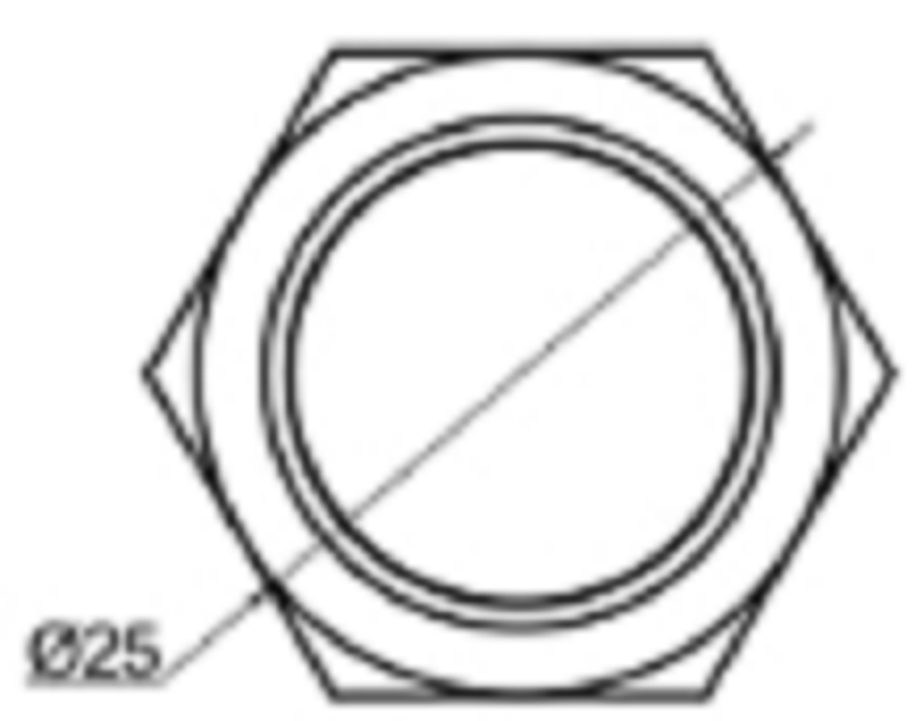




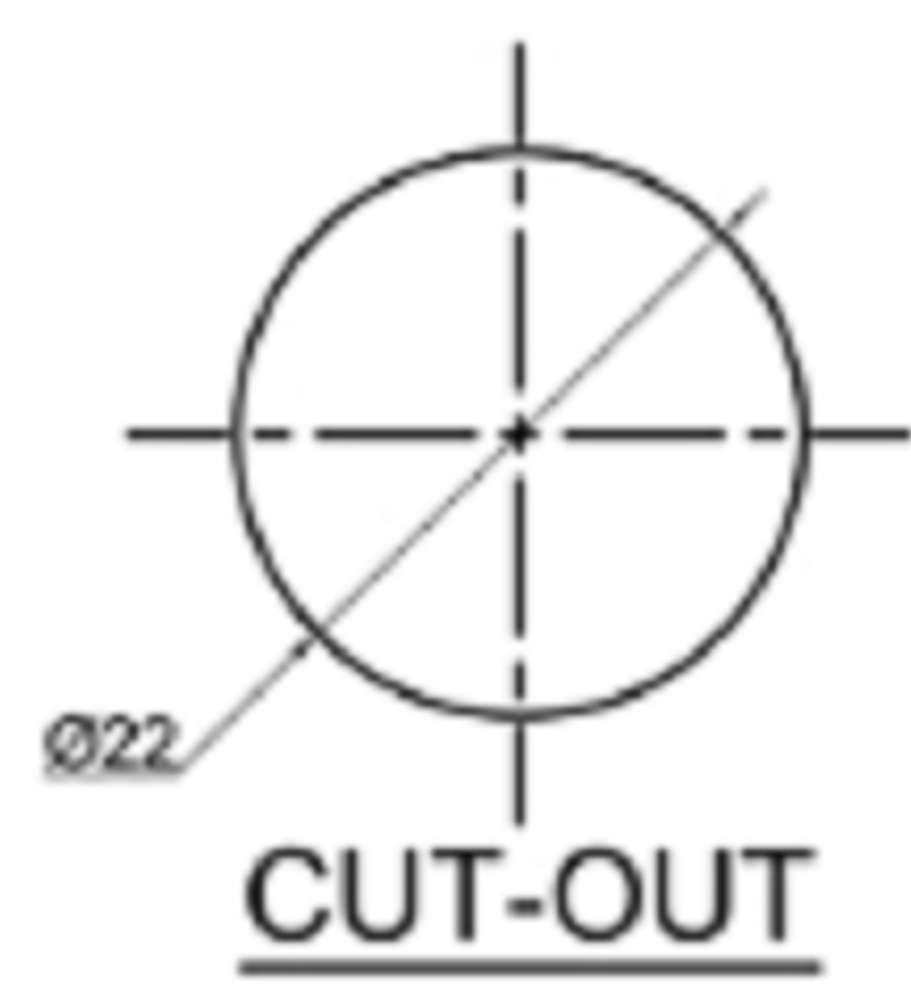
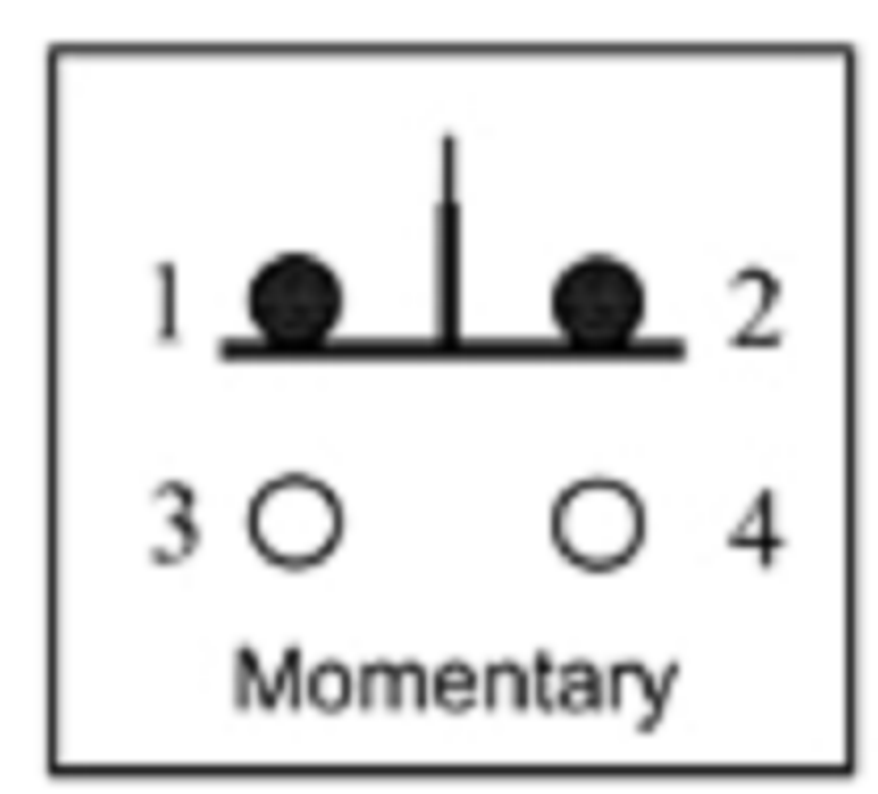
### Switch Specifications

Rating: 5A 250VAC ;  
2A 36VDC ;

Degree of protection: IP67;  
Contact Resistance: 50mΩ Max. ;  
Dielectric Strength: 1000VAC For 1 minute ;  
Total Travel: 2.8±0.5mm ;  
Operating Force: 600±200gf ;  
Mechanical Life: 200,000 cycles ;  
Load Life: 50,000 cycles ;  
Operating Temperature: -20° C ~ 85° C ;  
Function: OFF-(ON)



Panel Thickness: 10mm MAX.



 **广东科斯达电子科技有限公司**  
GUANG DONG KE SI DA ELECTRONIC TECHNOLOGY CO., LTD.

TOLERANCE UNLESS OTHERWISE STATED:  
Up to 5 ±0.2  
Above 5 ~ 15 ±0.3  
Above 15 ~ 30 ±0.4  
Above 30 ~ 50 ±0.5  
Angle ±0.3

3RD. ANGEL'S

UNITS MM

DRAWN BY:	DATE	MAT'L	TITLE	SWITCH
Jack Lu	12/27/22			
CHECKED BY:	DATE	FINISH	MODLE	TACT SWITCH WITH LED
Jacky Chen	12/27/22			
APPROVED BY:	DATE	SCALE	DWG NO.	SIZE
Tony Kao	12/27/22	1 : 1		A4
		SHEET NO.	PART NO.	VER
		1 of 1		R

ITEM NO.	DESCRIPTION	DRAWN	DATE