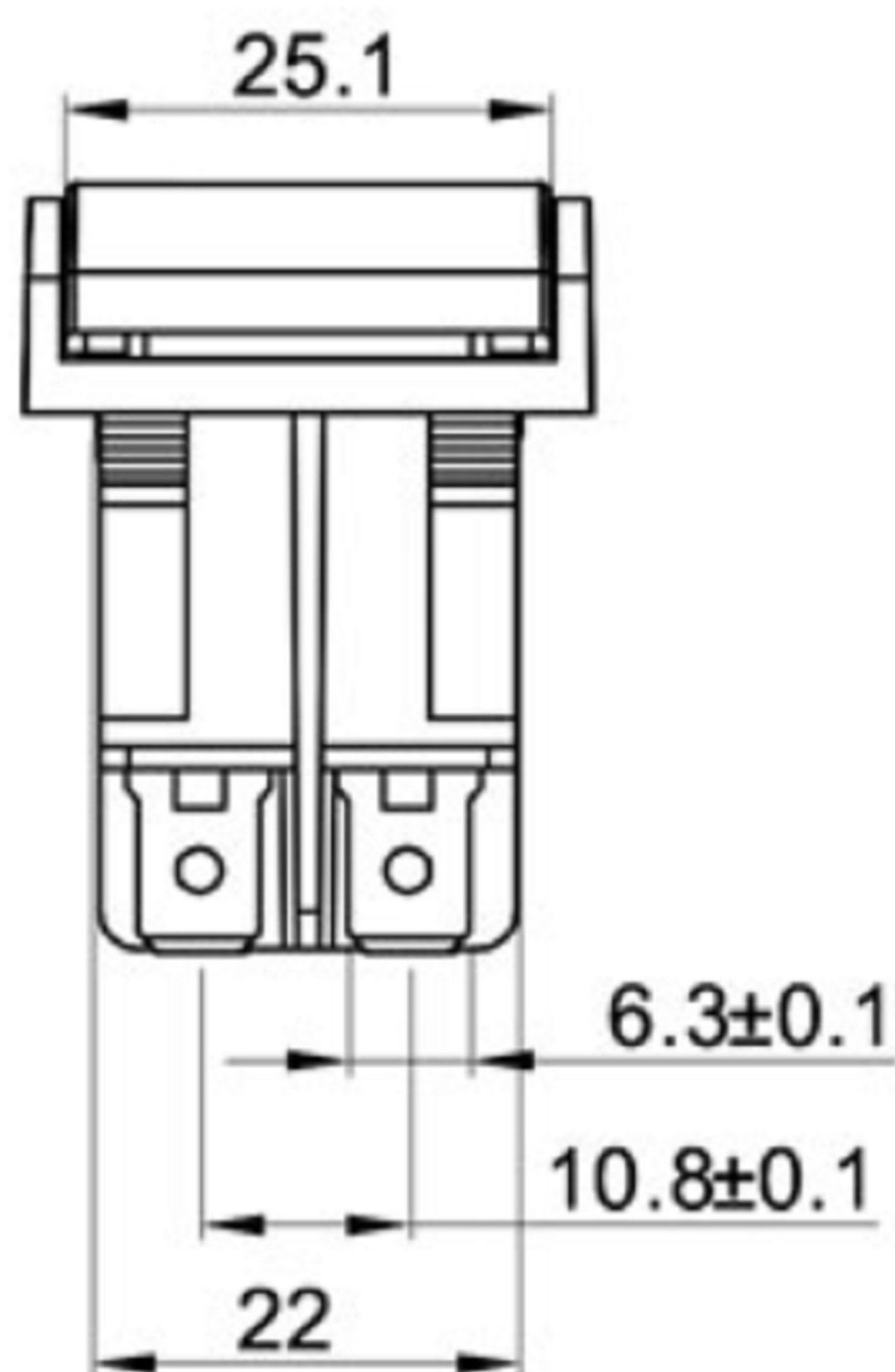
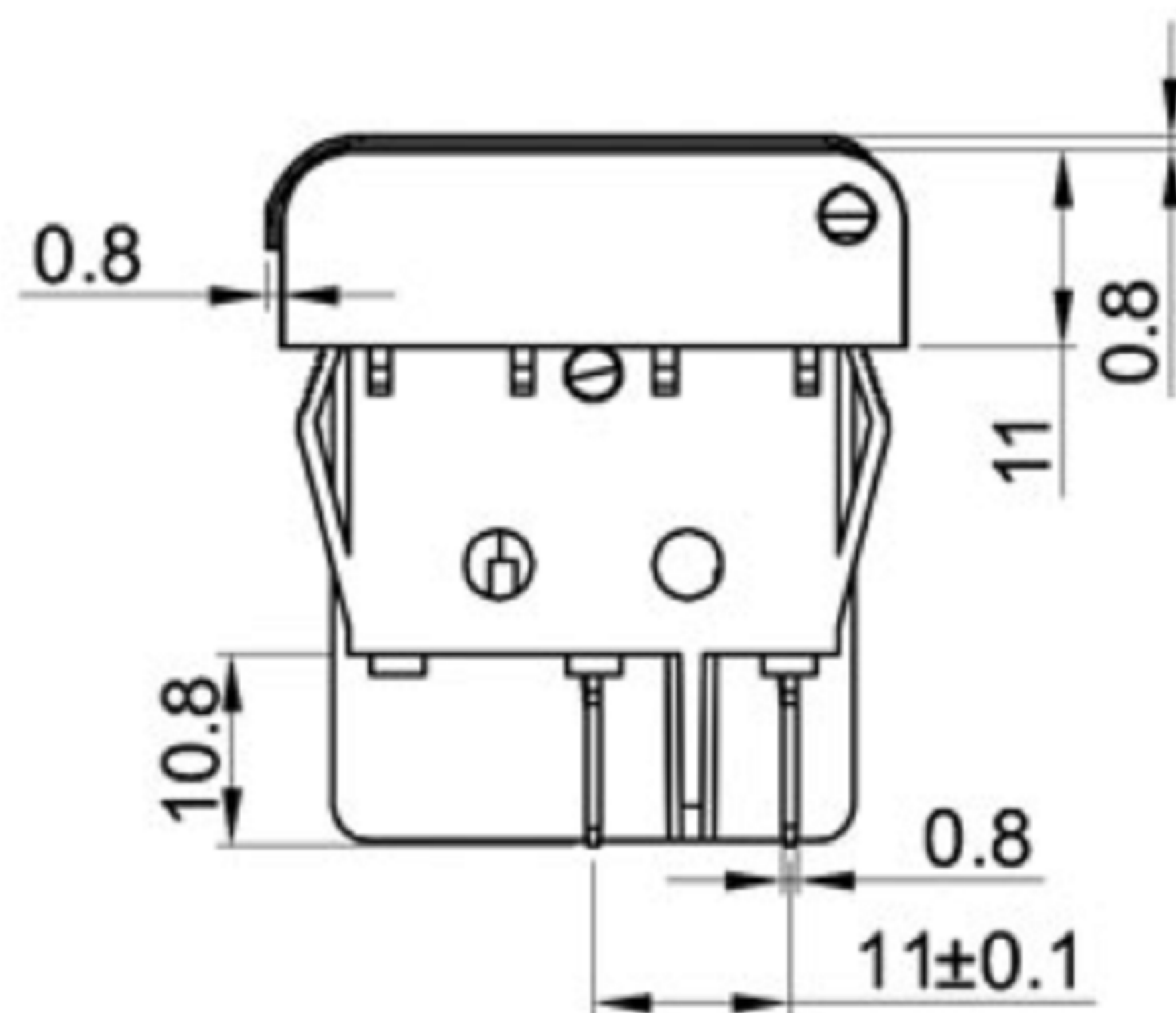
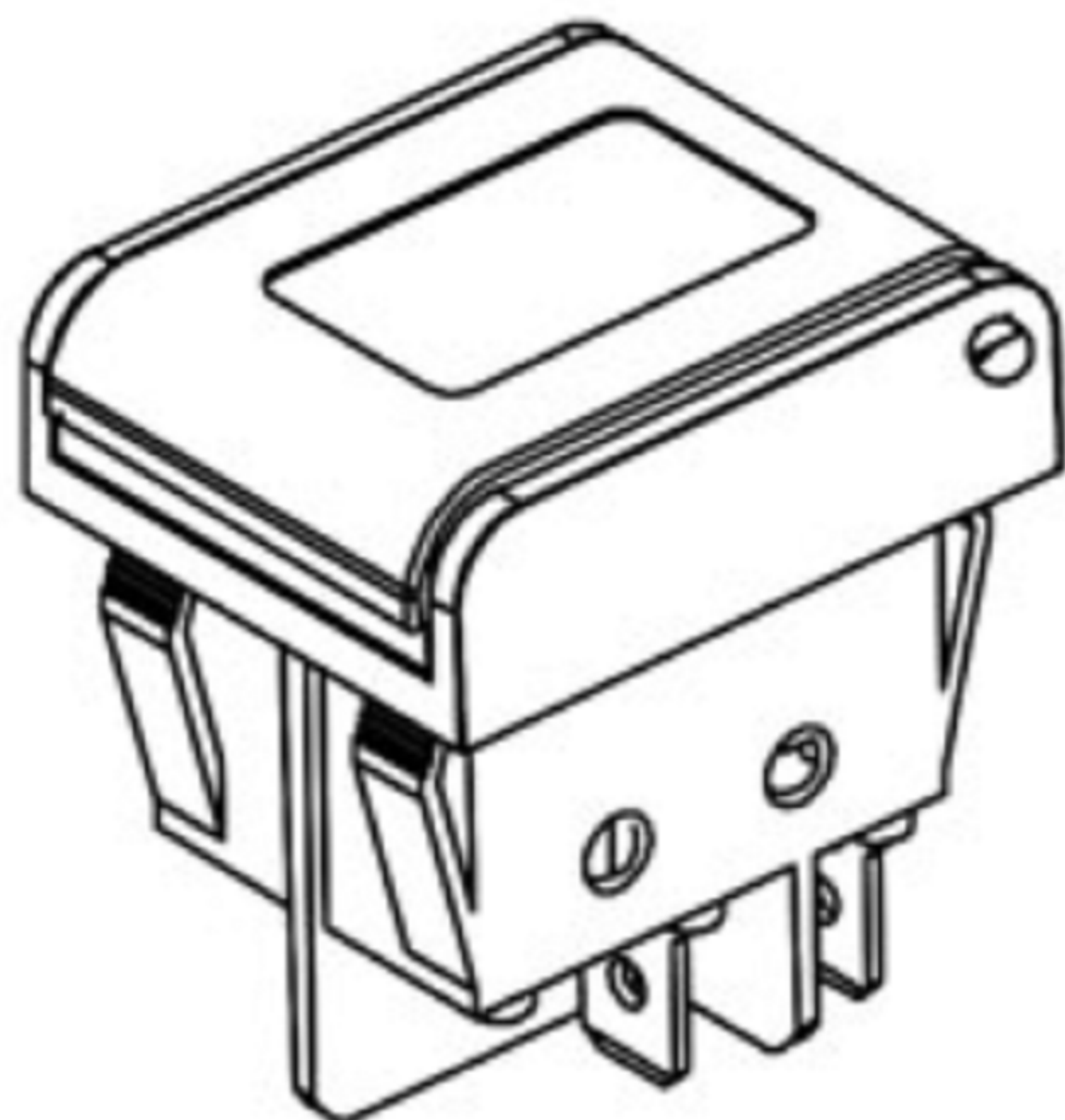


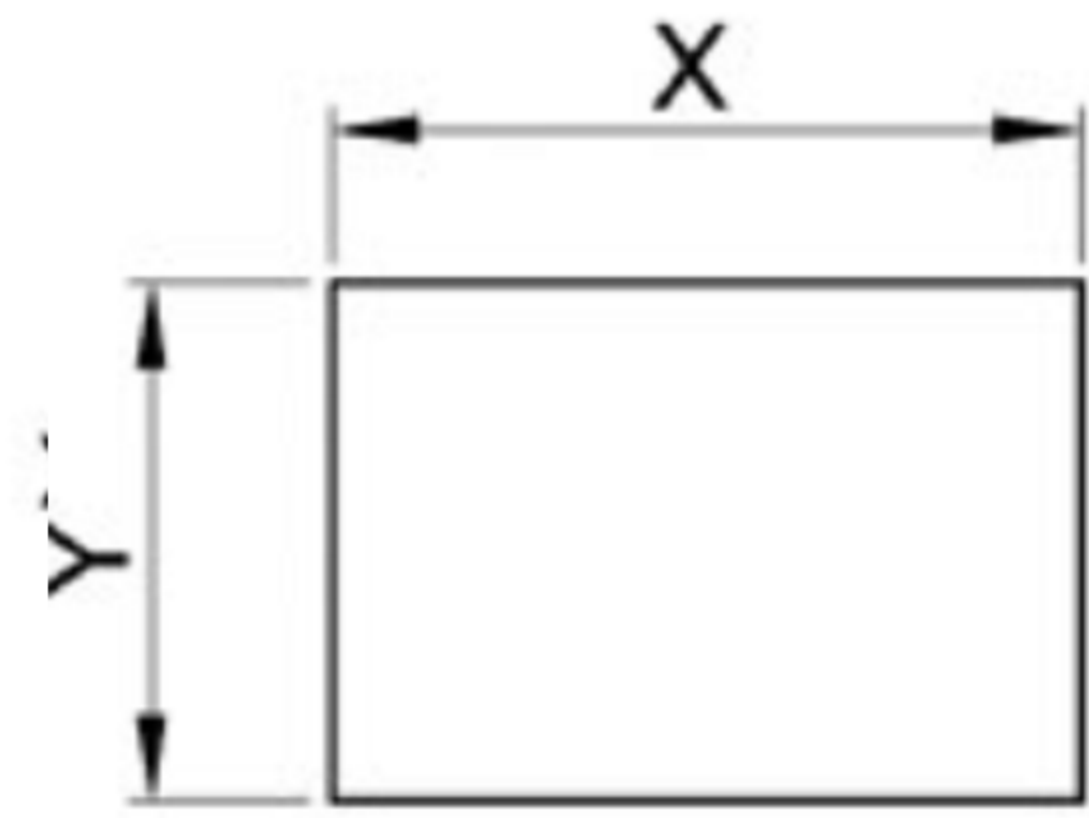


Rating: 20A 125V AC (UL CUL)
 22A 250V AC (ENEC CB CQC)

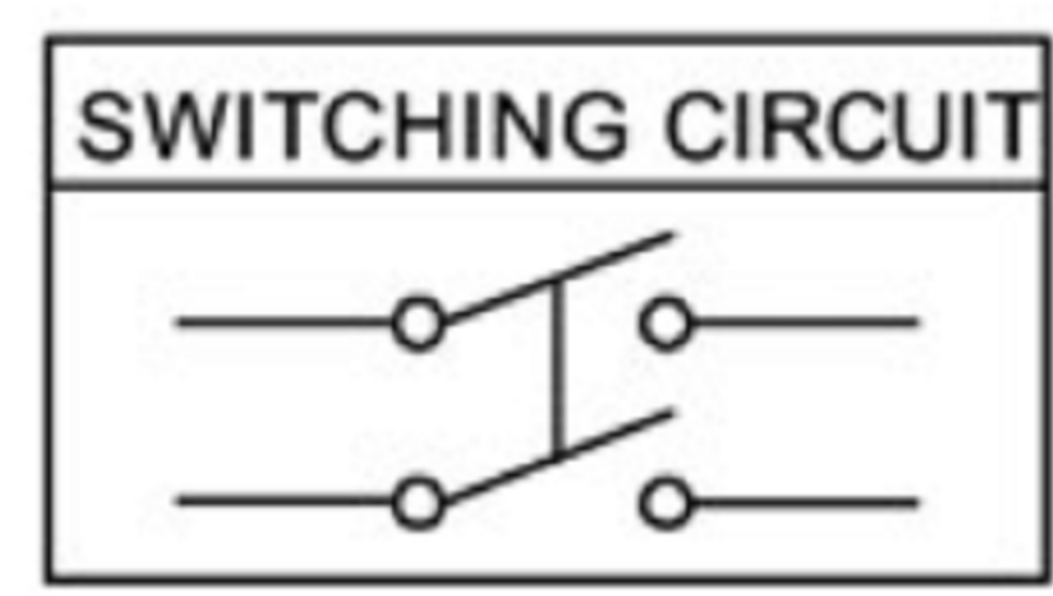
Contact Resistance: 50mΩ Max
 Insulation Resistance: DC 500V 100MΩ Min.
 Dielectric Strength: AC1500V 1 minute
 Operating Force: 350±50gf
 Mechanical Life: Over 30,000 cycles
 Electrical Life: Over 10,000 cycles
 Operating Temperature: 0~85°C
 Safety Approval:



CUT-OUT



| | X | Y |
|-----------|----------|-----------|
| 0.75~1.25 | 30.0+0.1 | 122.0+0.1 |
| 1.25~2.00 | 30.2+0.1 | 122.0+0.1 |
| 2.00~3.00 | 30.4+0.1 | 122.0+0.1 |



广东科斯达电子科技有限公司
 GUANG DONG KE SI DA ELECTRONIC TECHNOLOGY CO., LTD.

TOLERANCE UNLESS OTHERWISE STATED:
 Up to 5 ±0.2
 Above 5 ~ 15 ±0.3
 Above 15 ~ 30 ±0.4
 Above 30 ~ 50 ±0.5
 Angle ±0.3

3RD. ANGEL'S

UNITS MM

| | | | | |
|--------------|----------|-----------|----------|----------------------|
| DRAWN BY: | DATE | MAT'L | TITLE | SWITCH |
| Jack Lu | 12/27/22 | | MODLE | TACT SWITCH WITH LED |
| CHECKED BY: | DATE | FINISH | DWG NO. | |
| Jacky Chen | 12/27/22 | | PART NO. | |
| APPROVED BY: | DATE | SCALE | 1 of 1 | |
| Tony Kao | 12/27/22 | SHEET NO. | | |

| ITEM NO. | DESCRIPTION | DRAWN | DATE |
|----------|-------------|-------|------|
| | | | |