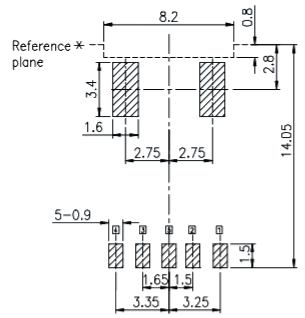
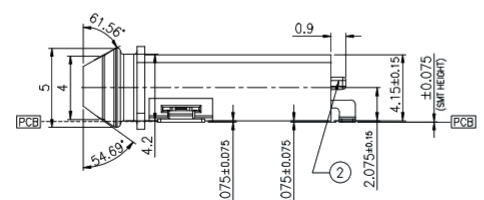
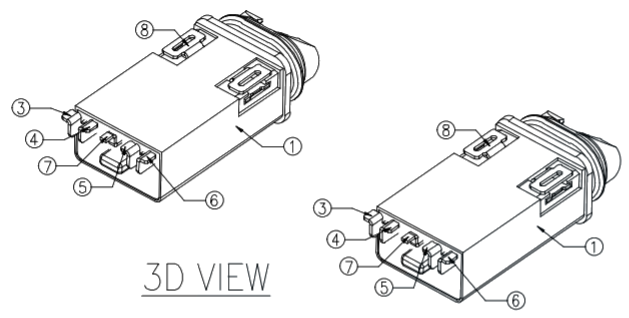
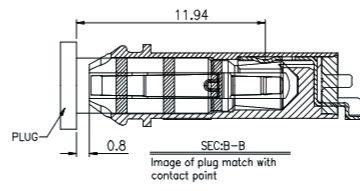
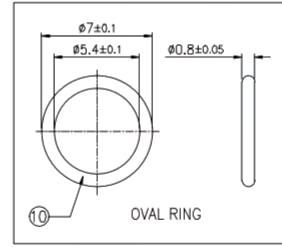


ZONE	SYMBOL	REVISION	APPROVAL	DATE
A		INITIAL	Lucky	06/20/20'



IP-X7
30min/1m

- SPECIFICATIONS:
- INSULATION RESISTANCE: A VOLTAGE OF 500V D.C. SHALL BE APPLIED TO THE TERMINALS, AFTER WHICH MEASUREMENT SHALL BE MADE. A GAUGE FOR THE MEASUREMENT SHALL BE USED THE INSULATED GAUGE.
 - CONTACT RESISTANCE: 30mΩ OR LESS
 - VOLTAGE PROOF: 500V AC FOR ONE MINUTE
 - DURABILITY: 10,000 INSERTION/REMOVAL CYCLES (MINIMUM)
 - INSETION FORCE: 0.4KGF~2.0KGF
 - WITHDRAWAL FORCE: 0.4KGF~2.0KGF
 - WATER PROOFNESS: THIS PRODUCT IS CONFORM TO JIS STANDARD IPX7 BY WATERPROOF JACK
 - USING PLUG: Φ3.5MM, 4-POLE STEREO EARPHONE(LCH/RCH/GND/MIC) PROVIDED THAT THEY CONFORM TO JIS C6560
 - OVAL RING
 - 9-1.Hardness of silicone rubber: 70°
 - 9-2.Horizontal flash 0.10mm max; Longitudinal flash 0.10mm max



Recommended PCB Layout
Tolerance: ±0.1(Top view)

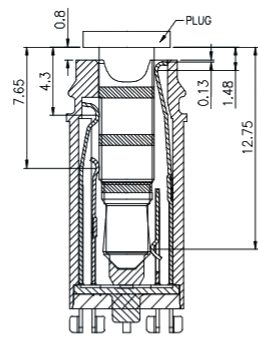
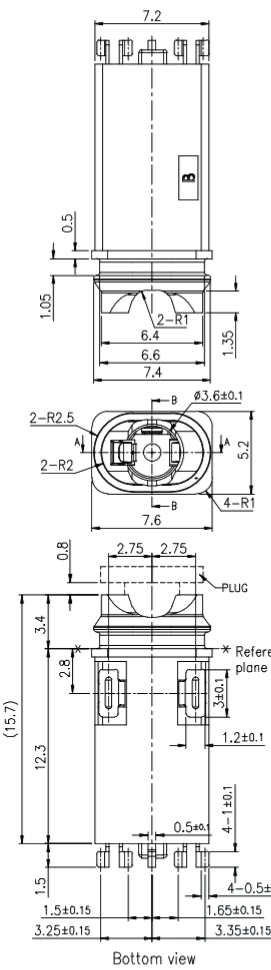
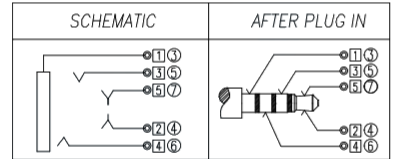


Image of plug match with contact point



Bottom view



□ : TERMINAL NO. ○ : ITEM NO.

⑩	OVAL RING	----	1	SILICONE	BLUE
⑨	BOND	----	1	----	----
⑧	TERMINAL	----	2	C2680 t=0.2	1st:NI(1μm or more),2nd:Sn(MIN 2 μm or more)PLATED
⑦	TIP SPRING-2	⑤	1	Ti-Cu t=0.2	1st:NI(1μm or more),2nd:Sn(MIN 0.03 μm or more)PLATED
⑥	RING SPRING-2	④	1	Ti-Cu t=0.2	1st:NI(1μm or more),2nd:Sn(MIN 0.03 μm or more)PLATED
⑤	RING SPRING-1	③	1	Ti-Cu t=0.2	1st:NI(1μm or more),2nd:Sn(MIN 0.03 μm or more)PLATED
④	TIP SPRING-1	②	1	Ti-Cu t=0.2	1st:NI(1μm or more),2nd:Sn(MIN 0.03 μm or more)PLATED
③	EARTH SPRING	①	1	Ti-Cu t=0.2	1st:NI(1μm or more),2nd:Sn(MIN 0.03 μm or more)PLATED
②	COVER	----	1	PA9T(BLACK)	UL 94V-0
①	HOUSING	----	1	PA9T(BLACK)	UL 94V-0
ITEM	PART NAME	TERMINAL	QTY	MATERIAL	REMARK

广东科斯达电子科技有限公司
KSDKG Guang dong Keside Electronic Technology Co., Ltd.

PART NAME	3.5MM STEREO JACK	TOLERANCE UNLESS	0.0±0.2	UNIT:
PART NO.		OTHERWISE SPECIFIED:	0.00±0.1 0.000±0.05	

DRAWING:	Lucky	DATE:	2020. 20. 06	SCALE	5: 1
CHECK:	liao Y K	DATE:	2020. 20. 06	MATERIAL	*
APPROVAL:	Abel	DATE:	2020. 20. 06	DWG. no.	A
DRAWING NO.				SHEET	1/1