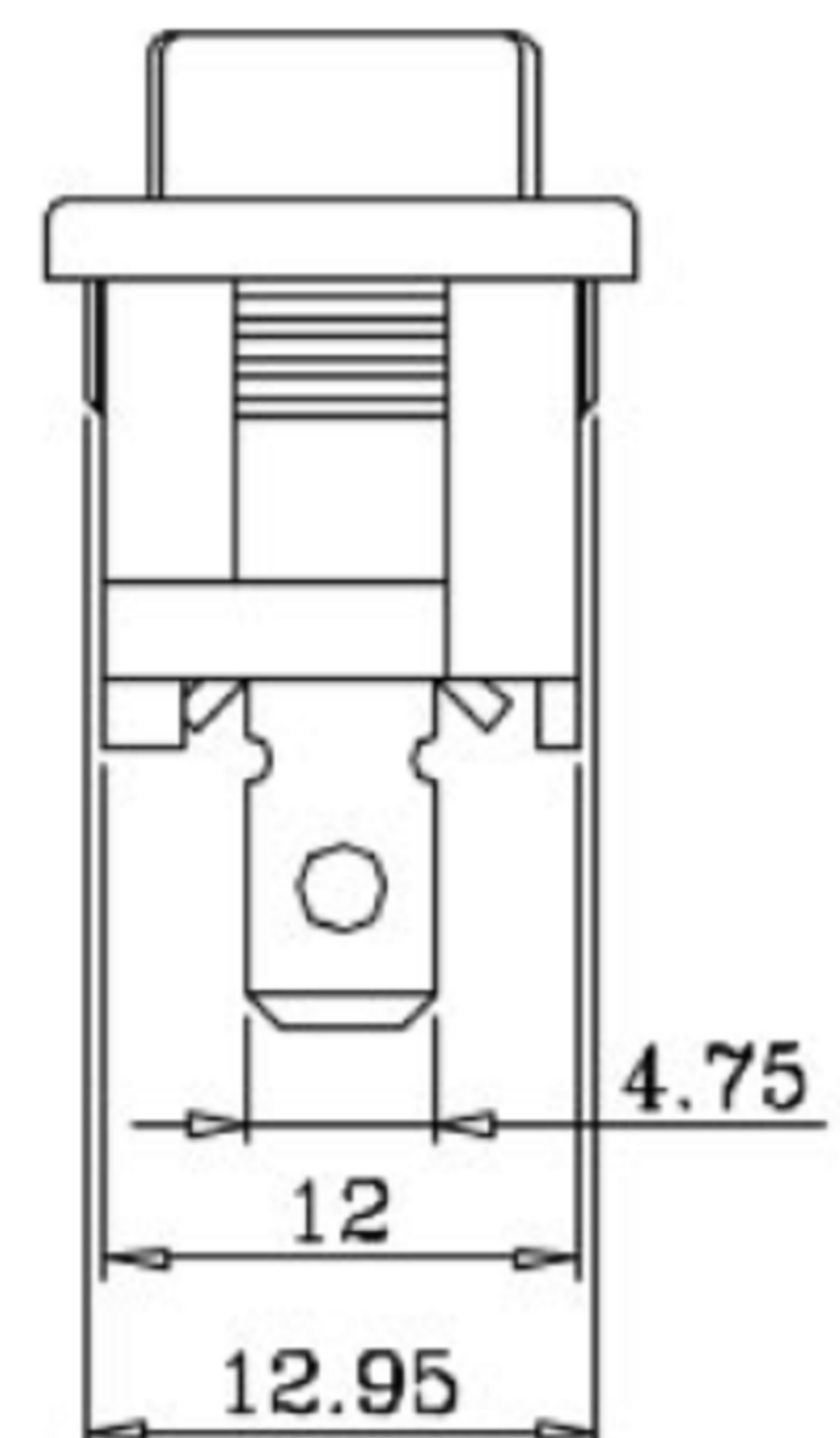
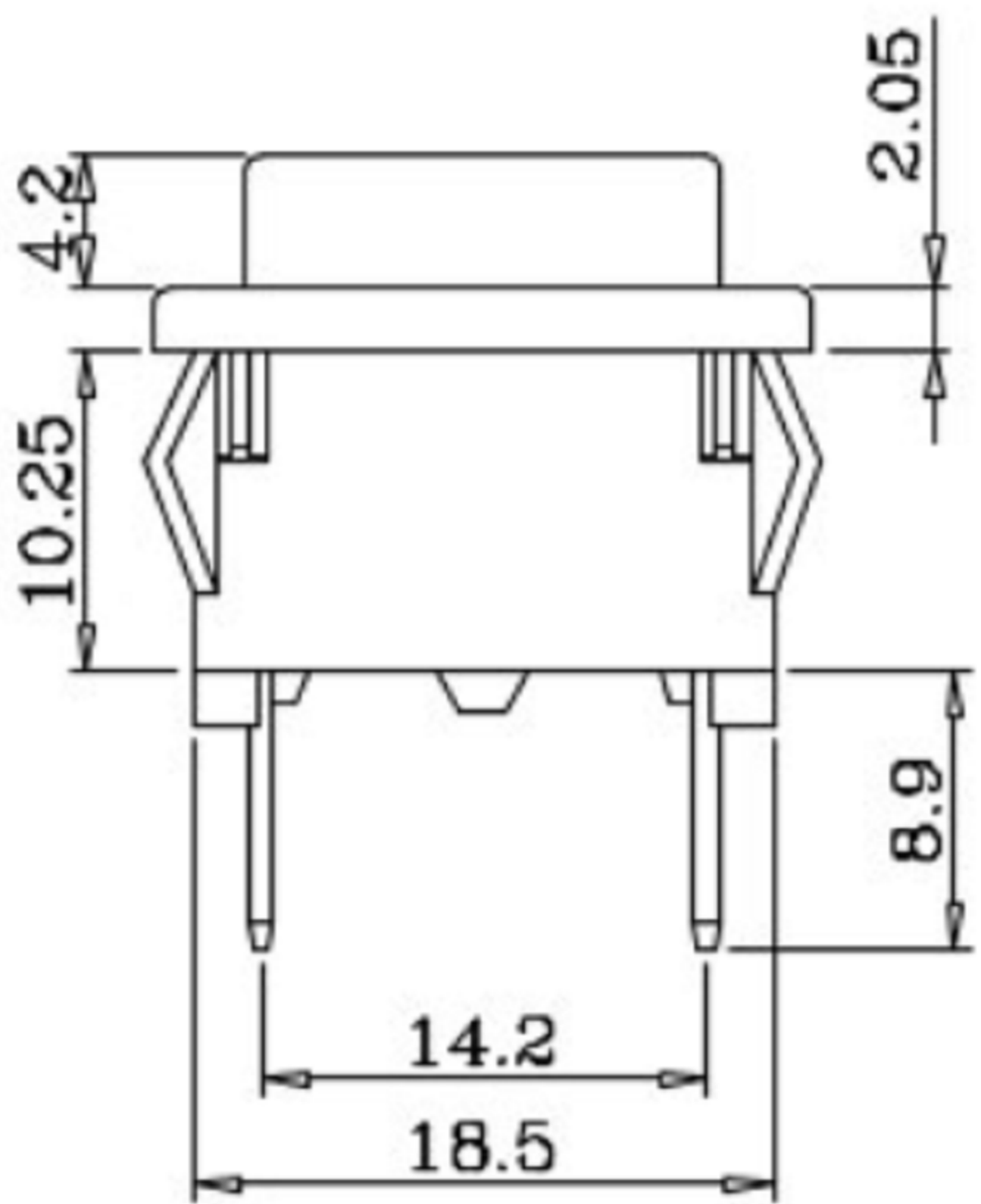
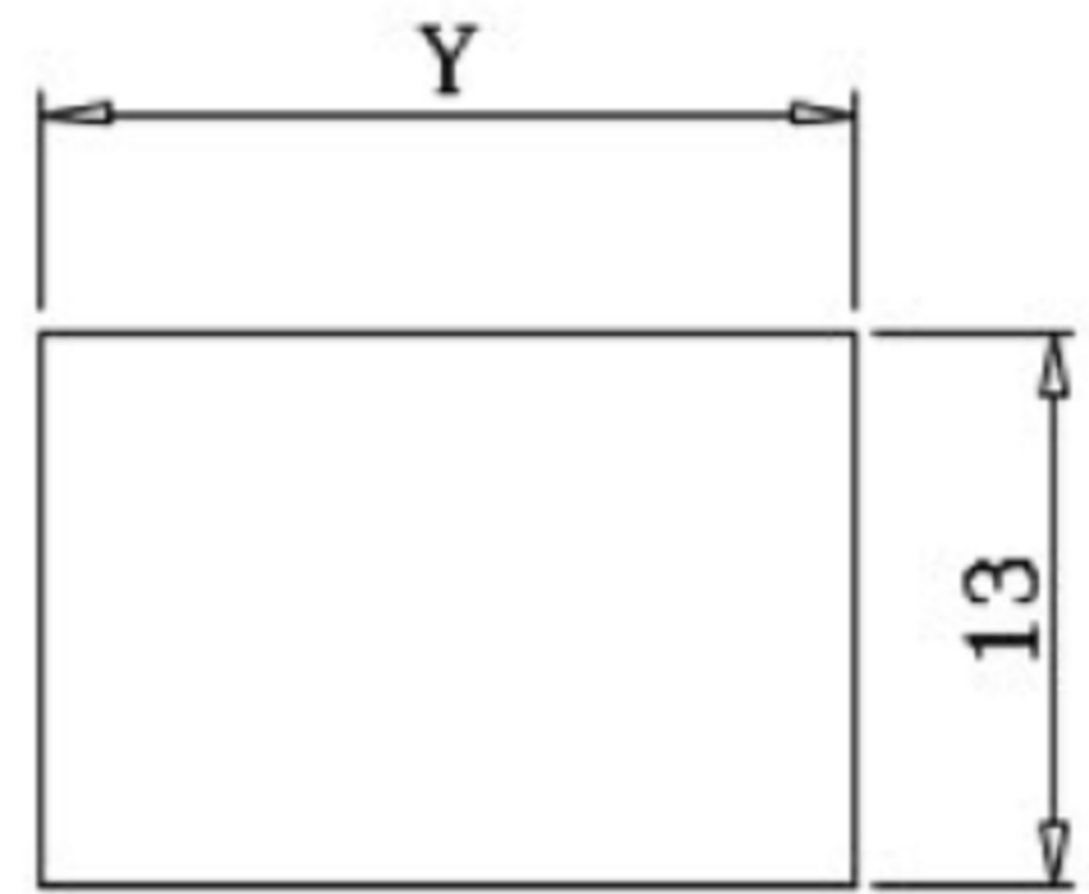


SPECIFICATIONS

- A:(ON)-OFF
- 1.Circuit: SPST B:ON-OFF
 - 2.Rating: 10A 125VAC/6A 250VAC
 - 3.Contact R: 50m ohm (Max.)
 - 4.Insulation R: DC 500V 100M ohm (min.)
 - 5.Dielectric Strength: AC 1500V 1Minute

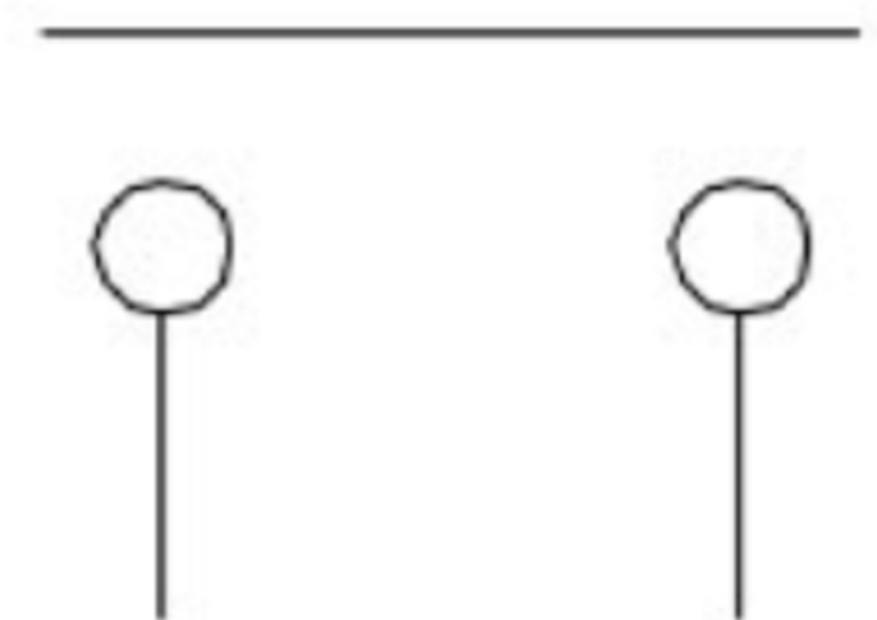


Mount Hole



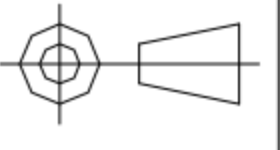
| Panel Thickness | Y |
|-----------------|------|
| 0.75~1.25 | 19.2 |
| 1.25~2.0 | 19.4 |
| 2.0~3.0 | 19.8 |

Circuit Structure




广东科斯达电子科技有限公司
 GUANG DONG KE SI DA ELECTRONIC TECHNOLOGY CO., LTD.

TOLERANCE UNLESS OTHERWISE STATED:
 Up to 5 ±0.2
 Above 5 ~ 15 ±0.3
 Above 15 ~ 30 ±0.4
 Above 30 ~ 50 ±0.5
 Angle ±0.3

3RD. ANGEL'S  UNITS MM

| | | | | |
|--------------|----------|-----------|----------|----------------------|
| DRAWN BY: | DATE | MAT'L | TITLE | SWITCH |
| Jack Lu | 12/27/22 | | | |
| CHECKED BY: | DATE | FINISH | MODLE | TACT SWITCH WITH LED |
| Jacky Chen | 12/27/22 | | | |
| APPROVED BY: | DATE | SCALE | DWG NO. | SIZE |
| Tony Kao | 12/27/22 | 1:1 | | A4 |
| | | SHEET NO. | PART NO. | VER |
| | | 1 of 1 | | R |

| ITEM NO. | DESCRIPTION | DRAWN | DATE |
|----------|-------------|-------|------|
| | | | |