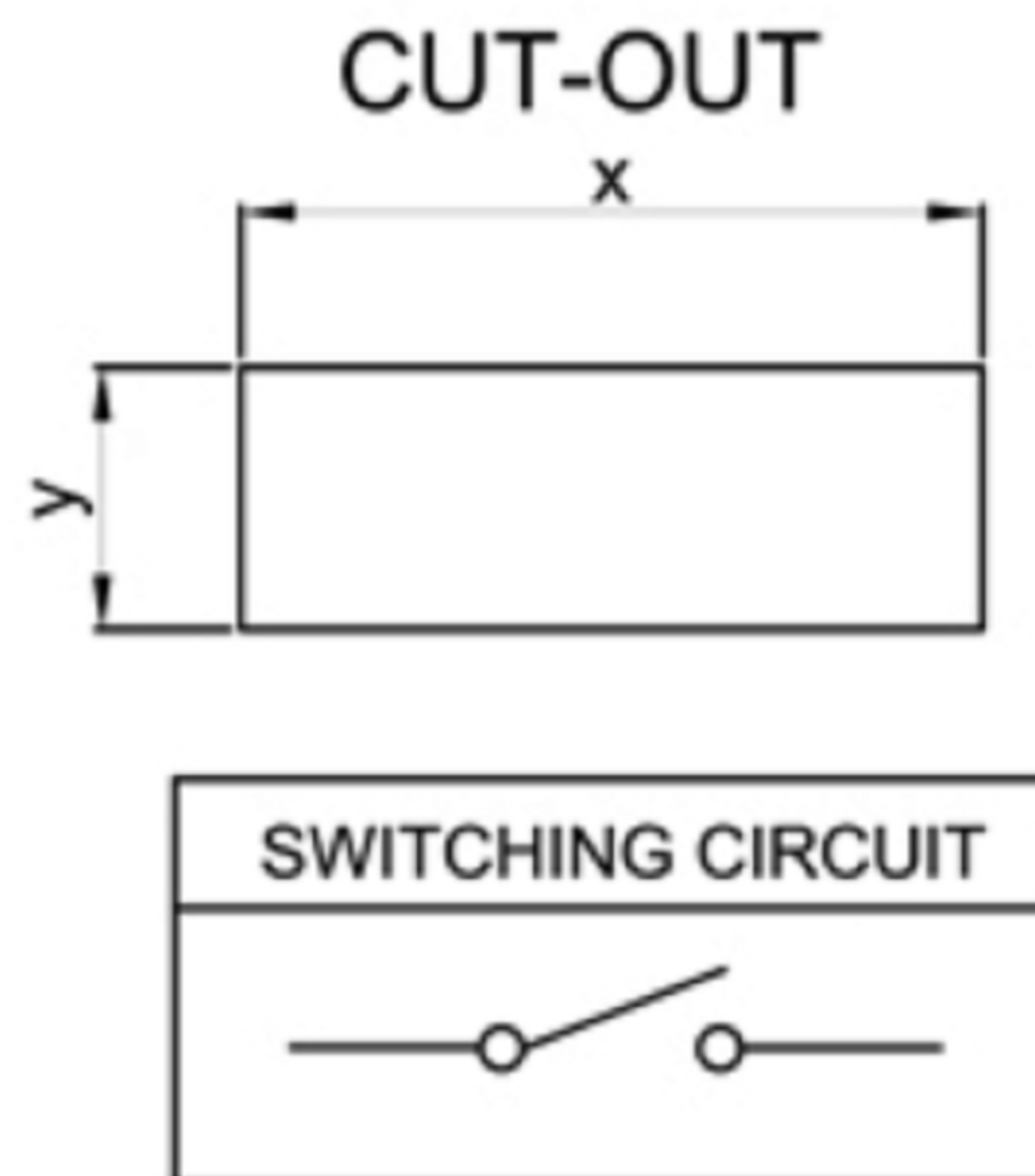
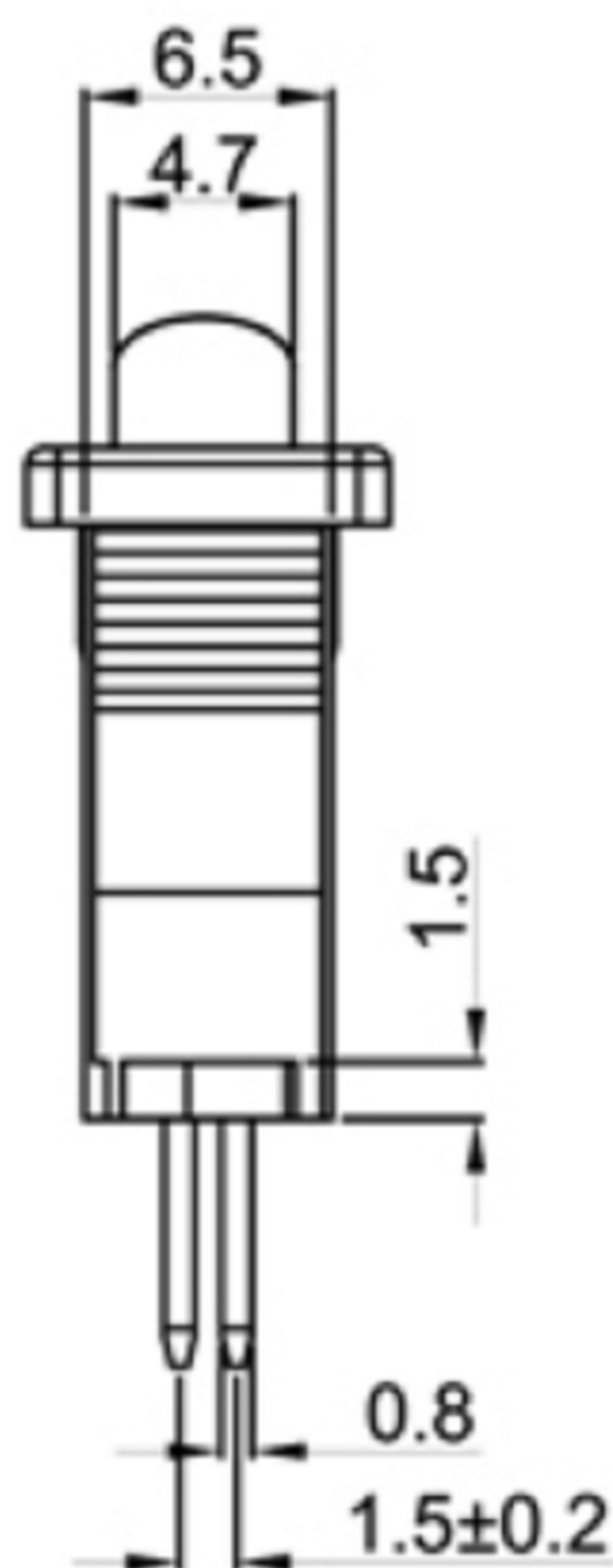
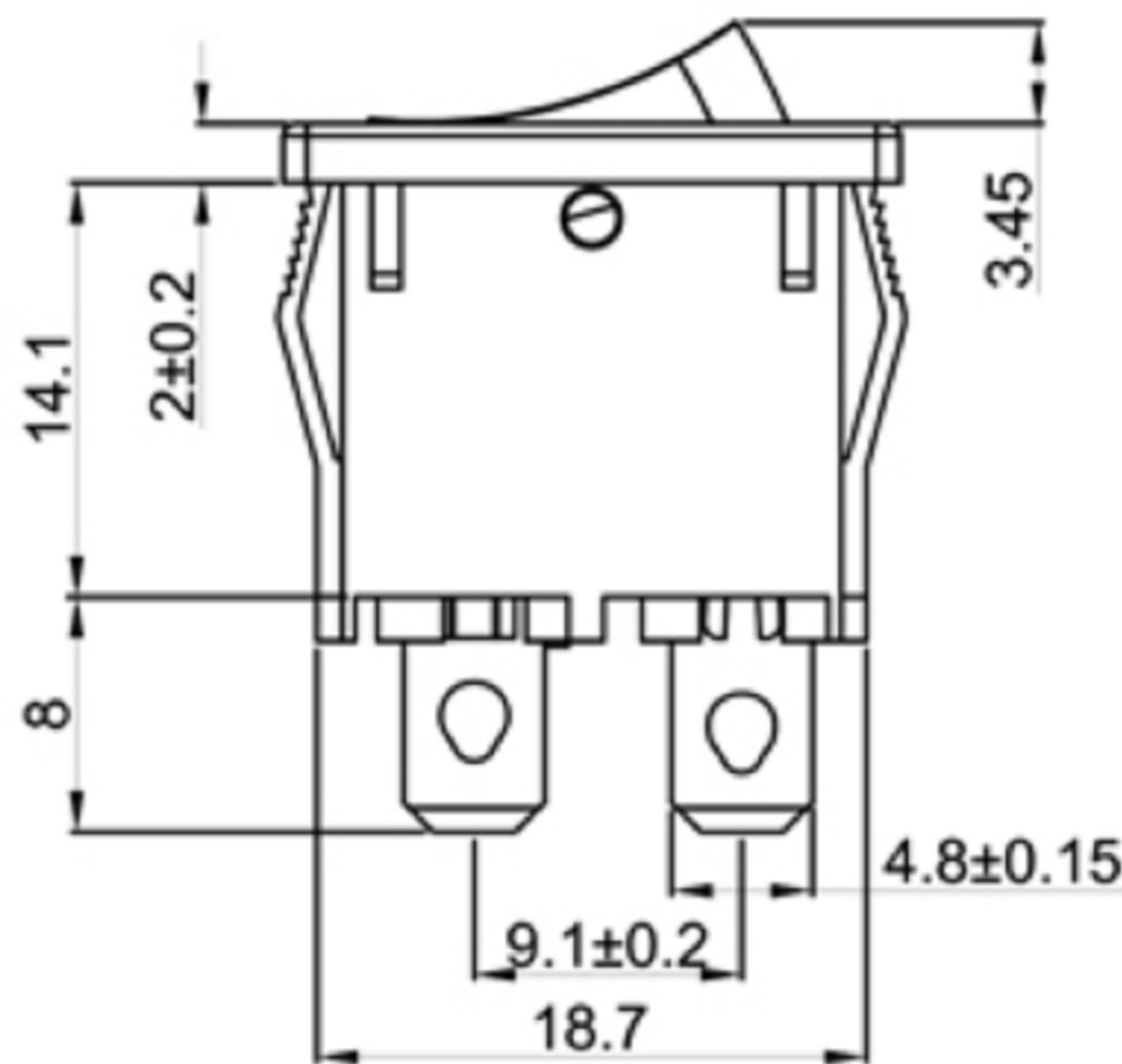


Rating: 12A 125VAC
10A 250VAC(CQC / ENEC/CB)

Contact Resistance: 50mΩ max
Insulation Resistance: DC 500V 100MΩ min.
Dielectric Strength: AC 1500V 1 minute
Operating Force: 300±100gf
Mechanical Life: Over 30,000 cycles
Electrical Life: Over 10,000 cycles
Operating Temperature: 0°C ~ 85°C
Safety Approval:



| | X | Y |
|-----------|----------|---------|
| 0.75~1.25 | 19.2±0.1 | 6.8-0.1 |
| 1.25~2.00 | 19.4±0.1 | 6.8-0.1 |
| 2.00~3.00 | 19.8±0.1 | 6.8-0.1 |

广东科斯达电子科技有限公司
GUANG DONG KE SI DA ELECTRONIC TECHNOLOGY CO., LTD.

TOLERANCE UNLESS OTHERWISE STATED:
Up to 5 ±0.2
Above 5 ~ 15 ±0.3
Above 15 ~ 30 ±0.4
Above 30 ~ 50 ±0.5
Angle ±0.3

3RD. ANGEL'S

UNITS MM

| | | | | |
|--------------|----------|-----------|----------|----------------------|
| DRAWN BY: | DATE | MAT'L | TITLE | SWITCH |
| Jack Lu | 12/27/22 | | | |
| CHECKED BY: | DATE | FINISH | MODLE | TACT SWITCH WITH LED |
| Jacky Chen | 12/27/22 | | | |
| APPROVED BY: | DATE | SCALE | DWG NO. | SIZE |
| Tony Kao | 12/27/22 | 1 : 1 | | A4 |
| | | SHEET NO. | PART NO. | VER |
| | | 1 of 1 | | R |