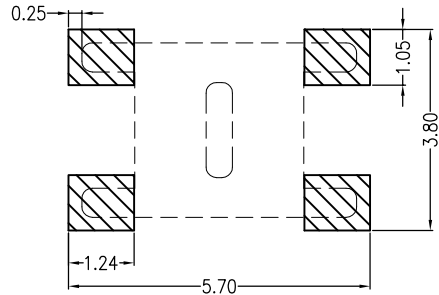
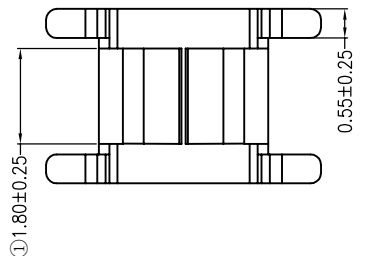
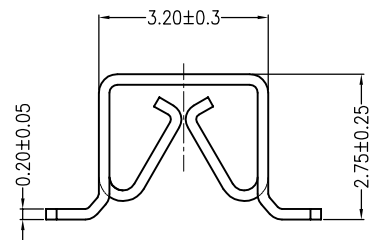
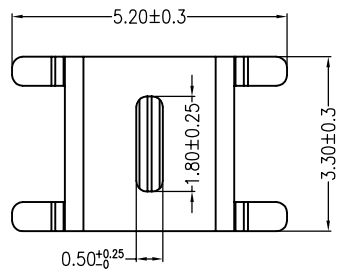
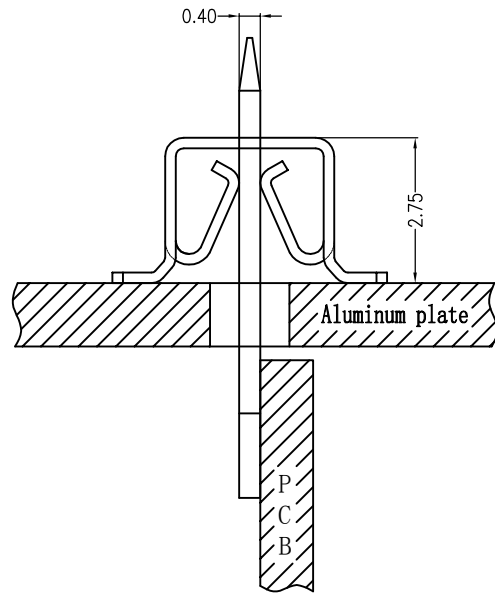


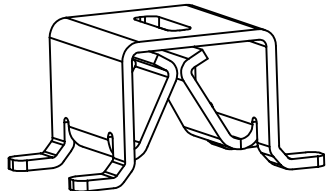
REV	ECN No.	DESCRIPTION	DESIGN	DATE
A	-	NEW RELEASE	李润	2015.03.10



Board Layout



Assembly Layout



主要技术参数 Main Specifications

- 线数 (Poles): 01
- 接触电阻 (Contact resistance): $\leq 20m\Omega$
- 绝缘电阻 (Insulation resistance): $\geq 800M\Omega$
- 额定电压 (Rated voltage): 250 V AC DC
- 额定电流 (Rated current): 1.0A AC DC
- 耐电压 (Withstand Voltage): 1500V AC/minute
- 温度范围 (Temperature Range): $-45^{\circ}C \sim +125^{\circ}C$

ORDER INFORMATION:

L032-01-T2CB-R

PART No.			
No. FOR CIRCUITS:			
01			
PLASTIC MATERIAL:			
T2C=PBR (BEIGE)			
PACKAGING:			
R=REEL			
P=PE			
PLATING:			
B=MATTE Sn			

C				
B				
A	CONTACT	1 PCS	Brass	Ni-plated
ITEM	COMPONENT	Q'TY	MATERIAL	FINISH
广东科斯达电子科技有限公司 GUANG DONG KE SI DA ELECTRONIC TECHNOLOGY CO., LTD.				
.X±0.35	X.±	USE:	CUSTOMER	
.XX±0.25	.X±	APPD:	邵敬和	
.XXX±0.15	.XX±	CHKD:	田峰	
--	--	DR:	蒋建银	
UNITS: mm		SCALE	SHEET	
		1 : 1	1 / 1	

TITLE: -
-
PART NO.: L032-01-T2CB-R
DWG NO.: GCCP-0056

A

B

C

D

E

F

REV	ECN No.	DESCRIPTION	DESIGN	DATE
A	-	NEW RELEASE	蒋建银	2018.01.29

1

1

2

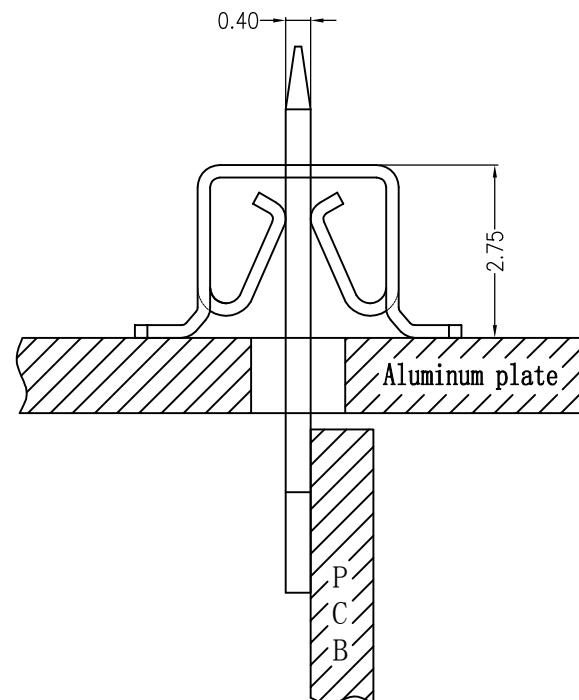
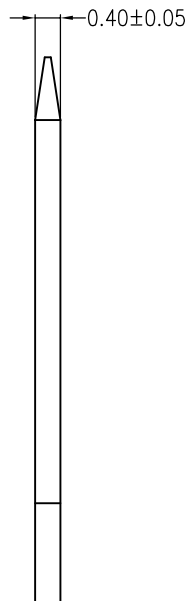
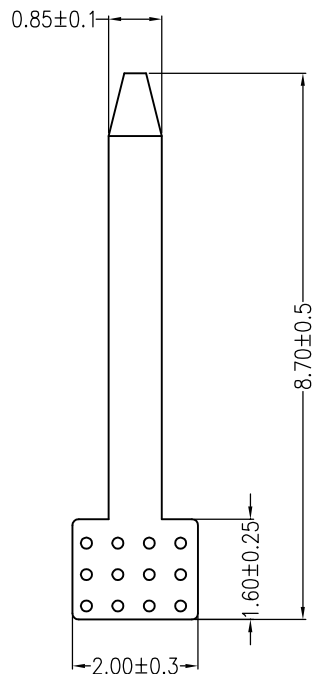
2

3

3

4

4

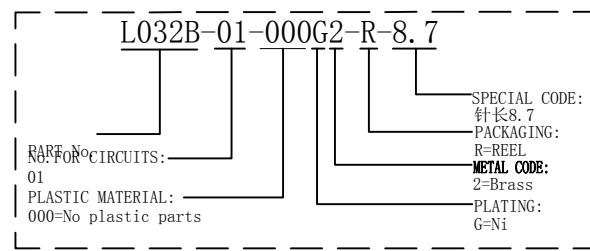


Assembly Layout

主要技术参数 Main Specifications

线数 (Poles): 01
 接触电阻 (Contact resistance): $\leq 20\text{m}\Omega$
 绝缘电阻 (Insulation resistance):
 额定电压 (Rated voltage): 250 V AC DC
 额定电流 (Rated current): 1.0A AC DC
 耐电压 (Withstand Voltage):
 温度范围 (Temperature Range): $-45^{\circ}\text{C} \sim +125^{\circ}\text{C}$

ORDER INFORMATION:



5

ITEM	COMPONENT	Q'TY	MATERIAL	FINISH
C				
B				
A	CONTACT	1 PCS	Brass	Ni-plated
广东科斯达电子科技有限公司 GUANG DONG KE SI DA ELECTRONIC TECHNOLOGY CO., LTD.				
TITLE: L032B-8.7R				
PART NO.: L032B-01-000G2-R-8.7				
DWG NO.: GCCP-0057				
SCALE: 1 : 1				SHEET: 1 / 1
.X±0.35		X.±	USE: CUSTOMER	
.XX±0.25		.X±	APPD: 邵敬和	
.XXX±0.15		.XX±	CHKD: 田峰	
--		--	DR: 蒋建银	
UNITS: mm				

A

B

C

D

E

F