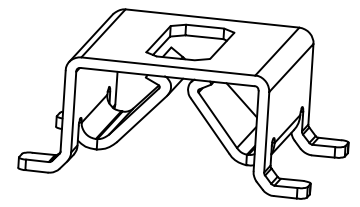
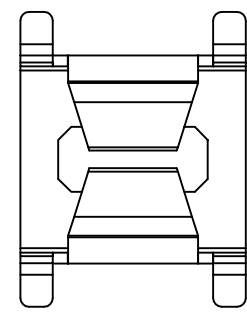
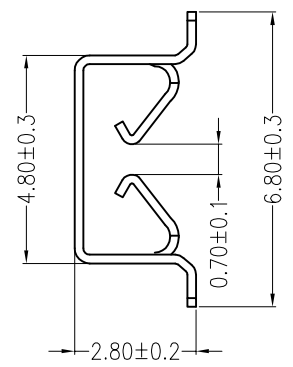
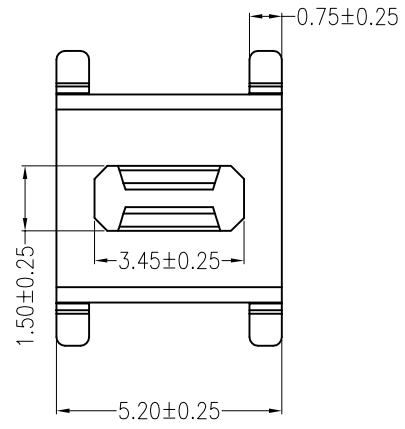
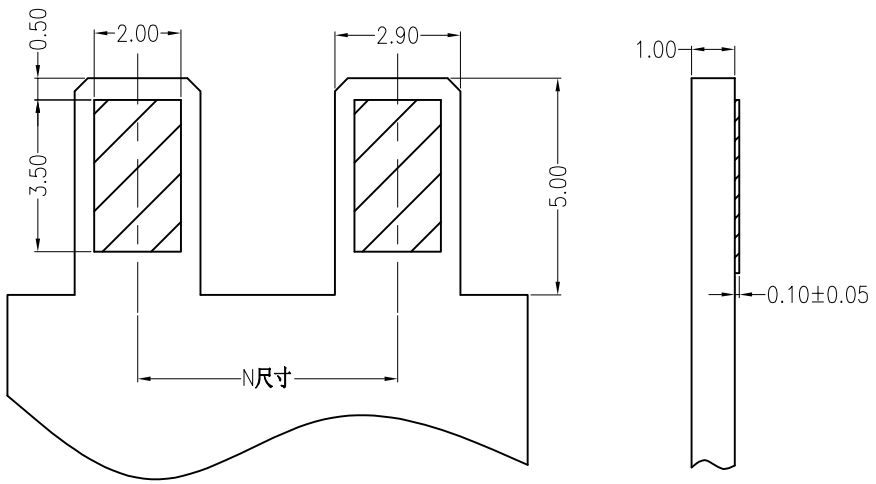


REV	DESCRIPTION	DESIGN	DATE
A0	Release	吴丹平	2016.04.30

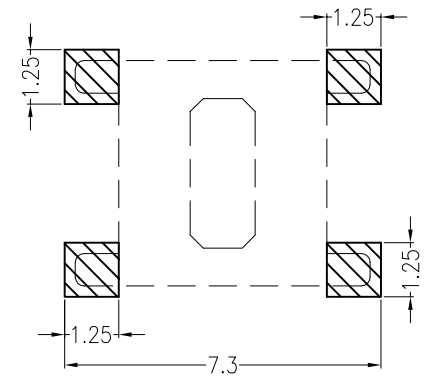


**主要技术参数 Main Specifications**

板 厚 (thickness): 1.0mm  
 接触电阻 (Contact resistance):  $\leq 20m\Omega$   
 绝缘电阻 (Insulation resistance):  $\geq 800M\Omega$   
 额定电压 (Rated voltage): 250 V AC DC  
 额定电流 (Rated current): 1.0A AC DC  
 耐 电压 (Withstand Voltage): 1500V AC/minute  
 温度范围 (Temperature Range):  $-45^{\circ}C \sim +125^{\circ}C$



Mating PCB detail



Board Layout

**ORDER INFORMATION:**

**L031-1.0-T2CB-R**

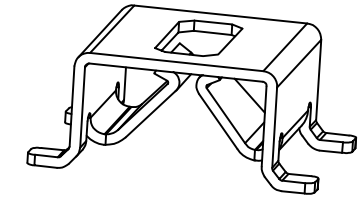
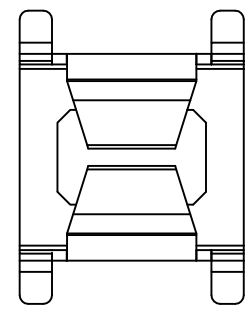
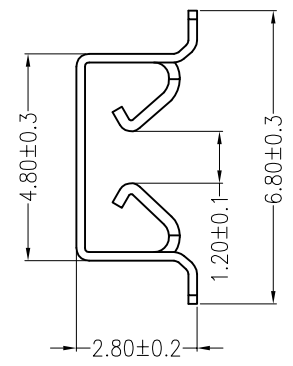
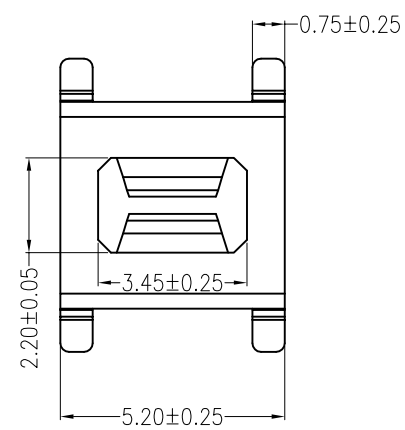
PART No.		PACKAGING:
No. FOR PCB:		R=REEL
1.0mm		P=PE
PLASTIC MATERIAL:		PLATING:
T2C=PBR (BEIGE)		B=MATTE Sn

ITEM	COMPONENT	Q'TY	MATERIAL	FINISH
C				
B				
A	CONTACT	1 PCS	PhosphorBronze	MATTE Sn-plated

<b>广东科斯达电子科技有限公司</b> GUANG DONG KE SI DA ELECTRONIC TECHNOLOGY CO., LTD.		TITLE: -	
X.±0.5	X.±5'	USE:	PART NO.:
.X±0.3	.X±2'	CUSTOMER	L031-1.0-T2CB-R
.XX±0.25	.XX±1'	APPD: 邵敬和	DWG NO.:
--	--	CHKD: 田峰	GCCP-0055
	UNITS: mm	DR: 蒋建银	SCALE: 1 : 1
			SHEET: 1 / 1

REV	ECN No.	DESCRIPTION	DESIGN	DATE
A0		Release	李润	2016.04.19



**主要技术参数 Main Specifications**

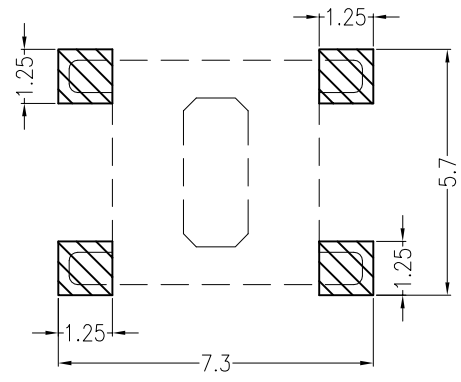
板 厚 (thickness): 1.6mm  
 接触电阻 (Contact resistance):  $\leq 20m\Omega$   
 绝缘电阻 (Insulation resistance):  
 额定电压 (Rated voltage): 250 V AC DC  
 额定电流 (Rated current): 1.0A AC DC  
 耐 电 压 (Withstand Voltage):  
 温度范围 (Temperature Range):

**ORDER INFORMATION:**

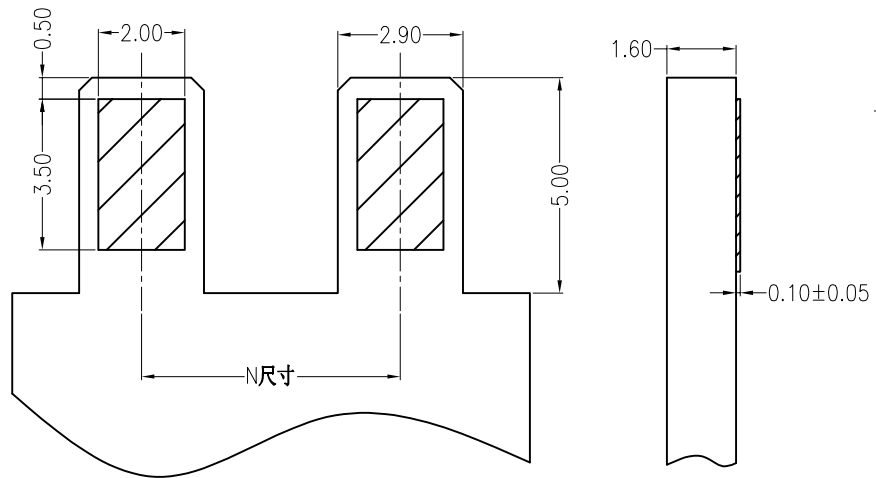
**L031-1.6-01-T2CB-R**

PART No. \_\_\_\_\_  
 No. FOR PCB: \_\_\_\_\_  
 1.6mm  
 No. FOR CIRCUITS: \_\_\_\_\_  
 01

PACKAGING:  
 R=REEL  
 P=PE  
 PLATING:  
 B=MATTE Sn  
 PLASTIC MATERIAL:  
 T2C=PBR (BEIGE)



**Board Layout**



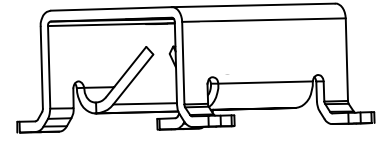
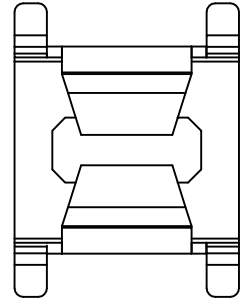
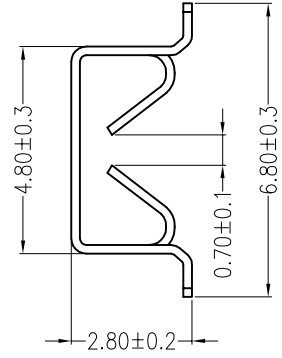
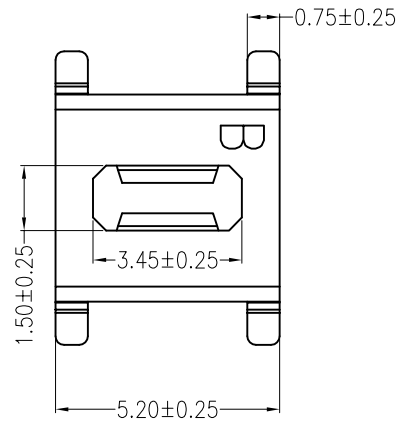
**Mating PCB detail**

ITEM	COMPONENT	Q'TY	MATERIAL	FINISH
C				
B				
A	CONTACT	1 PCS	PHOSPHORBRONZE	MATTE Sn-plated

<b>广东科斯达电子科技有限公司</b> GUANG DONG KE SI DA ELECTRONIC TECHNOLOGY CO., LTD.		TITLE: --	
X.±0.5	X.±5'	USE:	PART NO.:
.X±0.3	.X±2'	CUSTOMER	L031-1.6-01-T2CB-R
.XX±0.25	.XX±1'	APPD: 邵敬和	DWG NO.:
--	--	CHKD: 田峰	GCCP-0229
⊕	UNITS: mm	DR: 吴丹平	SCALE
			1 : 1
			SHEET
			1 / 1

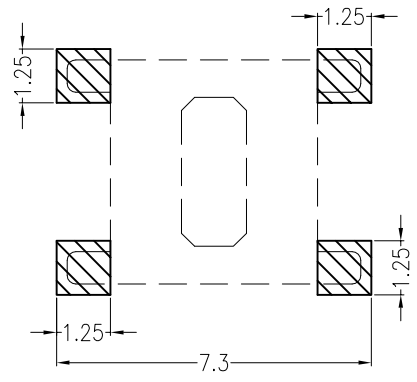
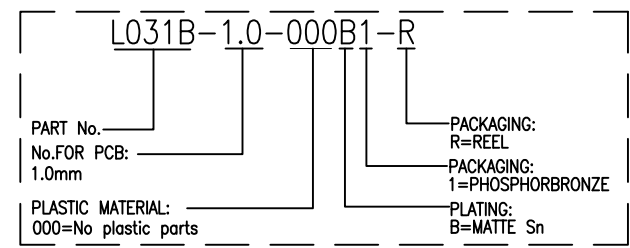
REV	ECN No.	DESCRIPTION	DESIGN	DATE
A0		Release	吴丹平	2017.08.12



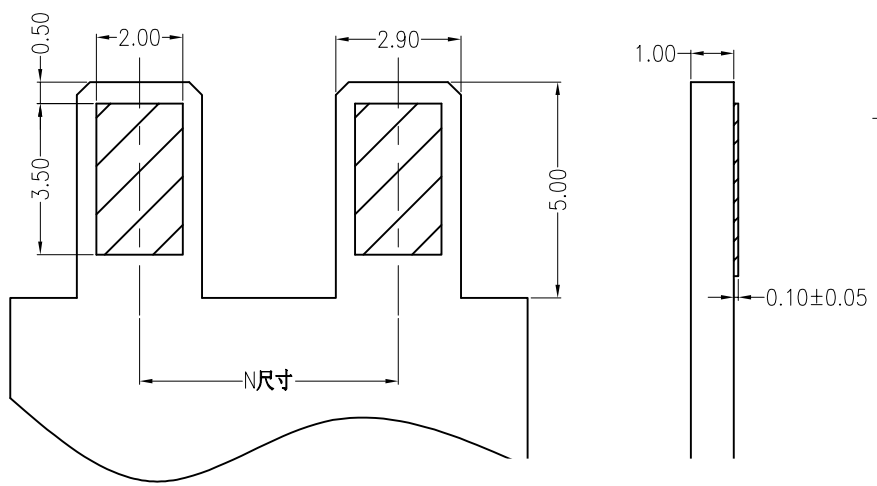
**主要技术参数 Main Specifications**

板厚 (thickness): 1.0mm  
 接触电阻 (Contact resistance):  $\leq 20m\Omega$   
 额定电压 (Rated voltage): 250 V AC DC  
 额定电流 (Rated current): 1.0A AC DC  
 温度范围 (Temperature Range):  $-45^{\circ}C \sim +125^{\circ}C$

**ORDER INFORMATION:**



**Board Layout**



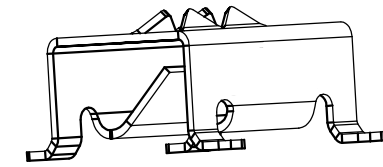
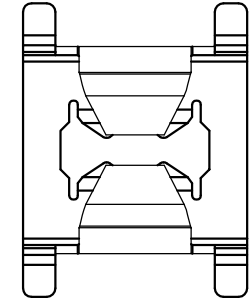
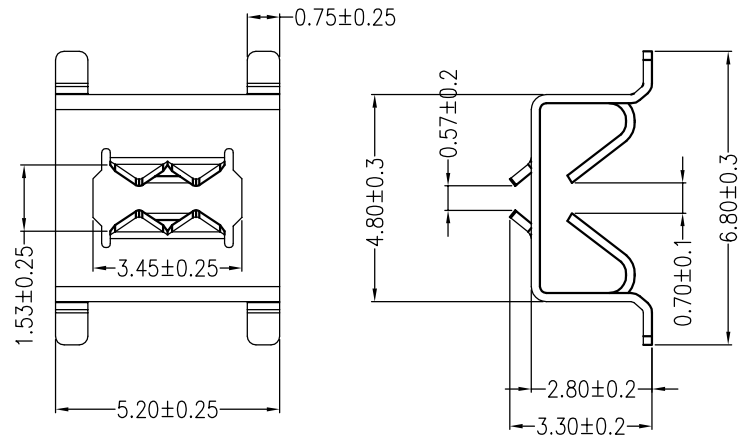
**Mating PCB detail**

ITEM	COMPONEN	Q'TY	MATERIAL	FINISH
A	CONTACT	1 PCS	PHOSPHORBRONZE	MATTE Sn-plated

<b>广东科斯达电子科技有限公司</b> GUANG DONG KE SI DA ELECTRONIC TECHNOLOGY CO., LTD.		TITLE: --	
X.±0.5	X.±5'	USE: CUSTOMER	PART NO.:
.X±0.3	.X±2'	APPD: 邵敬和	L031B-1.0-000B1-R
.XX±0.25	.XX±1'	CHKD: 田峰	DWG NO.:
--	--	DR: 吴丹平	GCCP-1022
⊕	UNITS: mm	SCALE	SHEET
		1 : 1	1 / 1

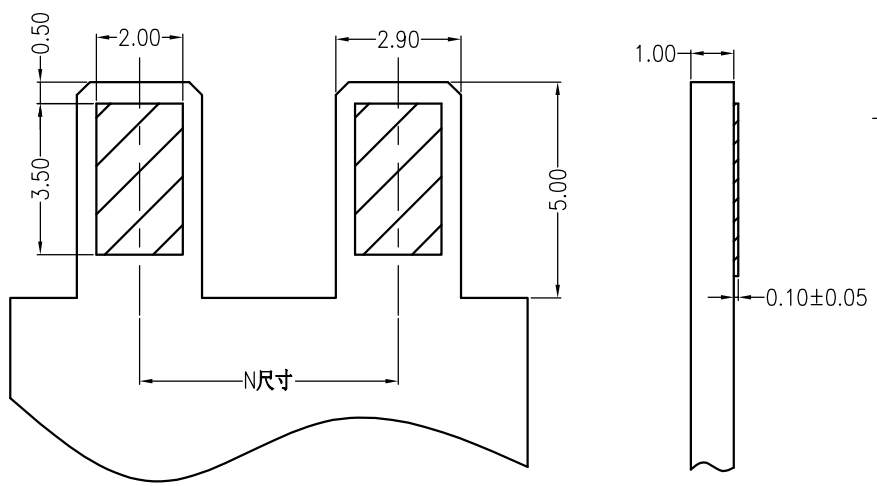
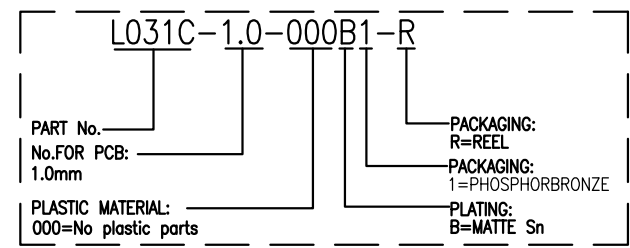
REV	ECN No.	DESCRIPTION	DESIGN	DATE
A0		Release	曾令青	2018.08.24



**主要技术参数 Main Specifications**

板厚 (thickness): 1.0mm  
 接触电阻 (Contact resistance):  $\leq 20m\Omega$   
 额定电压 (Rated voltage): 250 V AC DC  
 额定电流 (Rated current): 1.0A AC DC  
 温度范围 (Temperature Range):  $-45^{\circ}C \sim +125^{\circ}C$

**ORDER INFORMATION:**



**Mating PCB detail**

**Board Layout**

ITEM	COMPONENT	Q'TY	MATERIAL	FINISH
A	CONTACT	1 PCS	PHOSPHORBRONZE	MATTE Sn-plated

<b>广东科斯达电子科技有限公司</b> GUANG DONG KE SI DA ELECTRONIC TECHNOLOGY CO., LTD.		TITLE: -	
X.±0.5	X.±5'	USE: CUSTOMEP	PART NO.:
.X±0.3	.X±2'	APPD: 邵敬和	L031C-1.0-000B1-R
.XX±0.25	.XX±1'	CHKD: 田峰	DWG NO.:
--	--	DR: 曾令青	GCCP-1226
UNITS: mm		SCALE	SHEET
		1 : 1	1 / 1