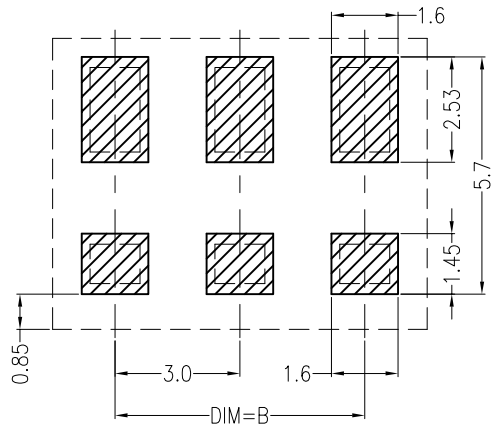
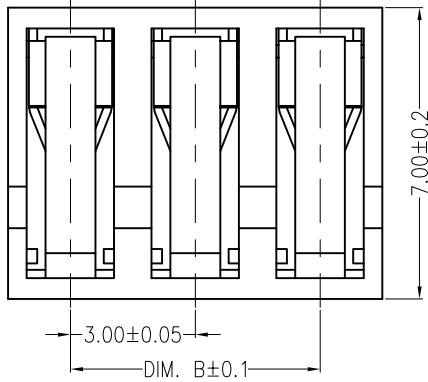
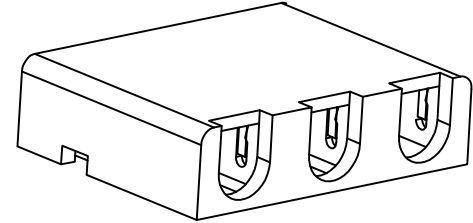
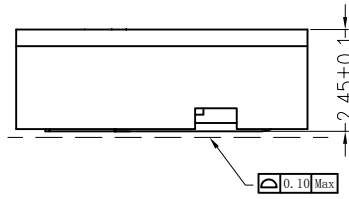
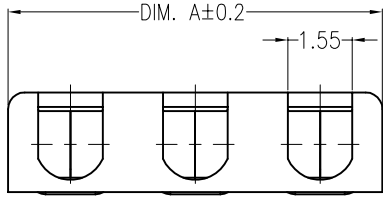


REV	DESCRIPTION	DESIGN	DATE
A0	Release	吴丹平	2016.04.30

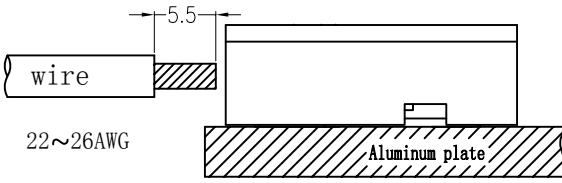
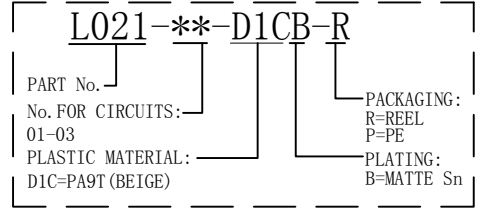


Board Layout

主要技术参数 Main Specifications

- 线数 (Poles): 01 to 03
- 接触电阻 (Contact resistance):  $\leq 20m\Omega$
- 绝缘电阻 (Insulation resistance):  $\geq 800M\Omega$
- 额定电压 (Rated voltage): 250 V AC DC
- 额定电流 (Rated current): 2.0A AC DC
- 耐电压 (Withstand Voltage): 1500V AC/minute
- 温度范围 (Temperature Range):  $-40^{\circ}C \sim +110^{\circ}C$

ORDER INFORMATION:



Assembly Layout

名称	尺寸	DIM. A	DIM. B	备注
L021-01		3.00		
L021-02		6.00	3.00	
L021-03		9.00	6.00	

ITEM	COMPONENT	Q'TY	MATERIAL	FINISH
C				
B	CONTACT	1~3 PCS	PhosphorBronze	MATTE Sn-plated
A	PEDESTAL	1 PCS	PA9T	UL 94V-0, COLOR:BEIGE

<p>广东科斯达电子科技有限公司 GUANG DONG KE SI DA ELECTRONIC TECHNOLOGY CO., LTD.</p>	TITLE: -
	3.0mmPITCH 180*WAFER SMT TYPE
	PART NO.: L021-**-D1CB-R
	DWG NO.: GCCP-0040
<p>X.±0.5 X.±5° USE: CUSTOMER</p> <p>.X±0.3 .X±2° APPD: 邵敬和</p> <p>.XX±0.25 .XX±1° CHKD: 田峰</p> <p>--- --- DR: 蒋建银</p>	SCALE 1 : 1
<p>UNITS: mm</p>	SHEET 1 / 1

A

B

C

D

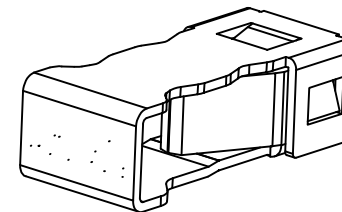
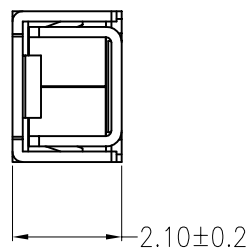
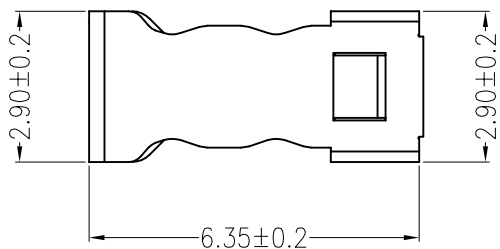
E

F

REV	DESCRIPTION	DESIGN	DATE
A0	Release	吴丹平	2016.04.30

1

1

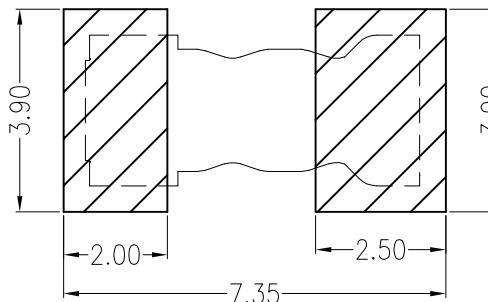
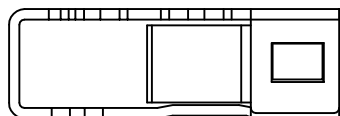


2

2

3

3



### 主要技术参数 Main Specifications

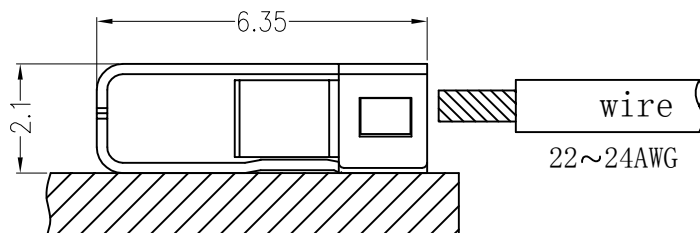
线数 (Poles): 01  
 接触电阻 (Contact resistance):  $\leq 20m\Omega$   
 绝缘电阻 (Insulation resistance):  $\geq 800M\Omega$   
 额定电压 (Rated voltage): 250 V AC DC  
 额定电流 (Rated current): 2.0A AC DC  
 耐电压 (Withstand Voltage): 1500V AC/minute  
 温度范围 (Temperature Range):  $-45^{\circ}C \sim +125^{\circ}C$

### ORDER INFORMATION:

<b>L024-01-T2CB-R</b>			
PART No.			
No. FOR CIRCUITS:			PACKAGING: R=REEL P=PE
PLASTIC MATERIAL:			PLATING: B=MATTE Sn
T2C=PBR (BEIGE)			

4

4



Assembly Layout

5

5

C					
B					
A	CONTACT	1 PCS	PhosphorBronze	MATTE Sn-plated	
ITEM	COMPONENT	Q'TY	MATERIAL	FINISH	
<b>广东科斯达电子科技有限公司</b> GUANG DONG KE SI DA ELECTRONIC TECHNOLOGY CO., LTD.					TITLE: -
X.±0.5	X.±5'	USE:	CUSTOMER		PART NO.:
.X±0.3	.X±2'	APPD:	邵敬和		L024-01-T2CB-R
.XX±0.25	.XX±1'	CHKD:	田峰		DWG NO.:
--	--	DR:	周秀龙		GCCP-0045
		UNITS:	mm		SCALE
					SHEET
					1 : 1
					1 / 1

A

B

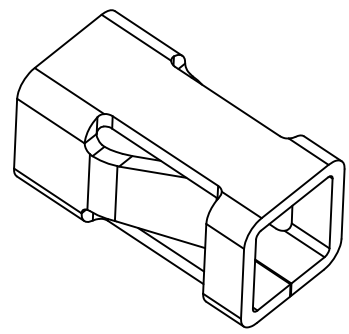
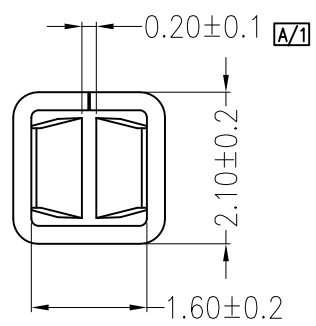
C

D

E

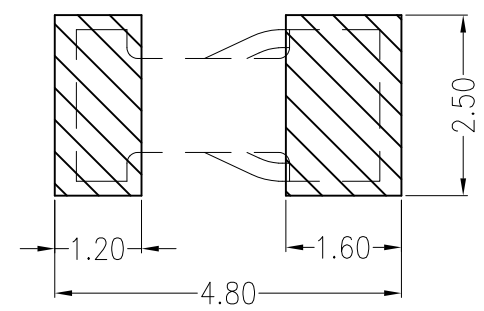
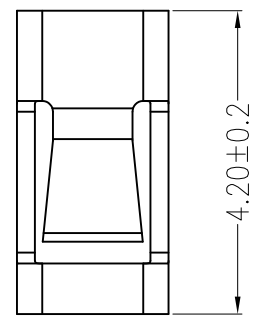
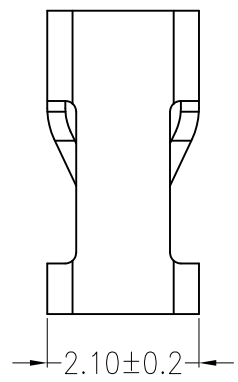
F

REV	DESCRIPTION	DESIGN	DATE
A0	Release	吴丹平	2016.04.30
A/1	增加管控开口尺寸	曾令青	2018.08.22



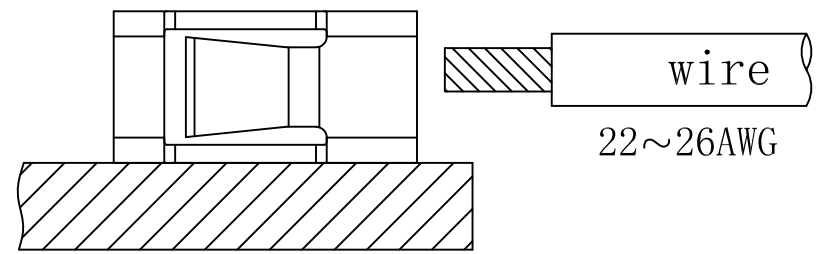
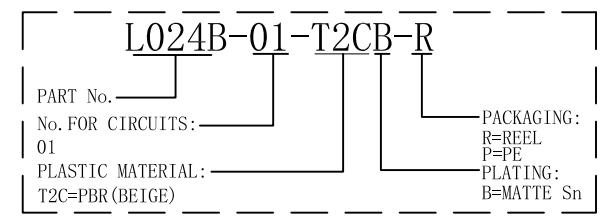
主要技术参数 Main Specifications

线数 (Poles): 01  
 接触电阻 (Contact resistance):  $\leq 20m\Omega$   
 绝缘电阻 (Insulation resistance):  
 额定电压 (Rated voltage): 250 V AC DC  
 额定电流 (Rated current): 2.0A AC DC  
 耐电压 (Withstand Voltage):  
 温度范围 (Temperature Range):





Board Layout

ORDER INFORMATION:



Assembly Layout

C				
B				
A	CONTACT	1 PCS	PhosphorBronze	MATTE Sn-plated
ITEM	COMPONENT	Q'TY	MATERIAL	FINISH
 <b>广东科斯达电子科技有限公司</b> GUANG DONG KE SI DA ELECTRONIC TECHNOLOGY CO., LTD.		TITLE: -		
X.±0.5	X.±5'	USE:	PART NO.:	
.X±0.3	.X±2'	APPD:	L024B-01-T2CB-R	
.XX±0.25	.XX±1'	CHKD:	DWG NO.:	
--	--	DR:	GCCP-0301	
	UNITS: mm	DR: 蒋建银	SCALE	SHEET
			1 : 1	1 / 1