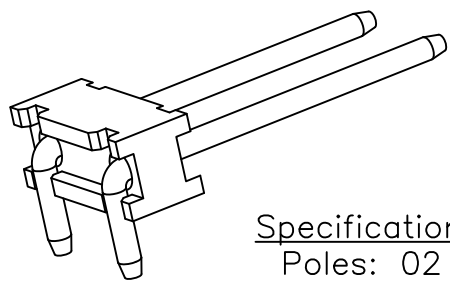
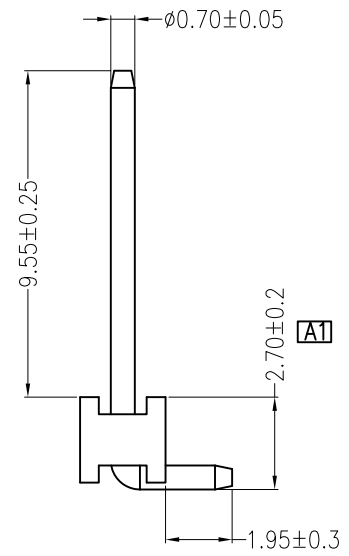
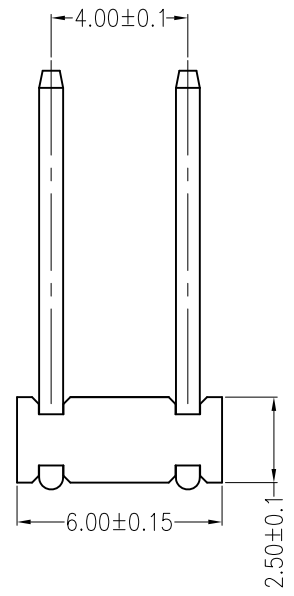
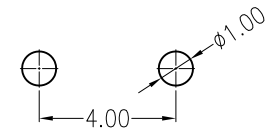
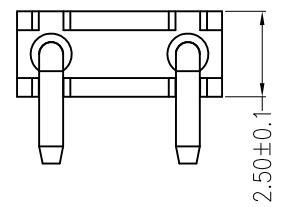


REV	DESCRIPTION	DESIGN	DATE
A0	NEW RELEASE	吴丹平	2015/10/23
A1	按当前机台可管控精度更改公差	Jiangjanyin	2019/08/17



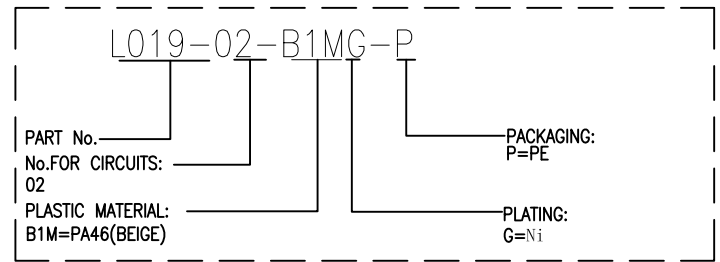
Specifications:

- Poles: 02
- Contact resistance: $\leq 20m\Omega$
- Insulation resistance: $\geq 1000M\Omega$
- Rated voltage: 250V AC DC
- Rated current: 2.0A AC DC
- Withstand Voltage: 2000V AC/minute
- Temperature Range: $-40^{\circ}C \sim +110^{\circ}C$
- Housing: PA46 UL94V-0, Natural (Beige)
- Contacts: Brass/Ni-plated



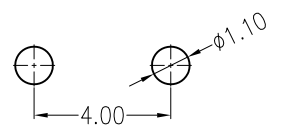
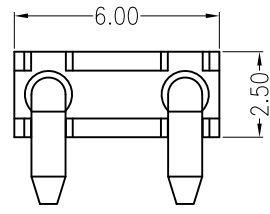
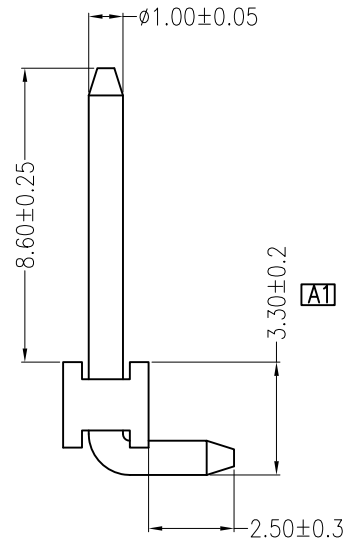
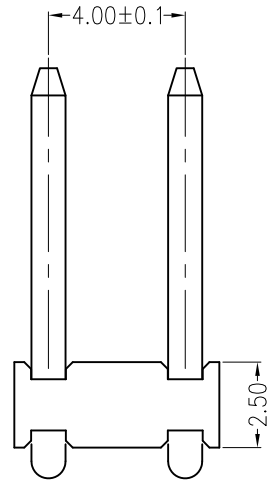
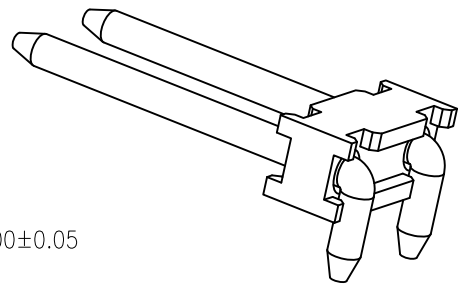
SUGGESTED PCB LAYOUT
(COMPONENT SIDE)

ORDER INFORMATION:



广东科斯达电子科技有限公司 GUANG DONG KE SI DA ELECTRONIC TECHNOLOGY CO., LTD.		TITLE: -	
GENERAL TOLERANCE X. ± 0.50 X. $\pm 5^{\circ}$ X.X ± 0.30 X.X $\pm 2^{\circ}$ X.XX ± 0.20 X.XX $\pm 1^{\circ}$		USE: CUSTOMER APPD: Liuzhenling CHKD: Wangliang DR: Jiangjanyin	PART NO.: L019-02-B1MG-P DWG NO.: GCKH-0036 SCALE: 1 : 1 SHEET: 1 / 1
UNITS: mm			

REV	DESCRIPTION	DESIGN	DATE
A0	NEW RELEASE	李润	2016/03/28
A1	按当前机台可管控精度更改公差	Jiangjanyin	2019/08/17

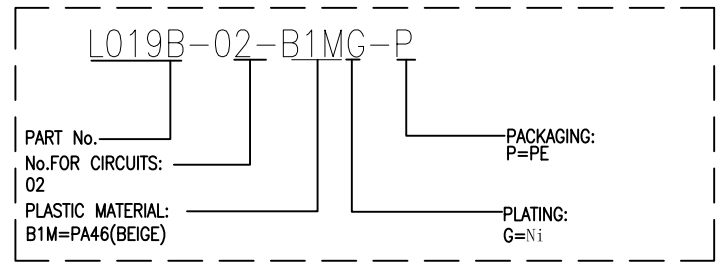


SUGGESTED PCB LAYOUT
(COMPONENT SIDE)

Specifications:

- Poles: 02
- Contact resistance: ≤20mΩ
- Insulation resistance: ≥1000MΩ
- Rated voltage: 250V AC DC
- Rated current: 2.0A AC DC
- Withstand Voltage: 2000V AC/minute
- Temperature Range: -40°C ~ +110°C
- Housing: PA46 UL94V-0, Natural (Beige)
- Contacts: Brass/Ni-plated

ORDER INFORMATION:



广东科斯达电子科技有限公司 GUANG DONG KE SI DA ELECTRONIC TECHNOLOGY CO., LTD.		TITLE: -	
GENERAL TOLERANCE		USE: CUSTOMER	PART NO.: L019B-02-B1MG-P
X. ±0.50	X. ±5°	APPD: Liuzhenling	DWG NO.: GCKH-0255
X.X ±0.30	X.X ±2°	CHKD: Wangliang	SCALE: 1 : 1
X.XX ±0.20	X.XX ±1°	DR: Jiangjanyin	SHEET: 1 / 1
UNITS: mm			